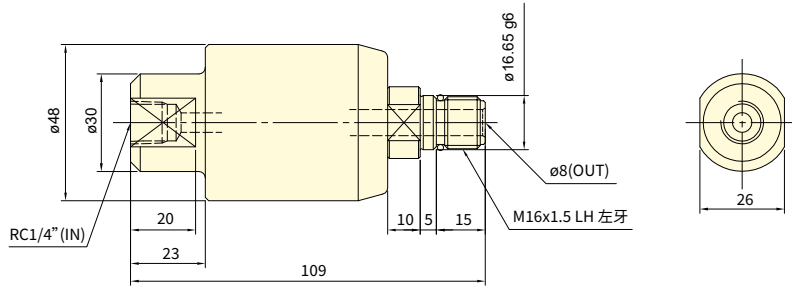




- 單通道多介質設計，兼容氣體與水兩種不同介質。
- 高效密封系統，採用耐磨損且耐腐蝕的密封材料，確保在高速旋轉下無洩漏，結構緊湊，易於安裝。
- Single-channel design for multi-medium transmission, compatible with both air and coolant (water-based fluids).
- High-performance sealing system with wear- and corrosion-resistant sealing materials ensures zero leakage under high-speed rotation.
- Compact construction for easy integration and installation.
- 無介質通過時，請勿運轉。
- Do not operate the rotary joint without medium flowing through the passage.



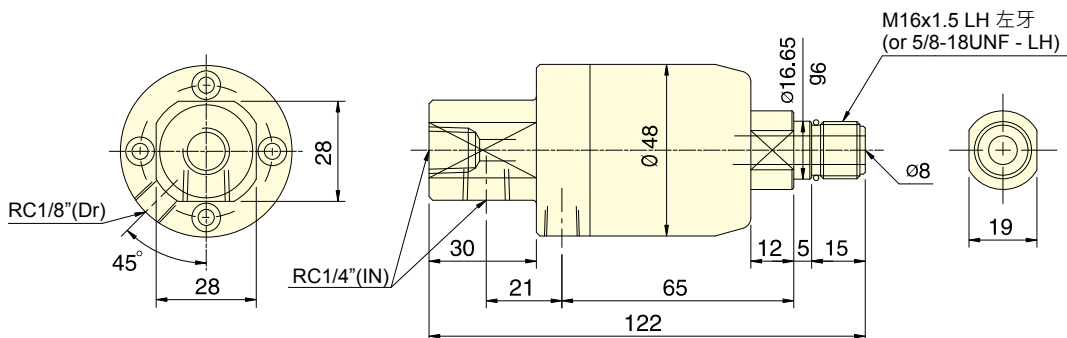
保留規格修改的權利 Subject to technical changes

技術規格 SPECIFICATIONS

型號	注水PV 限制值 (MPa·r/m.)	注氣PV 限制值 (MPa·r/m.)	吐出量 (使用壓力 50 kgf/cm ²)	最高使用迴轉數 (r.p.m.)	注水最高使用壓力 MPa(kgf/cm ²)	注氣最高使用壓力 MPa(kgf/cm ²)	重量(kg)
Model	Coolant connection PV Limit value (MPa·r/m.)	Air connection PV Limit value (MPa·r/m.)	Delivery amount (at 50 kgf/cm ²)	Max. speed (r.p.m.)	Coolant connection Max. pressure MPa(kgf/cm ²)	Air connection Max. pressure MPa(kgf/cm ²)	Weight (kg)
RJ-52	8000	3200	28l/min	3000	4.0(40)	0.8(8.0)	0.5



- 高轉速，高壓力用冷卻液迴轉接頭。
- 內部止水閥使用超硬合金及精密陶瓷相配對，耐磨耗特性佳。
- Coolant joint for high speed, high pressure. Usable for oil and water-soluble coolant.
- Seal bushing inside is made of cemented carbide and ceramics, which provide higher wear-resistance.
- 注水部無流體通過時，請勿運轉。
- The joint should not run without liquid through coolant port.



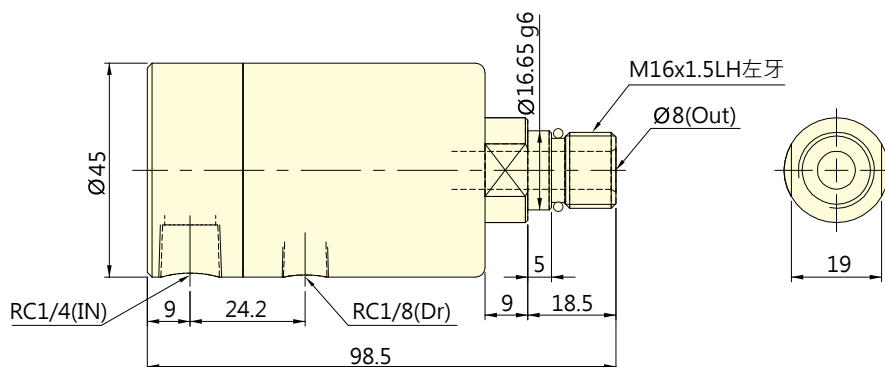
保留規格修改的權利 Subject to technical changes

技術規格 SPECIFICATIONS

型號	PV限制值 MPa·r/m	最高使用壓力 MPa(kgf/cm ²)	吐出量 (使用壓力 50 kgf/cm ²)	最高使用迴轉數(r.p.m.)	重量 (kg)
Model	PV Limit value MPa·r/m	Max. pressure MPa(kgf/cm ²)	Delivery amount (at 50 kgf/cm ²)	Max. speed (r.p.m.)	Weight (kg)
RJ-80	14400	6.0(60)	28 l/min	8000	0.5



- 外型長度精短・重量輕巧。
- 高轉數・高壓力用冷卻液迴轉接頭。
- 內部止水閥使用超硬合金及精密陶瓷相配對・耐磨耗性特佳。
- 運轉時如無流體通過・則止水閥自動脫離・使止水閥不致乾磨而損壞。
- Short form, light weight coolant rotating joint.
- Coolant joint for high speed, high pressure. Usable for oil and water-soluble coolant.
- Seal bushing inside is made of cemented carbide and ceramics, which provide higher wear-resistance.
- The seal will depart automatically if no liquid passes during operation, and will not be damaged due to dry touching.
- 最小啟動壓力 4kgf/cm²。
- Min. pressure is 4kgf/cm².



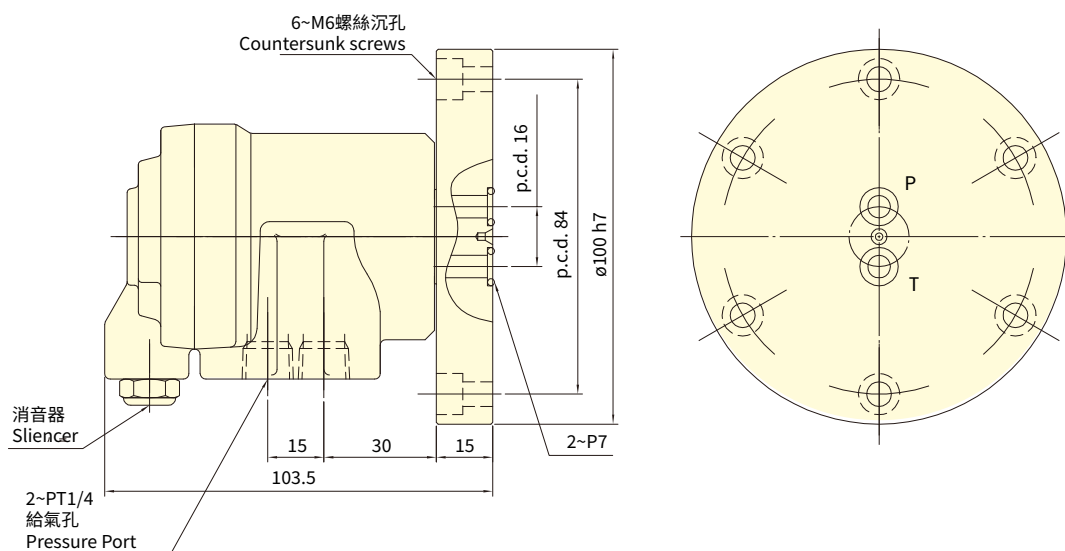
保留規格修改的權利 Subject to technical changes

技術規格 SPECIFICATIONS

型號	PV限制值 MPa·r/m	最高使用壓力 MPa(kgf/cm ²)	吐油量 (使用壓力 50 kgf/cm ²)	最高使用迴轉數 (r.p.m.)	最小啟動壓力 MPa(kgf/cm ²)	重量 (kg)
Model	PV Limit value MPa·r/m	Max. pressure MPa(kgf/cm ²)	Delivery amount (at 50 kgf/cm ²)	Max. speed (r.p.m.)	Min. pressure MPa(kgf/cm ²)	Weight (kg)
RJ-92	17500	7.0(70)	28 l/min	10000	0.4(4)	0.46



- 提供2個壓縮空氣傳輸通道。
 - 將多條氣路整合於單一組件，大幅簡化管路配置並節省安裝空間。
 - 旋轉阻力極小，運轉平穩順暢，有效節省能源。
- Provides 2 independent channels for compressed air transmission.
 - Integrates multiple pneumatic lines into a single component, significantly simplifying piping layout and saving installation space.
 - Minimal rotational resistance ensures smooth and stable operation, effectively saving energy.
- 空壓配置、通道數與安裝介面皆可依需求客製化。
 - The pneumatic configuration, number of passages, and mounting interface can all be customized according to requirements



保留規格修改的權利 Subject to technical changes

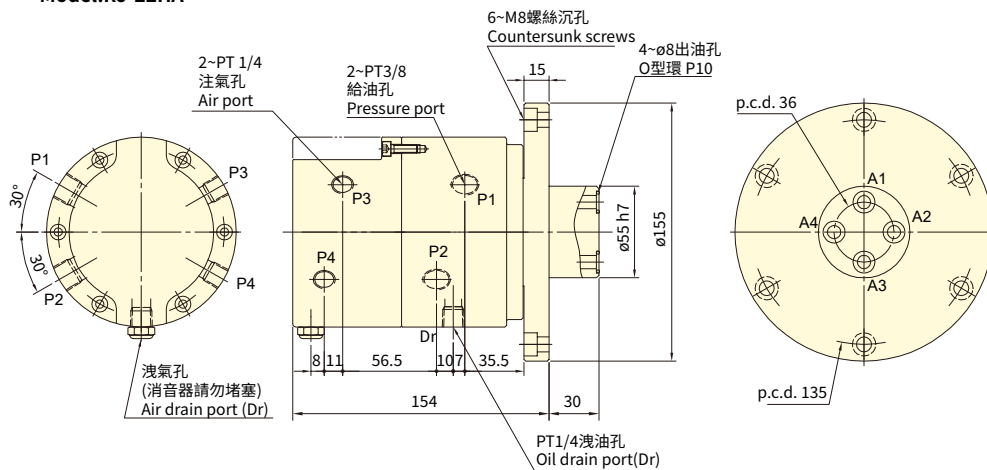
技術規格 SPECIFICATIONS

型號	分流數	最高迴轉數(r.p.m.)	最高使用壓力 (kgf/cm ²)	重量 (kg)
Model	Distributing	Max. speed (r.p.m.)	Max. pressure (kgf/cm ²)	Weight (kg)
RJ-A2E	2	3000	8	1.2

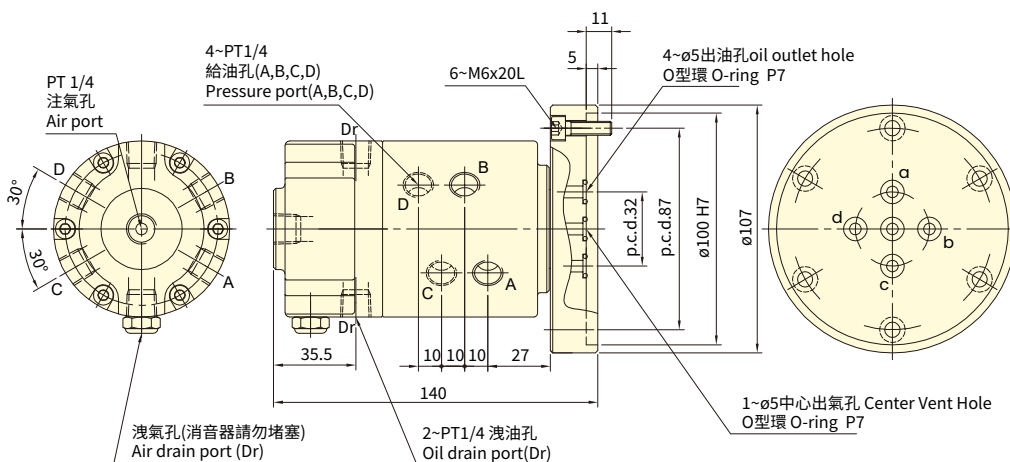


- 2 路油壓 + 2 路氣體的 4 通道設計及 4 路油壓 + 1 路氣體的 5 通道設計。
 - 支援多介質傳輸，適用於各種複雜加工需求。
 - 提供夾緊與鬆開控制，可延伸應用於工件定位檢測、刀具氣體清潔等功能。
 - 適用於銑車複合機的分度盤或多軸加工設備。
 - 採用高性能密封結構，有效防止油壓外漏，確保長時間穩定運轉。
- Available Configurations: 4-Channel (2 Hydraulic + 2 Pneumatic) and 5-Channel (4 Hydraulic + 1 Pneumatic)
 - Enables clamping and unclamping control; applicable to workpiece detection, tool air-blow cleaning, and similar automation functions.
 - Ideal for rotary tables on mill-turn machines and multi-axis machining centers.
 - Features high-performance sealing technology to prevent leakage of oil, ensuring long-term operational stability.
- 空壓、油路配置、通道數與安裝介面皆可依需求客製化，可支援雙介質。
 - 可客製配合光學尺整合，提升控制精度與系統連動性。
 - Customizable Pneumatic and hydraulic configurations, number of passages, and mounting interface and supports dual media
 - Optional integration with optical scales is available for enhanced precision and system synchronization.

Model:RJ-22HA



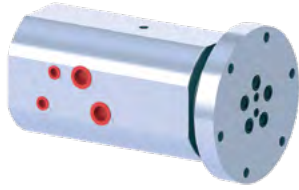
Model:RJ-41HA



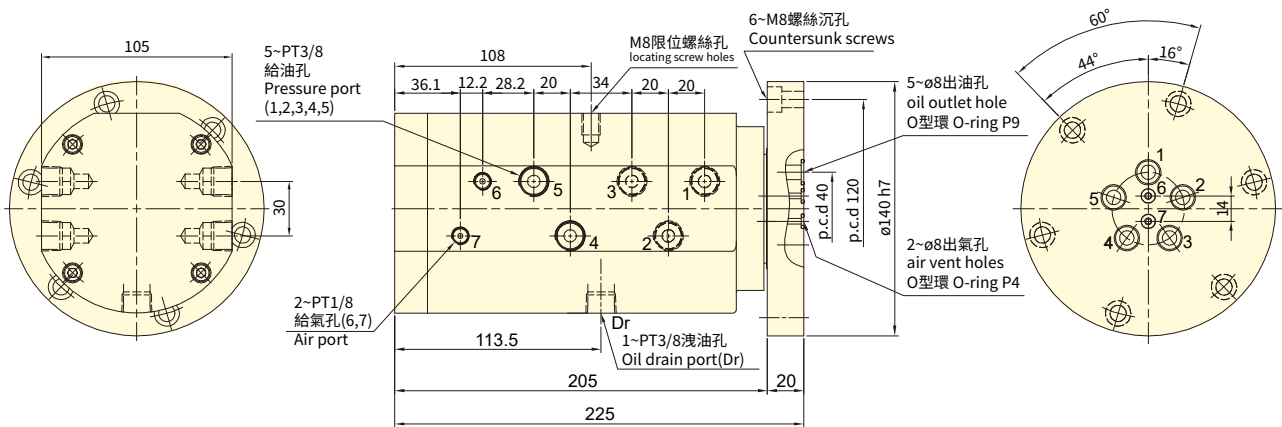
保留規格修改的權利 Subject to technical changes

技術規格 SPECIFICATIONS

型號	分流數	最高迴轉數(r.p.m.)	最高使用壓力Max. pressure MPa(kgf/cm ²)		重量 (kg)
Model	Distributing	Max. speed (r.p.m.)	氣壓Pneumatic	油壓Hydraulic	Weight (kg)
RJ-22HA	2 油 + 2 氣	1000	8	60	10.5
RJ-41HA	4 油 + 1 氣	3000	8	50	2.95



- 5油壓 + 2氣壓 7 通道設計，支援多介質傳輸，適用於同時控制夾緊與鬆開等複合動作。
 - 全密封注氣設計，各通道互不干擾，維持壓力穩定，注氣部可支援真空應用。
 - 高效密封結構，防止油氣交叉滲漏，提升系統可靠性與加工精度。
 - 支援中低速旋轉，適用於多軸工站及複合加工機。
 - 5 Hydraulic + 2 Pneumatic Channel Design.
 - Supports multi-media transmission, ideal for simultaneous control of clamping and unclamping operations.
 - The fully sealed air passage design ensures independent channels for stable pressure, with the pneumatic section also supporting vacuum applications.
 - High-performance sealing structure prevents cross-leakage between oil and air, enhancing system reliability and machining accuracy.
 - Supports medium to low-speed rotation, suitable for multi-axis workstations and compound machining centers.
- 空壓、油路配置、通道數與安裝介面皆可依需求客製化，可支援雙介質。
 - 可客製配合光學尺整合，提升控制精度與系統連動性。
 - Customizable Pneumatic and hydraulic configurations, number of passages, and mounting interface and supports dual media
 - Optional integration with optical scales is available for enhanced precision and system synchronization.



保留規格修改的權利 Subject to technical changes

技術規格 SPECIFICATIONS

型號	分流數	最高迴轉數(r.p.m.)	最高使用壓力Max. pressure (kgf/cm ²)		重量 (kg)
Model	Distributing	Max. speed (r.p.m.)	氣壓	油壓	Weight (kg)
RJ-52HV	5 油 + 2 氣	1000	8	70	15.9