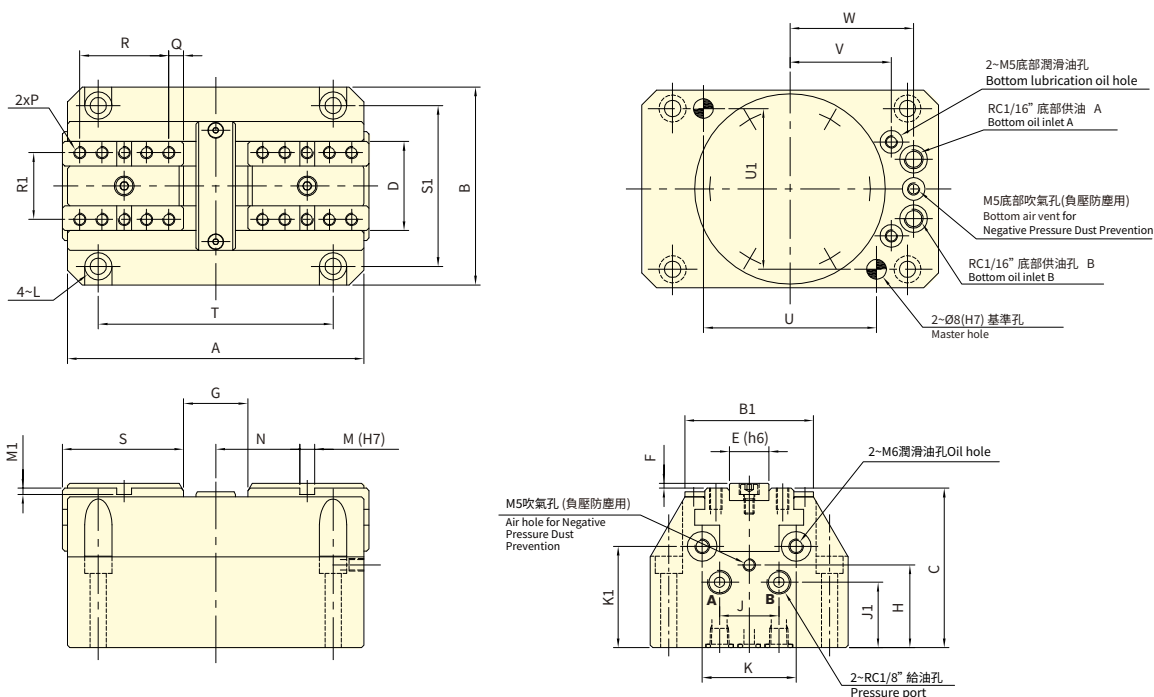




- 氣壓驅動快速開合，有效提升加工效率。
- 外型薄、短，提升機台作業空間利用率。
- 側面與底部皆設油路輸入口，可依需求彈性連接。
- 適用於銑床與加工中心機。
- 亦可使用油壓，夾持開合速度會較為緩慢。
- Pneumatic actuation enables rapid opening and closing for improved machining efficiency.
- Slim and compact design maximizes machine workspace utilization.
- Oil ports are available on both side and bottom for flexible connection options.
- Suitable for milling machines and machining centers.
- Hydraulic actuation is also supported; however, clamping and unclamping speed will be comparatively slower.

虎鉗



保留規格修改的權利
Subject to technical changes

技術規格 SPECIFICATIONS

型號	爪行程(直徑)	最大夾持直徑	最大夾持力		最大使用壓力		夾爪最大高度	重量
			氣壓	油壓	氣壓	油壓		
Model	Jaw stroke (Dia.)	Max. Chucking (Dia.)	Pneumatic	Hydraulic	Pneumatic	Hydraulic	Max. Jaw Height	Weight
	mm	mm	kN (kgf)	kN (kgf)	MPa(kgf/cm ²)	MPa(kgf/cm ²)	mm	kg
VRA-808	8.8	100	2.2(224)	8.1(830)	0.9(9)	2.1(21)	60	3.8
VRA-1012	12	120	4.4(450)	13.4(1370)	0.9(9)	2.1(21)	60	7
VRA-1214	14	160	15.0(1530)	31.1(3171)	0.9(9)	2.1(21)	60	12

外型尺寸 DIMENSIONS

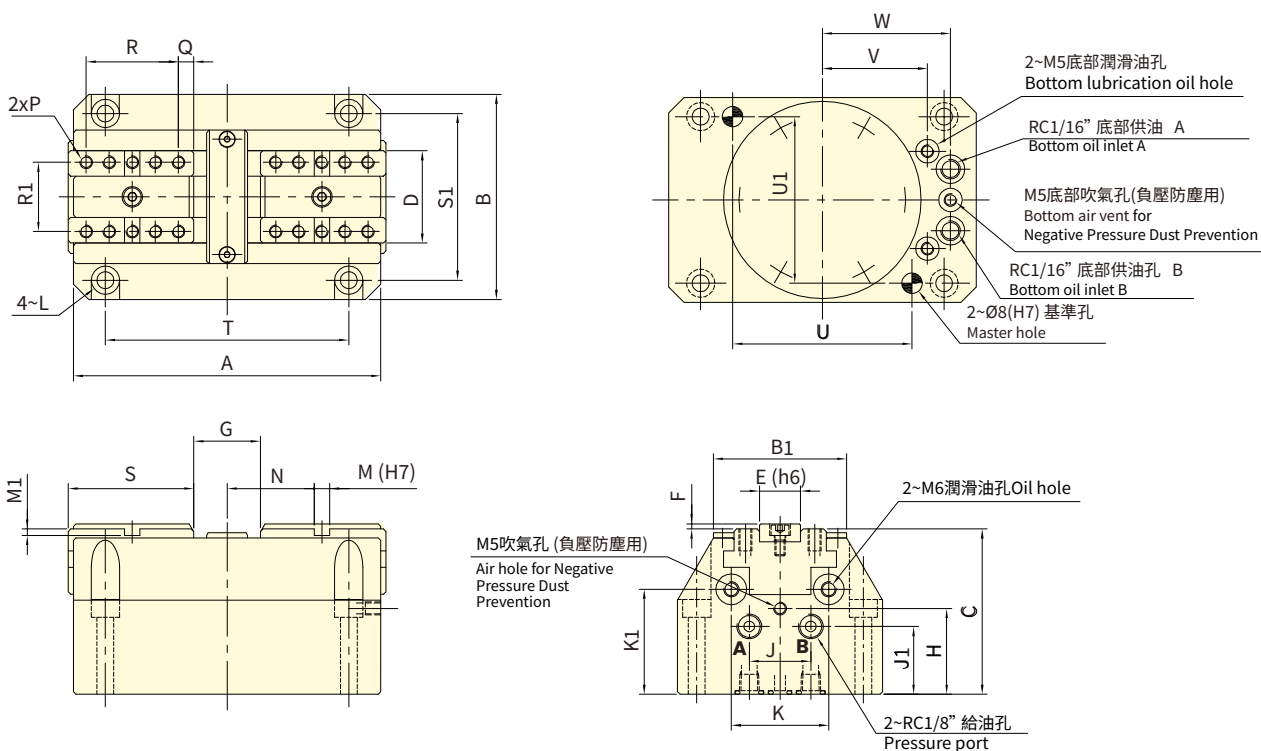
Model	A	B	B1	C	D	E(h6)	F	G max	G min	H	J	J1	K	K1	L
VRA-808	120	80	52	64.5	36	16	2	26	17.2	33.5	24	26.5	38	41	M6
VRA-1012	150	100	64	76	45	20	2	32	20	39	30	32	45	49	M8
VRA-1214	188	125	82	82.5	60	24	2.5	36	22	41.5	36	34.5	58	51	M8

Model	M(H7)	M1	N max	N min	P	Q	R	R1	S	T	T1	U	U1	V	W
VRA-808	6	2.5	34	29.6	10~M5x0.8	6	9x4	27	49	95	65	70	65	41	50
VRA-1012	8	2.5	44	38	10~M6x1	8	12x4	32	63	120	80	90	80	54	63
VRA-1214	8	3	60	53	12~M8x1.25	10	12x5	43	80	158	100	128	100	69	78



- 僅適用於油壓，最大夾持力不變，提高開合速度。
 - 外型薄、短，提升機台作業空間利用率。
 - 側面與底部皆設油路輸入口，可依需求彈性連接。
 - 適用於銑床與加工中心機。
- Hydraulic operation only. Opening and closing speed is increased while maintaining maximum gripping force.
 - Slim and compact design maximizes machine workspace utilization.
 - Oil ports are available on both side and bottom for flexible connection options.
 - Suitable for milling machines and machining centers.

虎鉗



保留規格修改的權利
Subject to technical changes

技術規格 SPECIFICATIONS

型號	爪行程(直徑)	最大夾持直徑	最大夾持力	最大使用壓力	夾爪最大高度	重量
Model	Jaw stroke (Dia.)	Max.Chucking (Dia.)	油壓 Hydraulic	油壓 Hydraulic	Max. Jaw Height	Weight
	mm	mm	kN (kgf)	MPa(kgf/cm ²)	mm	kg
VRH-808	8.8	100	7.8(795)	5.0(50)	60	3.9
VRH-1012	12	120	15.6(1590)	5.0(50)	60	7.2
VRH-1214	14	160	31.1(3171)	6.0(60)	60	12.1

外型尺寸 DIMENSIONS

Model	A	B	B1	C	D	E(h6)	F	G max	G min	H	J	J1	K	K1	L
VRH-808	120	80	52	64.5	36	16	2	26	17.2	33.5	24	26.5	38	41	M6
VRH-1012	150	100	64	76	45	20	2	32	20	39	30	32	45	49	M8
VRH-1214	188	125	82	82.5	60	24	2.5	36	22	41.5	36	34.5	58	51	M8

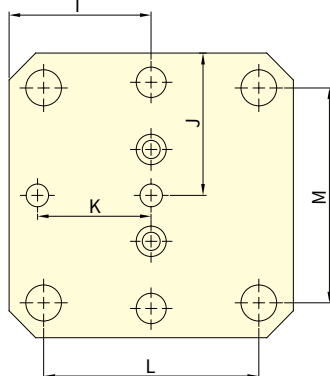
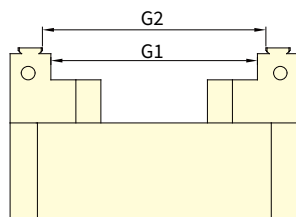
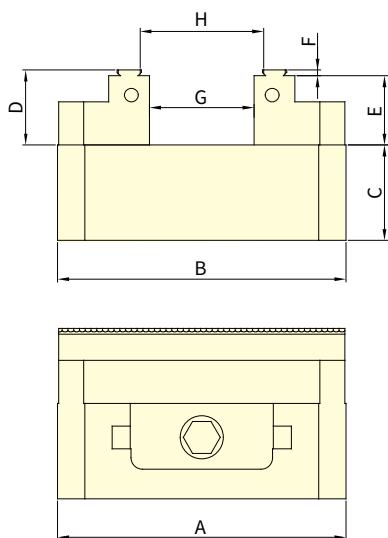
Model	M (H7)	M1	N max	N min	P	Q	R	R1	S	T	T1	U	U1	V	W
VRH-808	6	2.5	34	29.6	10~M5x0.8	6	9x4	27	49	95	65	70	65	41	50
VRH-1012	8	2.5	44	38	10~M6x1	8	12x4	32	63	120	80	90	80	54	63
VRH-1214	8	3	60	53	12~M8x1.25	10	12x5	43	80	158	100	128	100	69	78



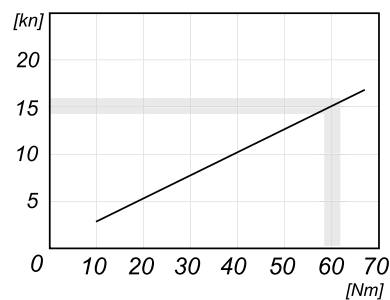
- 自動定心設計，適用於 4 軸與 5 軸 CNC 旋轉工作台，可搭配臥式或立式加工機使用。
- 高重複定位精度，中心重複定位精度達 ± 0.01 mm，確保工件精準夾持與穩定加工。
- 高剛性耐用結構，本體採高品質合金鋼製成，滑動面經高頻熱處理（HRC 45 以上），具優異耐磨性與穩定性。
- 全鋼熱處理鉗口，鉗口材質為全鋼並熱處理至 HRC 55 以上，設計可正反兩用，並可互換，大幅提升使用壽命。
- 適用多種加工環境，結構精密、操作簡便，適合高效率、高精度的加工應用。

- Self-centering design ideal for 4-axis and 5-axis CNC rotary tables; compatible with horizontal and vertical machining.
- Centering repeatability of ± 0.01 mm ensures precise and stable workpiece positioning.
- Vise body made of high-grade alloy steel with hardened sliding surfaces (HRC 45+) for excellent wear resistance and rigidity.
- Jaws are made of fully hardened steel (HRC 55+), reversible and interchangeable for extended service life.
- Precision-built and easy to operate, ideal for demanding machining environments requiring high efficiency and accuracy.

虎鉗



夾持曲線圖(Clamping curve)



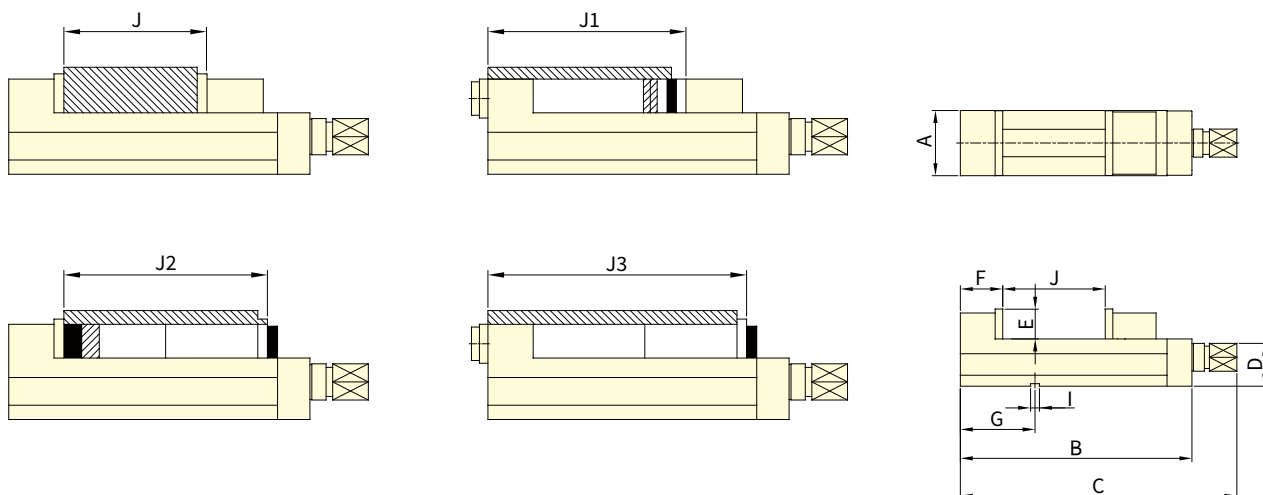
保留規格修改的權利
Subject to technical changes

外型尺寸 DIMENSIONS

Model	A	B	C	D	E	F	G	G1	G2	H	I	J	K	L	M	重量 (kg)
MVSC-764	76	102	35	21	18.5	2.5	45	78	82	49	51	38	30	52	52	2.02
MVSC-1275	127	127	42	33	30	2.5	47	91	96	52	63.5	63.5	50.8	96	96	5.82
MVSC-1276	127	153	42	33	30	2.5	73	117	122	78	76.5	63.5	50.8	96	96	6.64
MVSC-1278	127	210	42	33	30	2.5	130	167	172	135	105.5	63.5	50.8	96	96	8.26
MVSC-12710	127	255	42	33	30	2.5	175	219	226	180	127.5	63.5	50.8	96	96	9.5
MVSC-15010	150	255	57	37	34	2.5	143	207	212	148	127.5	75	100	96	96	15.54



- 虎鉗床身與活動鉗口一體鑄造，一體鑄造結構提供卓越剛性與穩定性，適合高精度加工。
- 下壓式「半球段」機構，有效消除鉗口浮動與工件傾斜，特殊機構設計夾持時產生下壓力道，提升定位精度並延長鉗口壽命。
- 高強度球墨鑄鐵主體 (FCD60，相當於 GGG60)，主體採用抗拉強度 60 kgf/mm² (約 80,000 psi) 之球墨鑄鐵，強固耐用，適用於重切削環境。
- 滑動面火焰硬化至 HRC 45°，提升耐磨性與使用壽命，強化滑動表面硬度，確保虎鉗長時間操作下仍保持精度穩定。
- One-piece casting of the vise bed and movable jaw offers outstanding rigidity and stability, ideal for precision machining.
- The down-thrust spherical segment mechanism applies downward clamping force to eliminate jaw lifting and workpiece tilting, enhancing positioning accuracy and jaw longevity.
- The body is made of high-tensile ductile iron FCD60 (equivalent to GGG60), offering durability and strength for heavy-duty machining.
- Slideways are flame-hardened to HRC 45° for excellent wear resistance, maintaining long-term accuracy during extended use.



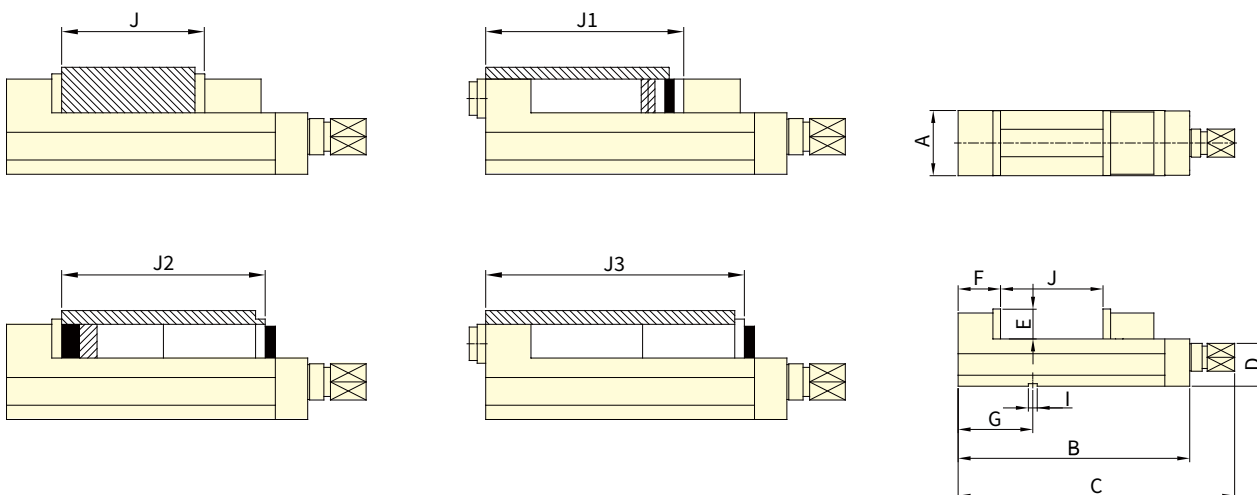
保留規格修改的權利
Subject to technical changes

外型尺寸 DIMENSIONS

MODEL	A	B	C	D	E	F	G	I	鉗口張開度 (最大) Jaw Opening (Max.)				夾持力 Clamping Force (kgf)	重量 Weight (kgs)
									J	J1	J2	J3		
MVRH-100	101	380	480	85	48	80	125	16	135	200	240	330	4000	26
MVRH-130	131	445	545	95	55	85	150	18	190	250	300	390	5000	40
MVRH-160	161	535	635	105	58	100	165	18	250	330	370	480	5500	61
MVRH-160L	161	585	685	105	58	100	165	18	300	380	420	530	5500	65
MVRH-200	201	610	710	110	63	108	190	18	300	370	430	550	6900	82



- 虎鉗床身與活動鉗口一體鑄造，一體成型設計提供優異剛性，提升夾持穩定性與耐用性。
- 下壓式「半球段」機構，有效消除鉗口浮動與工件傾斜，特殊結構設計在夾持時產生下壓力道，有效提高加工精度與延長使用壽命。
- 高強度球墨鑄鐵主體（FCD60，相當於GGG60），虎鉗主體採用抗拉強度達 60 kgf/mm²（約 80,000 psi）的高剛性材料，適用於高負荷加工環境。
- 床身滑動面經火焰硬化處理至 HRC 45°，提升耐磨壽命，加強抗磨耗能力，適用長時間重複加工，維持穩定夾持性能。
- One-piece casting of the vise bed and movable jaw ensures excellent rigidity, enhancing clamping stability and durability.
- The down-thrust spherical segment mechanism generates downward force during clamping, preventing jaw lifting and workpiece tilting—improving machining accuracy and jaw life.
- Constructed from high-tensile ductile iron (FCD60 / equivalent to GGG60) with a tensile strength of 60 kgf/mm² (approx. 80,000 psi), suitable for demanding machining conditions.
- Flame-hardened slideways (HRC 45°) provide superior wear resistance, maintaining consistent clamping performance even under prolonged use.



保留規格修改的權利
Subject to technical changes

外型尺寸 DIMENSIONS

MODEL	A	B	C	D	E	F	G	I	鉗口張開度 (最大) Jaw Opening(Max.)				夾持力 Clamping Force (kgf)	重量 Weight (kgs)
									J	J1	J2	J3		
MVRE-100	101	400	490	85	48	80	125	16	155	200	240	33	3000	27
MVRE-130	131	645	555	95	55	85	150	18	230	250	300	390	3500	41
MVRE-160	161	555	645	105	58	100	165	18	300	330	370	480	4000	62
MVRE-160L	161	615	705	105	58	100	165	18	350	380	420	530	4000	65
MVRE-200	201	630	720	110	63	108	190	18	340	370	430	550	4500	83

虎鉗