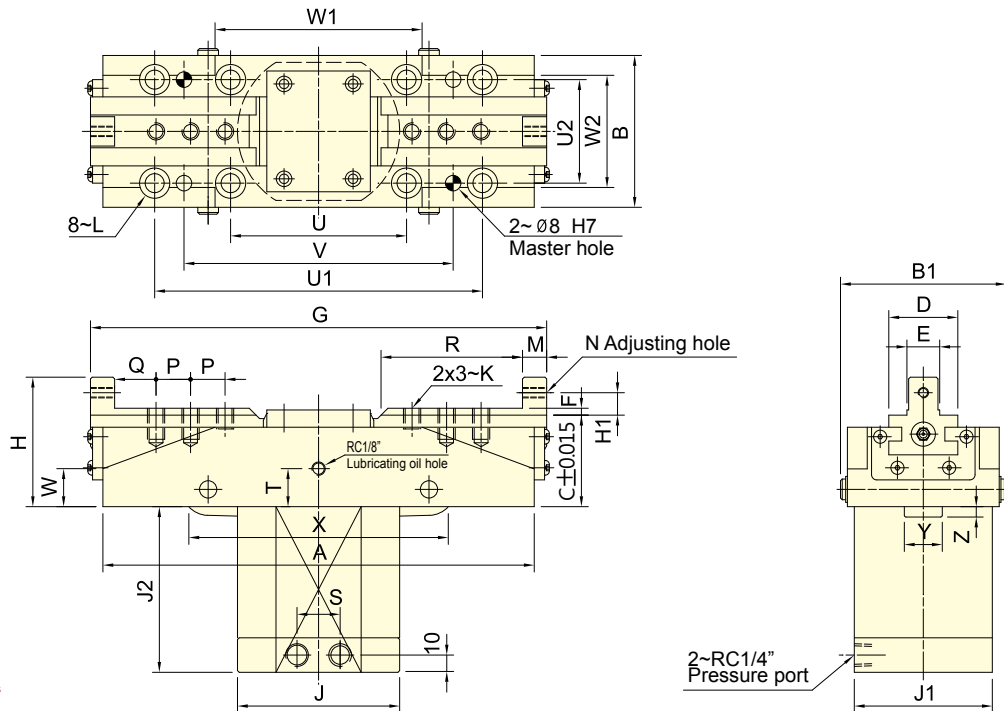




- CRANK type 2-jaw synchronous clamp with long jaw stroke.
- Matching surfaces of all parts hardened, ground and lubricated directly.
- High rigidity and high clamping accuracy.

SYNCHRONOUS CLAMPS



Subject to technical changes

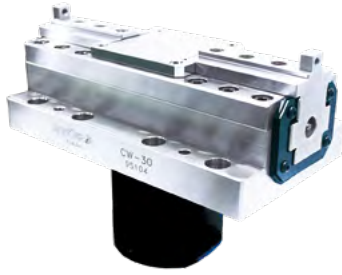
## SPECIFICATIONS

Model	Eff. Piston area		Jaw stroke(Dia.) mm	Clamping capacity mm	Max. clamping force kN (kgf)	Max. pressure MPa(kgf/cm <sup>2</sup> )	Weight kg
	Extend cm <sup>2</sup>	Retract cm <sup>2</sup>					
CP-20	28.27	25.13	20	150	14.4(1465)	3.5(35)	9.5
CP-30A	28.27	25.13	30	180	14.4(1465)	3.5(35)	11
CP-30	28.27	25.13	30	210	14.4(1465)	3.5(35)	12
CP-40	28.27	25.13	40	200	14.4(1465)	3.5(35)	12
CP-50	38.48	33.57	50	215	17.7(1812)	3.5(35)	18.5
CP-70	50.26	45.35	70	235	23.9(2434)	3.5(35)	30

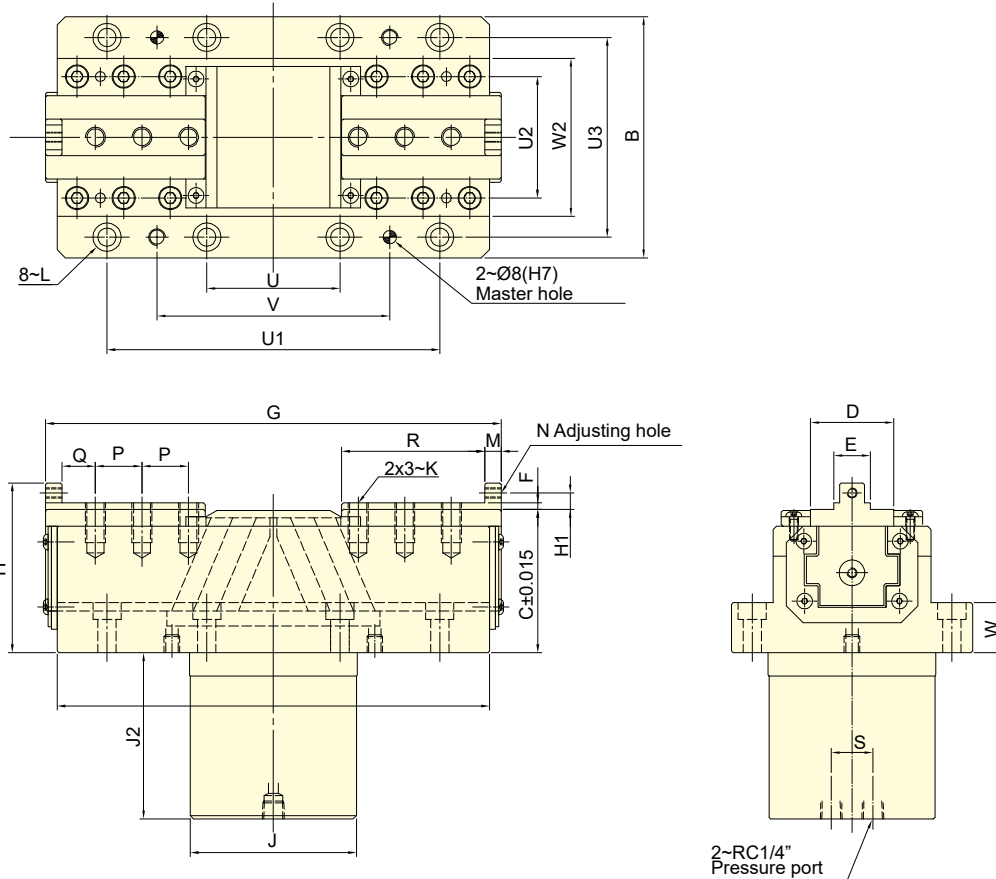
## DIMENSIONS

Model	A	B	B1	C	D	E(h6)	F	G max.	Gmin	H	H1	J	J1	J2	K	L	M
CP-20	215	88	96	53	40	18	4	249	229	75	13	94	76	83.5	M10x1.5	M10	12
CP-30A	250	88	96	53	40	18	4	295	265	75	13	94	76	96	M10x1.5	M10	14
CP-30	280	88	96	53	40	22	4	327	297	75	13	94	76	96	M12x1.75	M10	14
CP-40	270	88	96	53	40	22	4	331	291	75	13	94	76	110	M12x1.75	M10	14
CP-50	300	110	115	65	50	28	5	369	319	90	15	105	105	120	M12x1.75	M10	16
CP-70	346	120	126	89	55	32	5	430	360	114	15	115	115	146	M14x2	M12	16

Model	N	P	Q	R	S	T	U	U1	U2	V	W	W1	W2	X	Y	Z
CP-20	M6x1	18	20	66	24	22	102	190	60	156	32	110	65	150	22	4
CP-30A	M6x1	20	24	96	24	22	102	190	60	156	20	120	65	156	22	6
CP-30	M6x1	20	24	98	24	22	102	190	60	156	23	110	65	156	22	6
CP-40	M6x1	20	24	98	24	22	102	190	60	156	25	110	65	150	22	10.5
CP-50	M8x1.25	21	28	102	30	32	105	230	85	195	29	140	80	180	30	10
CP-70	M8x1.25	23	28	112	30	52	120	275	95	240	42	155	90	210	34	23.5



- This wedge-driven synchronous clamp features a long jaw stroke, providing continuous high clamping force during the machining process.
- The sliding surfaces are hardened and precision ground, with direct lubrication to enhance performance.
- High clamping accuracy and excellent dust protection.



Subject to technical changes

## SPECIFICATIONS

Model	Eff. Piston area		Jaw stroke(Dia.)	Clamping capacity	Max. clamping force	Max. pressure	Weight
	Extend	Retract					
	cm <sup>2</sup>	cm <sup>2</sup>	mm	mm	kN (kgf)	MPa(kgf/cm <sup>2</sup> )	kg
<b>CW-30</b>	31.10	24.10	30	150	34.3(3500)	7.0(70)	32

## DIMENSIONS

Model	A	B	C	D	E(h6)	F	Gmax	Gmin	H	H1	J	J2	K	L	M
<b>CW-30</b>	260	145	86	50	22	4	304	274	102	10	100	100	M12x1.75	M10	10
Model	N	P	Q	R	S	U	U1	U2	U3	V	W	W2			
<b>CW-30</b>	M6x1	28	20	86	25	80	200	120	73	140	30	30			