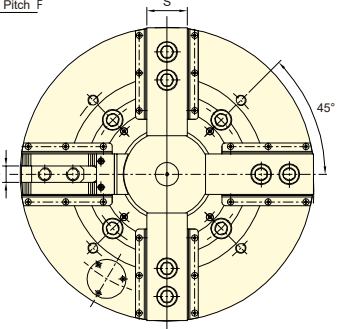
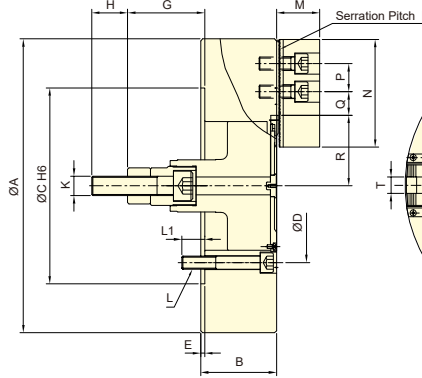
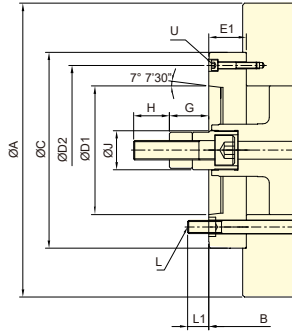
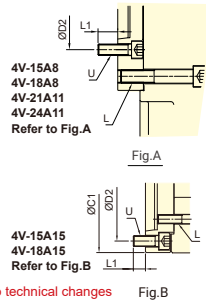




- WEDGE-HOOK type 4-jaw high speed power chuck.
- Sealed against swarf, chips and coolant, suitable for vertical lathe.



Subject to technical changes  
SPECIFICATIONS

Model	Plunger stroke mm	Jaw stroke (Dia.) mm	Chucking Dia. Max. mm	Chucking Dia. Min. mm	Max. D.B. pull kN (kgf)	Max. Clamping force kN (kgf)	Max. speed min <sup>-1</sup> (r.p.m.)	Moment of inertia		Weight		Matching cyl.	Max. pressure MPa (kgf/cm <sup>2</sup> )	
								kg·m <sup>2</sup>	kg	kg	kg			
<b>4V-12</b>	<b>A8</b>	30	12.7	304	48	41(4180)	156(15900)	2520	0.72	<b>0.79</b>	59	<b>67</b>	RK-150 RE-150	2.6(26)
<b>4V-15</b>	<b>A8</b>	35	16	381	36	81.9(8360)	245.1(25000)	2300	2.10	<b>2.39</b>	108	<b>131</b>	RK-200 RE-200K	2.8(28) 3.0(30)
<b>4V-15</b>	<b>A11</b>	35	16	381	36	81.9(8360)	245.1(25000)	2300	2.10	<b>2.39</b>	108	<b>130</b>		
<b>4V-15</b>	<b>A15</b>	35	16	381	36	81.9(8360)	245.1(25000)	2300	2.10	<b>2.79</b>	108	<b>139</b>		
<b>4V-18</b>	<b>A8</b>	35	16	450	60	81.9(8360)	245.1(25000)	2050	3.51	<b>3.80</b>	139.3	<b>162</b>		
<b>4V-18</b>	<b>A11</b>	35	16	450	60	81.9(8360)	245.1(25000)	2050	3.51	<b>3.80</b>	139.3	<b>160.9</b>		
<b>4V-18</b>	<b>A15</b>	35	16	450	60	81.9(8360)	245.1(25000)	2050	3.51	<b>4.20</b>	139.3	<b>172</b>		
<b>4V-21</b>	<b>A11</b>	35	16	530	62	81.9(8360)	271.6(27700)	1450	6.98	<b>7.62</b>	199	<b>230</b>		
<b>4V-21</b>	<b>A15</b>	35	16	530	62	81.9(8360)	271.6(27700)	1450	6.98	<b>7.53</b>	199	<b>223.7</b>		
<b>4V-24</b>	<b>A11</b>	35	16	610	152	81.9(8360)	271.6(27700)	1350	11.34	<b>11.98</b>	243.8	<b>275</b>		
<b>4V-24</b>	<b>A15</b>	35	16	610	152	81.9(8360)	271.6(27700)	1350	11.34	<b>11.88</b>	243.8	<b>268.3</b>		
<b>4V-32</b>	<b>A15</b>	35	16	800	152	81.9(8360)	271.6(27700)	880	32.58	<b>33.13</b>	396	<b>419.9</b>		

### DIMENSIONS

Model	A	B	C	C1	D	D1	D2	E	E1	F	G max.	G min.	H	J				
<b>4V-12</b>	<b>A8</b>	304	107	<b>141</b>	220	-	171.4	<b>139.72</b>	<b>190</b>	6	<b>40</b>	1.5	113	<b>73</b>	83	<b>43</b>	36	<b>50</b>
<b>4V-15</b>	<b>A8</b>	381	116	<b>164</b>	300	-	235	<b>139.72</b>	<b>171.4</b>	6	<b>54</b>	1.5	153	<b>99</b>	118	<b>64</b>	55	<b>60</b>
<b>4V-15</b>	<b>A11</b>	381	116	<b>168</b>	300	-	235	<b>196.87</b>	<b>260</b>	6	<b>58</b>	1.5	153	<b>95</b>	118	<b>60</b>	55	<b>60</b>
<b>4V-15</b>	<b>A15</b>	381	116	<b>172</b>	-	380	235	<b>285.78</b>	<b>330.2</b>	6	<b>62</b>	1.5	153	<b>91</b>	118	<b>56</b>	55	<b>60</b>
<b>4V-18</b>	<b>A8</b>	450	116	<b>164</b>	300	-	235	<b>139.72</b>	<b>171.4</b>	6	<b>54</b>	1.5	153	<b>99</b>	118	<b>64</b>	55	<b>60</b>
<b>4V-18</b>	<b>A11</b>	450	116	<b>168</b>	300	-	235	<b>196.87</b>	<b>260</b>	6	<b>58</b>	1.5	153	<b>95</b>	118	<b>60</b>	55	<b>60</b>
<b>4V-18</b>	<b>A15</b>	450	116	<b>172</b>	-	380	235	<b>285.78</b>	<b>330.2</b>	6	<b>62</b>	1.5	153	<b>91</b>	118	<b>56</b>	55	<b>60</b>
<b>4V-21</b>	<b>A11</b>	530	127	<b>167</b>	380	-	330.2	<b>196.87</b>	<b>235</b>	6	<b>46</b>	3	137	<b>91</b>	102	<b>56</b>	55	<b>60</b>
<b>4V-21</b>	<b>A15</b>	530	127	<b>167</b>	380	-	330.2	<b>285.78</b>	<b>330.2</b>	6	<b>46</b>	3	137	<b>91</b>	102	<b>56</b>	55	<b>60</b>
<b>4V-24</b>	<b>A11</b>	610	127	<b>167</b>	380	-	330.2	<b>196.87</b>	<b>235</b>	6	<b>46</b>	3	137	<b>91</b>	102	<b>56</b>	55	<b>60</b>
<b>4V-24</b>	<b>A15</b>	610	127	<b>167</b>	380	-	330.2	<b>285.78</b>	<b>330.2</b>	6	<b>46</b>	3	137	<b>91</b>	102	<b>56</b>	55	<b>60</b>
<b>4V-32</b>	<b>A15</b>	800	147	<b>187</b>	380	-	330.2	<b>285.78</b>	<b>330.2</b>	6	<b>46</b>	3	137	<b>91</b>	102	<b>56</b>	55	<b>60</b>

Model	K	L	L1	M	N	P	Q max.	Q min.	R max.	R min.	S	T	U		
<b>4V-12</b>	<b>A8</b>	M20x2.5	3~M16	24	<b>24</b>	42	110	30	51.75	15.75	61.3	54.9	40	16	<b>4~M8</b>
<b>4V-15</b>	<b>A8</b>	M30x3.5	6~M20	35	<b>24</b>	66	165	43	40.75	18.25	87.5	79.4	62	25.5	<b>6~M16</b>
<b>4V-15</b>	<b>A11</b>	M30x3.5	6~M20	35	<b>32</b>	66	165	43	40.75	18.25	87.5	79.4	62	25.5	<b>4~M10</b>
<b>4V-15</b>	<b>A15</b>	M30x3.5	6~M20	35	<b>26</b>	66	165	43	40.75	18.25	87.5	79.4	62	25.5	<b>6~M24</b>
<b>4V-18</b>	<b>A8</b>	M30x3.5	6~M20	35	<b>24</b>	66	165	43	51.22	18.22	108	100	62	25.5	<b>6~M16</b>
<b>4V-18</b>	<b>A11</b>	M30x3.5	6~M20	35	<b>32</b>	66	165	43	51.22	18.22	108	100	62	25.5	<b>4~M10</b>
<b>4V-18</b>	<b>A15</b>	M30x3.5	6~M20	35	<b>26</b>	66	165	43	51.22	18.22	108	100	62	25.5	<b>6~M24</b>
<b>4V-21</b>	<b>A11</b>	M30x3.5	6~M24	41	<b>35</b>	74	180	60	72.5	24.5	89	81	64	25	<b>6~M20</b>
<b>4V-21</b>	<b>A15</b>	M30x3.5	6~M24	41	<b>35</b>	74	180	60	72.5	24.5	89	81	64	25	<b>3~M12</b>
<b>4V-24</b>	<b>A11</b>	M30x3.5	6~M24	41	<b>35</b>	74	180	60	93.5	24.5	128	120	64	25	<b>6~M20</b>
<b>4V-24</b>	<b>A15</b>	M30x3.5	6~M24	41	<b>35</b>	74	180	60	93.5	24.5	128	120	64	25	<b>3~M12</b>
<b>4V-32</b>	<b>A15</b>	M30x3.5	6~M24	36	<b>35</b>	74	180	60	189.5	24.5	128	120	64	25	<b>3~M12</b>

The dimensions and the specifications of 4V-A type are in red data.



- WEDGE-HOOK type 4-jaw high speed power chuck.
- The jaws can be manually adjusted individually to help center the workpiece.
- Sealed against swarf, chips and coolant, suitable for vertical lathe.

4V-40 A20  
4V-50 A20  
4V-63 A20  
Refer to Fig.A

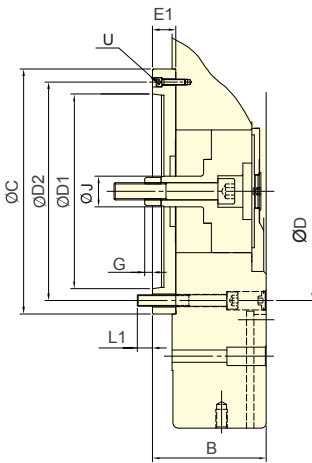
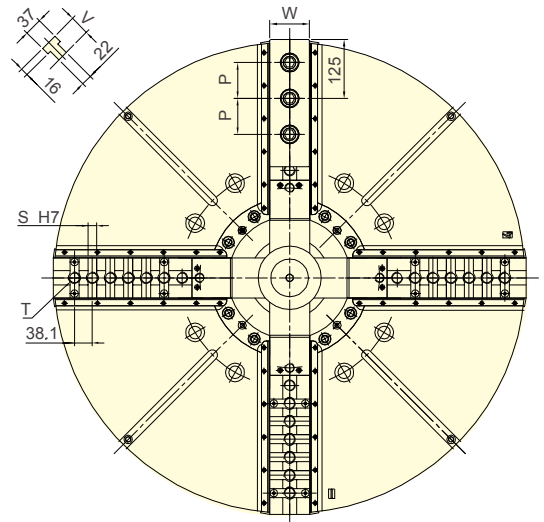
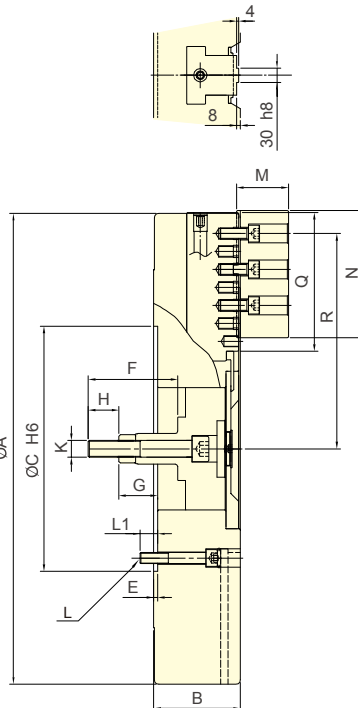


Fig.A



Subject to technical changes

### SPECIFICATIONS

Model		Plunger stroke	Jaw stroke (Dia.)	Chucking Dia. Max.	Chucking Dia. Min.	Max. D.B. pull	Max. Clamping force	Max. speed	Moment of inertia	Weight		Matching cyl.	Max. pressure
		mm	mm	mm	mm	kN (kgf)	kN (kgf)	min <sup>-1</sup> (r.p.m.)	kg·m <sup>2</sup>	kg			MPa (kgf/cm <sup>2</sup> )
4V-40	A20	57	46+(60)	1000	310	180(18350)	320(32620)	500	70 94	740 790	RK-250 RE-250 RE-A250 RE-L250	4.2(42)	
4V-50	A20	57	46+(60)	1250	290	180(18350)	320(32620)	450	222 224	1130 1180		4.2(42)	
4V-63		60	48+(80)	1600	390	200(20390)	360(36700)	340	565	2000		4.6(46)	

### DIMENSIONS

Model	A	B	C	D	D1	D2	E	E1	F	G max.	G min.	H	J	K
4V-40 A20	1000	184	226	520	463.6	412.78 463.6	8	50	190	123 73	66 16	65	65	M36x4
4V-50 A20	1250	200	242	520	463.6	412.78 463.6	8	50	190	123 73	66 16	65	65	M36x4
4V-63	1600	240	-	720	647.6	- -	8	-	214	131	71	65	-	M36x4

Model	L	L1	M	N	P	Q	R max.	R min.	S	T	U	V	W
4V-40 A20	M24	37	110	270	76.2	295	457	404	6~19.03	7~M24	3~M12	42	84
4V-50 A20	M24	38	110	270	76.2	416	563	510	9~19.03	9~M24	3~M12	42	84
4V-63	M30	46	110	270	76.2	540	738	674	12~19.03	13~M24	-	42	110

The dimensions and the specifications of 4V-A type are in red data.