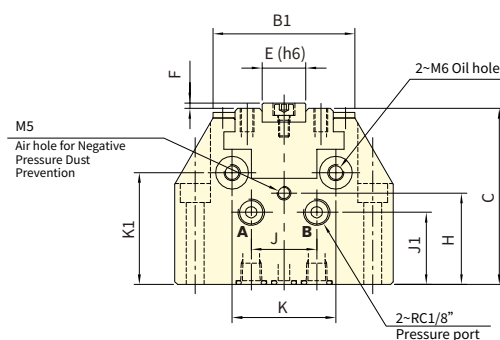
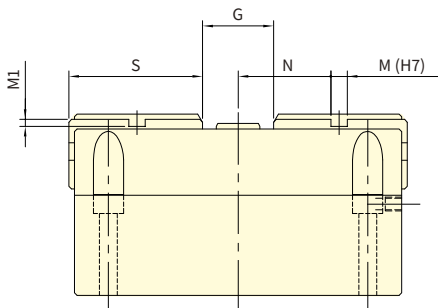
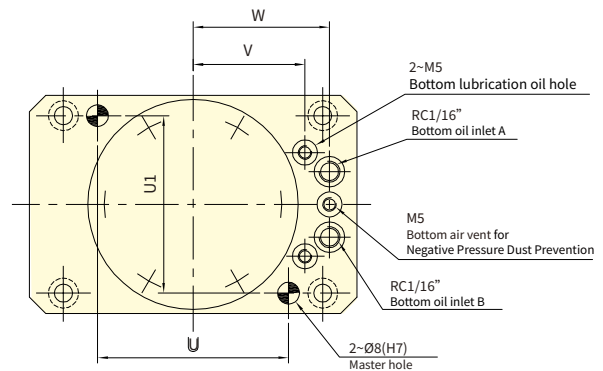
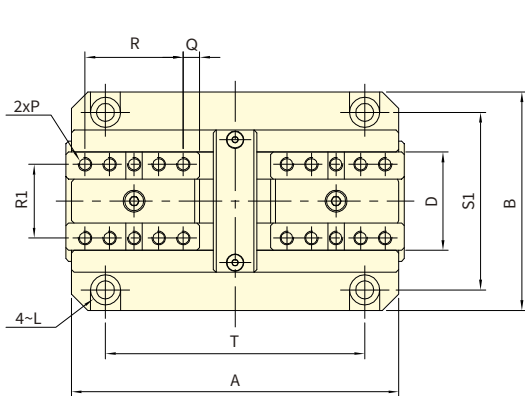




- Pneumatic actuation enables rapid clamping and unclamping, enhancing machining cycle efficiency.
- Slim and compact body design optimizes machine workspace utilization.
- Oil ports are available on both side and bottom, allowing flexible installation and hydraulic connection.
- Suitable for clamping applications on milling machines and machining centers.
- Hydraulic actuation is also supported; however, clamping and unclamping speed will be comparatively slower.

VISE



Subject to technical changes

SPECIFICATIONS

Model	Jaw stroke(Dia.)	Max.Chucking (Dia.)	Max. clamping force Pneumatic	Max. clamping force Hydraulic	Max. pressure Pneumatic	Max. pressure Hydraulic	Max. Jaw Height	Weight
	mm							
VRA-808	8.8	100	2.2(224)	8.1(830)	0.9(9)	2.1(21)	60	3.8
VRA-1012	12	120	4.4(450)	13.4(1370)	0.9(9)	2.1(21)	60	7
VRA-1214	14	160	15.0(1530)	31.1(3171)	0.9(9)	2.1(21)	60	12

DIMENSIONS

Model	A	B	B1	C	D	E(h6)	F	G max	G min	H	J	J1	K	K1	L
VRA-808	120	80	52	64.5	36	16	2	26	17.2	33.5	24	26.5	38	41	M6
VRA-1012	150	100	64	76	45	20	2	32	20	39	30	32	45	49	M8
VRA-1214	188	125	82	82.5	60	24	2.5	36	22	41.5	36	34.5	58	51	M8

Model	M(H7)	M1	N max	N min	P	Q	R	R1	S	T	T1	U	U1	V	W
VRA-808	6	2.5	34	29.6	10~M5x0.8	6	9x4	27	49	95	65	70	65	41	50
VRA-1012	8	2.5	44	38	10~M6x1	8	12x4	32	63	120	80	90	80	54	63
VRA-1214	8	3	60	53	12~M8x1.25	10	12x5	43	80	158	100	128	100	69	78