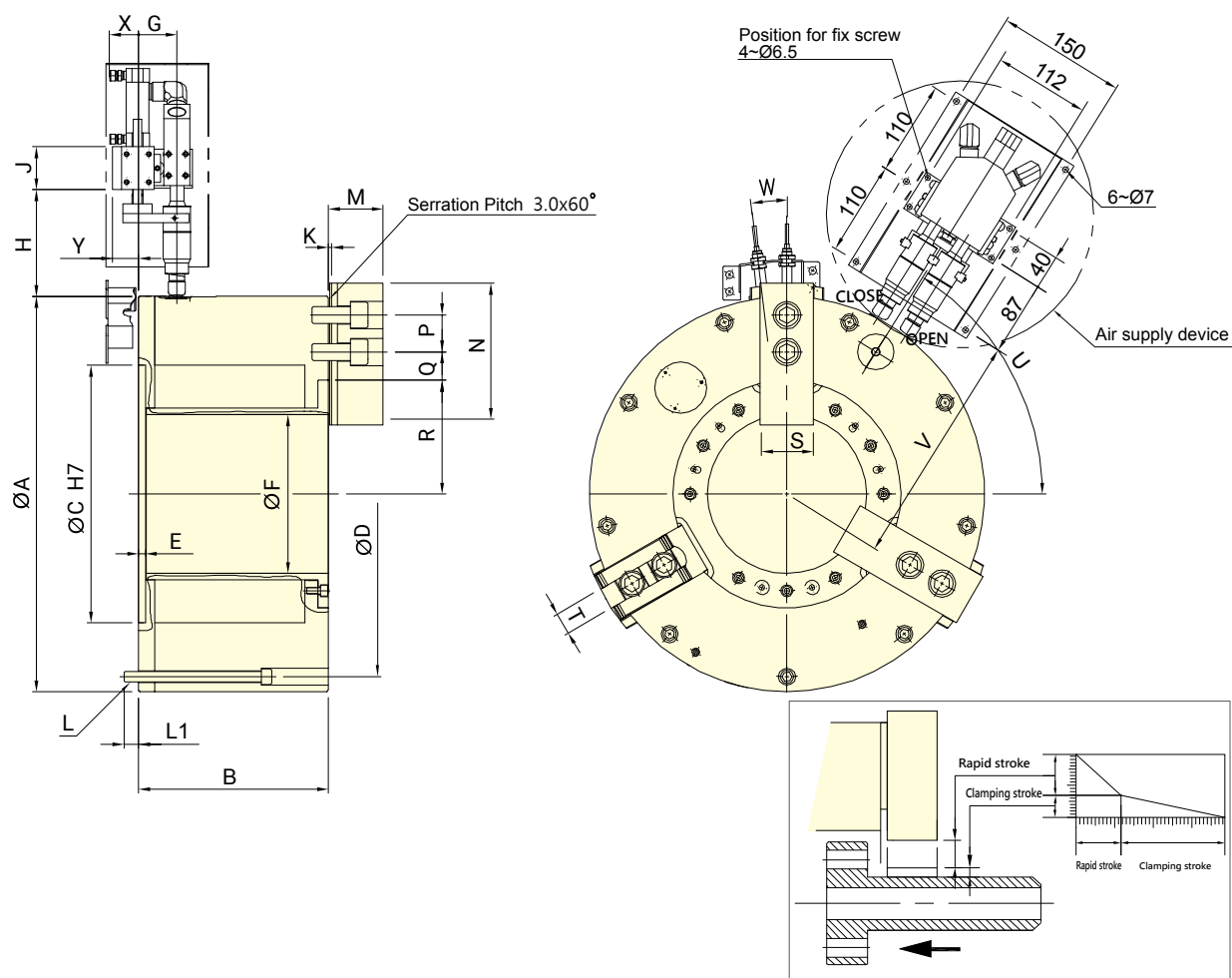


- Large through-hole 3-jaw power chuck with build in air cylinder.
 - With build-in "pressure detection" device which can check the rapidly decreasing pressure within the chuck, guarantee to the security when operating.
 - Features an air supply system, it is easy to install and maintain. No abrasion issue of traditional sealed ring. Maintenance cost and time can be saved.
 - The build-in "clamping detection" device can avoid jaws clamping the workpiece during the rapid stroke stage. This mechanism can also prevent causing the damage of the internal parts or flying out of workpiece.(only for O.D. clamping)
 - Extended jaw stroke design can shorten the processing time when gripping.
- Notice: No clamping in rapid stroke period.



Model	Thru-hole Dia.	Jaw stroke (Dia.)		Chucking Dia. Max.	Chucking Dia. Min.	Max. Clamping force	Max. speed	Moment of inertia	Weight	Air Consumption
	mm	mm		mm	mm	kN (kgf)	min ⁻¹ (r.p.m.)	kg-m ²	kg	lit(at 6kgf/cm ²)
APS-185	185	26	14	460	127	110(11216)	1300	6.45	198	22

Model	A	B	C	D	E	F	G	H	J	K	L	L1	M
APS-185	460	221	300	425	8	185	45	124	50	3.5	9~M12	17	63.7
Model	N	P	Q max.	Q min.	R max.	R min.	S	T	U	V	W	X	Y
APS-185	165	43	37	17	145	125	62	25.5	58	272	7°	38	30