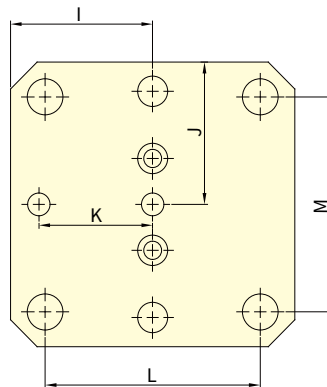
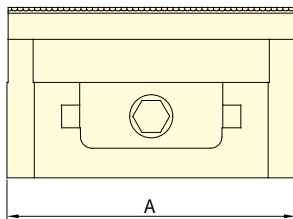
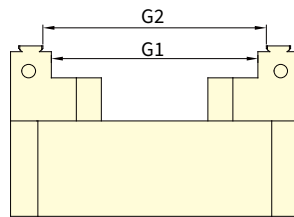
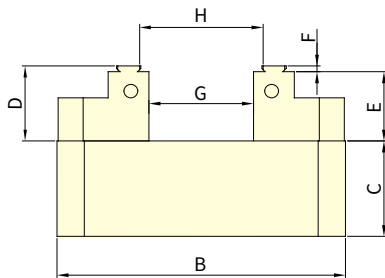
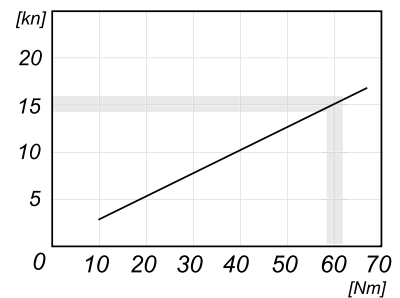


- Self-centering design ideal for 4-axis and 5-axis CNC rotary tables; compatible with horizontal and vertical machining.
- Centering repeatability of  $\pm 0.01$  mm ensures precise and stable workpiece positioning.
- Vise body made of high-grade alloy steel with hardened sliding surfaces (HRC 45+) for excellent wear resistance and rigidity.
- Jaws are made of fully hardened steel (HRC 55+), reversible and interchangeable for extended service life.
- Precision-built and easy to operate, ideal for demanding machining environments requiring high efficiency and accuracy.


**Clamping curve**


Subject to technical changes

#### DIMENSIONS

Model	A	B	C	D	E	F	G	G1	G2	H	I	J	K	L	M	Weight (kg)
<b>MVSC-764</b>	76	102	35	21	18.5	2.5	45	78	82	49	51	38	30	52	52	2.02
<b>MVSC-1275</b>	127	127	42	33	30	2.5	47	91	96	52	63.5	63.5	50.8	96	96	5.71
<b>MVSC-1276</b>	127	153	42	33	30	2.5	73	117	122	78	76.5	63.5	50.8	96	96	6.64
<b>MVSC-1278</b>	127	210	42	33	30	2.5	130	167	172	135	105.5	63.5	50.8	96	96	8.26
<b>MVSC-12710</b>	127	255	42	33	30	2.5	175	219	226	180	127.5	63.5	50.8	96	96	9.5
<b>MVSC-15010</b>	150	255	57	37	34	2.5	143	207	212	148	127.5	75	100	96	96	15.54