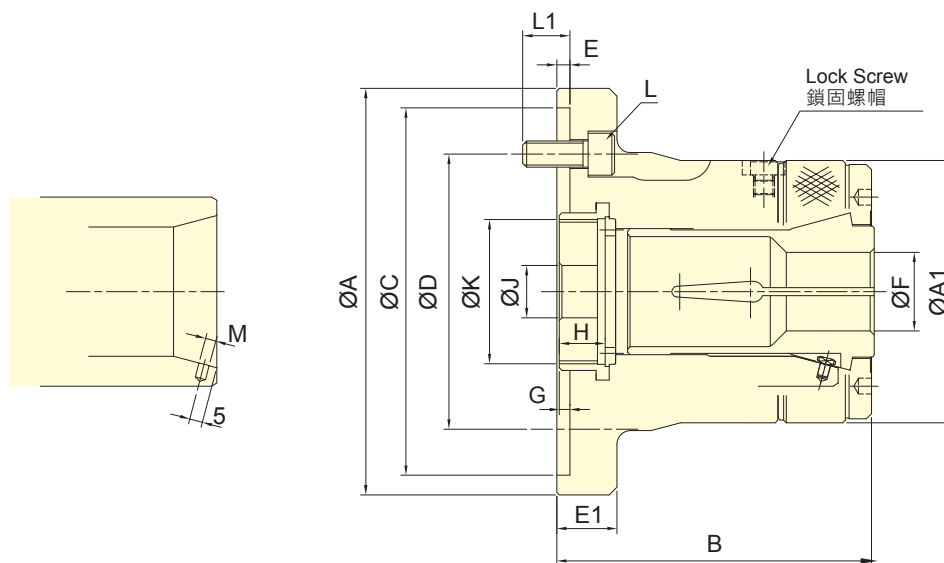




- 前推式彈性筒夾夾頭 · 適合CNC車床 · 專用機 · 或其他旋削機械。
- 高精度 · 高轉速及高剛性結構。
- 全面防水設計 · 防止切削水進入主軸通孔處。
- PUSH type collet used mainly on turning, CNC, special purpose machines , ect.
- High clamping accuracy, high speed and high rigidity.
- Sealed against swarf, chips and coolant.
- 搭配彈性筒夾須符合 DIN 6343 規範。
- The collet used must accord with DIN 6343.
- 專利產品字號 Patent numbers :  
 台灣 : PAT.NO.M380842(Taiwan)  
 大陸 : PAT.NO.ZL201020113762.X(China)



保留規格修改的權利  
Subject to technical changes

### 技術規格 SPECIFICATIONS

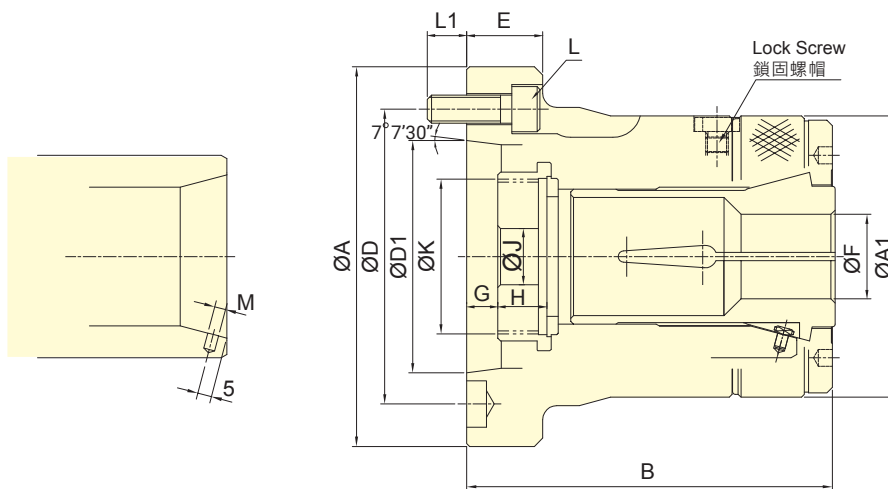
| 型號<br>Model | 套筒行程<br>Plunger stroke<br>mm | 最大夾持能力<br>Max. Chucking Capacity |                      |                    | 容許最大入力<br>Max. D.B. pull<br>kN (kgf) | 最大夾持力<br>Max. clamping force<br>kN (kgf) | 最高迴轉數<br>Max. speed<br>min <sup>-1</sup> (r.p.m.) | I<br>Moment of inertia<br>kg·m <sup>2</sup> | 重量<br>Weight<br>kg | 使用筒夾<br>Matching steel collet | 適用迴轉缸<br>Matching Cyl. | 最大使用壓力<br>Max. pressure<br>MPa (kgf/cm <sup>2</sup> ) |
|-------------|------------------------------|----------------------------------|----------------------|--------------------|--------------------------------------|--|---|---|--------------------|-------------------------------|------------------------|---|
|             |                              | 圓棒<br>Round<br>mm                | 六角材<br>Hexagom<br>mm | 方材<br>Square<br>mm |                                      |  |   |   |                    |                               |                        |   |
| CL-26       | 4.5                          | 3~26                             | 4~22                 | 4~18               | 17.6(1800)                           | 37.9(3870)                               | 8000  | 0.040                                       | 4.3                | 161E                          | TK-A533                | 2.4(24)   |
| CL-30       | 4.5                          | 3~30                             | 4~26                 | 4~20               | 19.6(2000)                           | 42.1(4300)                               | 8000  | 0.038                                       | 4.2                | 163E                          | TK-A533                | 2.7(27)   |
| CL-36       | 6                            | 3~36                             | 6~32                 | 6~26               | 22.5(2300)                           | 48.5(4950)                               | 6000  | 0.062                                       | 7.0                | 171E                          | TK-C643                | 2.3(23)   |
| CL-42       | 6                            | 3~42                             | 6~36                 | 6~29               | 24.5(2500)                           | 52.9(5400)                               | 6000  | 0.060                                       | 6.9                | 173E                          | TK-C643                | 2.5(25)   |
| CL-52       | 6                            | 5~52                             | 8~45                 | 7~36               | 27.4(2800)                           | 59.0(6020)                               | 6000  | 0.101                                       | 14.3               | 177E                          | TK-A853                | 2.0(20)   |
| CL-6017     | 6                            | 5~60                             | 8~52                 | 7~42               | 29.4(3000)                           | 63.7(6500)                               | 5000  | 0.098                                       | 14.1               | 185E                          | TS-866                 | 1.8(18)   |
| CL-6022     | 6                            | 5~60                             | 8~52                 | 7~42               | 29.4(3000)                           | 63.7(6500)                               | 5000  | 0.126                                       | 16.3               | 185E                          | TS-866                 | 1.8(18)   |
| CL-80       | 6                            | 20~80                            | 18~69                | 15~56              | 34.3(3500)                           | 71.5(7300)                               | 4000  | 0.108                                       | 17.8               | 193E                          | TK-A1287               | 1.6(16)   |

### 外型尺寸 DIMENSIONS

| Model   | A   | A1  | B     | C(H6) | D     | E | E1 | F max. | F min. | G max. | G min. | H    | J  | K max.  | L        | L1 | M |
|---------|-----|-----|-------|-------|-------|---|----|--------|--------|--------|--------|------|----|---------|----------|----|---|
| CL-26   | 120 | 85  | 100   | 110   | 82.6  | 4 | 23 | 26     | 3      | 7      | 2.5    | 15   | 12 | M40x1.5 | 3~M10x25 | 16 | 4 |
| CL-30   | 120 | 85  | 100   | 110   | 82.6  | 4 | 23 | 30     | 3      | 7      | 2.5    | 15   | 12 | M40x1.5 | 3~M10x25 | 16 | 4 |
| CL-36   | 155 | 100 | 120   | 140   | 104.8 | 5 | 23 | 36     | 3      | 7      | 1      | 17.5 | 20 | M55x2   | 3~M10x25 | 18 | 4 |
| CL-42   | 155 | 100 | 120   | 140   | 104.8 | 5 | 23 | 42     | 3      | 7      | 1      | 17.5 | 20 | M55x2   | 3~M10x25 | 18 | 4 |
| CL-52   | 185 | 130 | 145.5 | 170   | 133.4 | 5 | 27 | 52     | 5      | 9      | 3      | 24   | 30 | M60x2   | 6~M12x30 | 20 | 5 |
| CL-6017 | 185 | 130 | 145.5 | 170   | 133.4 | 5 | 27 | 60     | 5      | 9      | 3      | 24   | 45 | M75x2   | 6~M12x30 | 20 | 5 |
| CL-6022 | 234 | 130 | 142   | 220   | 171.4 | 5 | 32 | 60     | 5      | 13     | 7      | 24   | 45 | M85x2   | 6~M16x30 | 20 | 5 |
| CL-80   | 234 | 156 | 163   | 220   | 171.4 | 5 | 32 | 80     | 20     | 15.5   | 9.5    | 22   | 45 | M100x2  | 6~M16x30 | 20 | 5 |



- 前推式彈性筒夾夾頭，適合CNC車床，專用機，或其他旋削機械。
- 高精度，高轉速及高剛性結構。
- 全面防水設計，防止切削水進入主軸通孔處。
- PUSH type collet used mainly on turning, CNC, special purpose machines, ect.
- High clamping accuracy, high speed and high rigidity.
- Sealed against swarf, chips and coolant.
- 搭配彈性筒夾須符合 DIN 6343 規範。
- The collet used must accord with DIN 6343.
- 專利產品字號 Patent numbers :  
台灣：PAT.NO.M380842(Taiwan)  
大陸：PAT.NO.ZL201020113762.X(China)



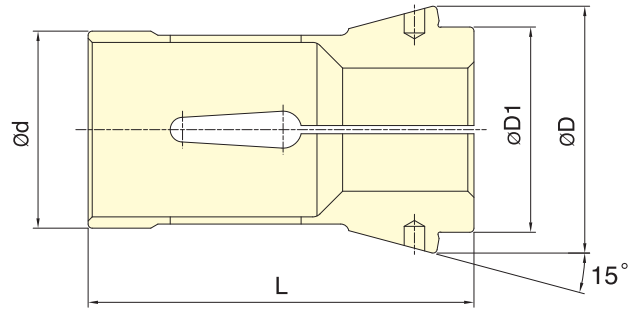
保留規格修改的權利  
Subject to technical changes

### 技術規格 SPECIFICATIONS

| 型號<br>Model | 套筒行程<br>Plunger stroke<br>mm | 最大夾持能力<br>Max. Chucking Capacity |                      |                    | 容許最大<br>入力<br>Max. D.B. pull<br>kN (kgf) | 最大夾持力<br>Max. clamping<br>force<br>kN (kgf) | 最高迴轉數<br>Max. speed<br>min <sup>-1</sup> (r.p.m.) | I<br>Moment<br>of inertia<br>kg·m <sup>2</sup> | 重量<br>Weight<br>kg | 使用筒夾<br>Matching steel<br>collet | 適用迴轉缸<br>Matching Cyl. | 最大使用<br>壓力<br>Max. pressure<br>MPa (kgf/cm <sup>2</sup> ) |         |
|-------------|------------------------------|----------------------------------|----------------------|--------------------|--|---|---|--|--------------------|----------------------------------|------------------------|---|---------|
|             |                              | 圓棒<br>Round<br>mm                | 六角材<br>Hexagom<br>mm | 方材<br>Square<br>mm |  |   |   |  |                    |                                  |                        |   |         |
| CL-26       | A4                           | 4.5                              | 3~26                 | 4~22               | 4~18                                     | 17.6(1800)                                  | 37.9(3870)  | 8000   | 0.040              | 4.2                              | 161E                   | TK-A533   | 2.4(24) |
| CL-30       | A4                           | 4.5                              | 3~30                 | 4~26               | 4~20                                     | 19.6(2000)                                  | 42.1(4300)  | 8000   | 0.038              | 4.1                              | 163E                   | TK-A533   | 2.7(27) |
| CL-36       | A5                           | 6                                | 3~36                 | 6~32               | 6~26                                     | 22.5(2300)                                  | 48.5(4950)  | 6000   | 0.058              | 6.3                              | 171E                   | TK-C643   | 2.3(23) |
| CL-42       | A5                           | 6                                | 3~42                 | 6~36               | 6~29                                     | 24.5(2500)                                  | 52.9(5400)  | 6000   | 0.057              | 6.1                              | 173E                   | TK-C643   | 2.5(25) |
| CL-42       | A6                           | 6                                | 3~42                 | 6~36               | 6~29                                     | 24.5(2500)                                  | 52.9(5400)  | 6000   | 0.061              | 7.5                              | 173E                   | TK-C643   | 2.5(25) |
| CL-52       | A6                           | 6                                | 5~52                 | 8~45               | 7~36                                     | 27.4(2800)                                  | 59.0(6020)  | 6000   | 0.093              | 13.8                             | 177E                   | TK-A853   | 2.0(20) |
| CL-60       | A6                           | 6                                | 5~60                 | 8~52               | 7~42                                     | 29.4(3000)                                  | 63.7(6500)  | 5000   | 0.091              | 13.5                             | 185E                   | TS-866  | 1.8(18) |
| CL-60       | A8                           | 6                                | 5~60                 | 8~52               | 7~42                                     | 29.4(3000)                                  | 63.7(6500)  | 5000   | 0.104              | 14.5                             | 185E                   | TS-866  | 1.8(18) |
| CL-80       | A8                           | 6                                | 20~80                | 18~69              | 15~56                                    | 34.3(3500)                                  | 71.5(7300)  | 4000   | 0.120              | 19.8                             | 193E                   | TK-A1287  | 1.6(16) |

### 外型尺寸 DIMENSIONS

| Model | A  | A1  | B   | D     | D1    | E      | F max. | F min. | G max. | G min. | H    | J    | K max. | L       | L1       | M  |   |
|-------|----|-----|-----|-------|-------|--------|--------|--------|--------|--------|------|------|--------|---------|----------|----|---|
| CL-26 | A4 | 110 | 85  | 108   | 82.6  | 63.51  | 25     | 26     | 3      | 9.5    | 5    | 15   | 12     | M40x1.5 | 3~M10x30 | 15 | 4 |
| CL-30 | A4 | 110 | 85  | 108   | 82.6  | 63.51  | 25     | 30     | 3      | 9.5    | 5    | 15   | 12     | M40x1.5 | 3~M10x30 | 15 | 4 |
| CL-36 | A5 | 135 | 100 | 130   | 104.8 | 82.56  | 27     | 36     | 3      | 14     | 8    | 17.5 | 20     | M55x2   | 4~M10x30 | 14 | 4 |
| CL-42 | A5 | 135 | 100 | 130   | 104.8 | 82.56  | 27     | 42     | 3      | 14     | 8    | 17.5 | 20     | M55x2   | 4~M10x30 | 14 | 4 |
| CL-42 | A6 | 165 | 100 | 130   | 133.4 | 106.38 | 32     | 42     | 3      | 15     | 9    | 17.5 | 20     | M60x2   | 4~M12x35 | 16 | 4 |
| CL-52 | A6 | 170 | 130 | 154   | 133.4 | 106.38 | 27     | 52     | 5      | 10.5   | 4.5  | 24   | 45     | M60x2   | 4~M12x35 | 20 | 5 |
| CL-60 | A6 | 170 | 130 | 154   | 133.4 | 106.38 | 27     | 60     | 5      | 10.5   | 4.5  | 24   | 45     | M75x2   | 4~M12x35 | 20 | 5 |
| CL-60 | A8 | 210 | 130 | 147.5 | 171.4 | 139.72 | 35     | 60     | 5      | 3.5    | -2.5 | 24   | 45     | M85x2   | 4~M16x40 | 22 | 5 |
| CL-80 | A8 | 210 | 156 | 175   | 171.4 | 139.72 | 35     | 80     | 20     | 7.5    | 1.5  | 22   | 45     | M100x2  | 6~M16x40 | 22 | 5 |



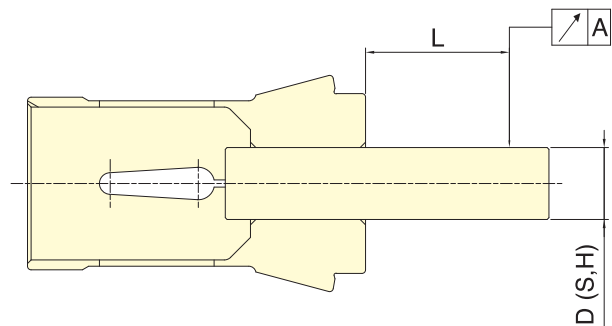
DIN 6343 Collet standard  
筒夾規範

保留規格修改的權利  
Subject to technical changes

外型尺寸 DIMENSIONS

| 彈性筒夾<br>Collet | 最大夾持能力<br>Max. Chucking Capacity (mm) |                |              | d  | D   | D1 | L   | 適合筒夾夾頭                             |
|----------------|---------------------------------------|----------------|--------------|----|-----|----|-----|------------------------------------|
|                | 圓棒<br>Round                           | 六角材<br>Hexagom | 方材<br>Square |    |     |    |     | Matching Collet Chuck              |
| 161E           | 3~26                                  | 4~22           | 4~18         | 32 | 45  | 34 | 75  | CL-26, CL-26A4                     |
| 163E           | 3~30                                  | 4~26           | 4~20         | 35 | 48  | 38 | 80  | CL-30, CL-30A4                     |
| 171E           | 3~36                                  | 6~32           | 6~26         | 42 | 55  | 42 | 94  | CL-36, CL-36A5                     |
| 173E           | 3~42                                  | 6~36           | 6~29         | 48 | 60  | 50 | 94  | CL-42, CL-42A5, CL-42A6            |
| 177E           | 5~52                                  | 8~45           | 7~36         | 58 | 70  | 60 | 94  | CL-52, CL-52A6                     |
| 185E           | 5~60                                  | 8~52           | 7~42         | 66 | 84  | 73 | 110 | CL-6017, CL-6022, CL-60A6, CL-60A8 |
| 193E           | 20~80                                 | 18~69          | 15~56        | 90 | 107 | 92 | 130 | CL-80, CL-80A8                     |

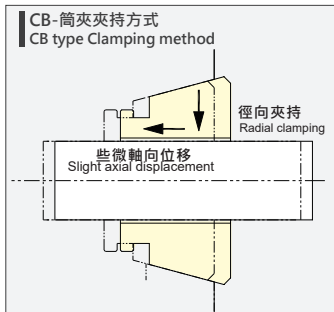
| 測棒D(S,H)  | L mm | A DIN   |         |
|-----------|------|---------|---------|
|           |      | Class 1 | Class 2 |
| 0.5~1.0   | 3    | 0.015   | 0.015   |
| 1.0~1.6   | 6    | 0.015   | 0.020   |
| 1.6~3.0   | 10   | 0.015   | 0.020   |
| 3.0~6.0   | 16   | 0.015   | 0.020   |
| 6.0~10.0  | 25   | 0.015   | 0.020   |
| 10.0~18.0 | 40   | 0.020   | 0.030   |
| 18.0~24.0 | 50   | 0.020   | 0.030   |
| 24.0~30.0 | 60   | 0.020   | 0.030   |
| 30.0~50.0 | 80   | 0.030   | 0.040   |
| 50.0~60.0 | 100  | 0.030   | 0.040   |



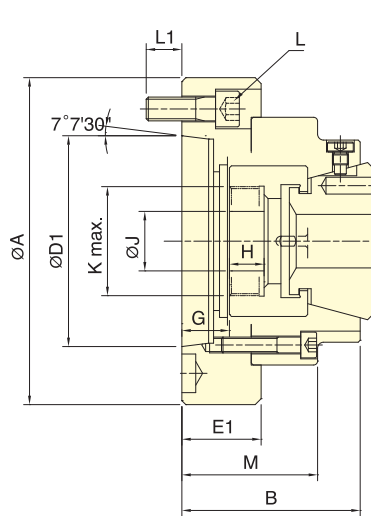
註：一般內筒夾 精度為 DIN 二級  
Note: Collets chuck are conformed to DIN 6343 Class2.



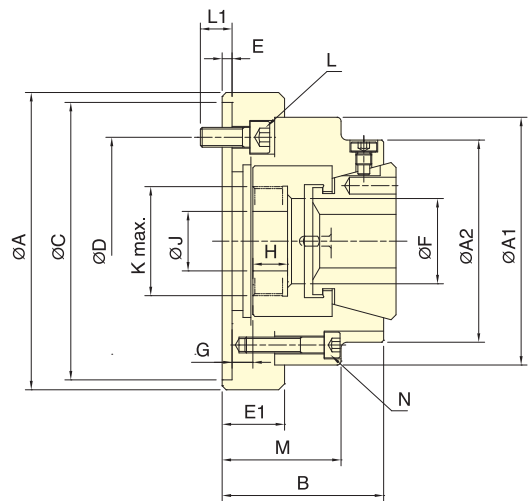
- 適合CNC車床·專用機·或其他旋削機械·作棒材或心軸加工用。
- 後拉夾持·具徑向夾持與軸向微調力矩·貫通孔徑。
- 高精度·高轉速及高剛性結構。
- 全面防水設計·防止切削水進入主軸通孔處。
- Ideal for CNC lathes, specialized machines, and turning equipment for bar stock or shaft machining.
- Draw-back clamping with radial clamping and axial fine-tuning torque, featuring through-hole.
- Offers high precision, speed, and rigidity.
- Features a comprehensive waterproof design to prevent cutting fluid from entering the spindle through-hole.
- J 值為連結螺帽未車製螺牙時的孔徑。  
K max 值為連結螺帽可車製螺牙之最大規格·可依實際需求訂製。
- J is the hole diameter of blank draw nut.  
K is the maximum thread specification and it could be customize.



夾緊時, 工件隨著筒夾稍微往後位移。  
During clamping, the workpiece shifts slightly backward along with the collet.



CB-A



CB

保留規格修改的權利  
Subject to technical changes

### 技術規格 SPECIFICATIONS

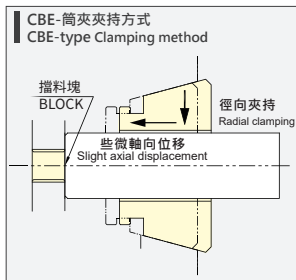
| 型號<br>Model | 套筒行程<br>Plunger stroke<br>mm | 最大夾持能力<br>Max. Chucking Capacity |                      |                    |            | 容許最大入力<br>Max. D.B. pull<br>kN (kgf) | 最大夾持力<br>Max. clamping force<br>kN (kgf) | 最高迴轉數<br>Max. speed<br>min <sup>-1</sup> (r.p.m.) | 重量<br>Weight<br>kg | 使用筒夾<br>Matching steel collet | 適用迴轉缸<br>Matching Cyl. | 最大使用壓力<br>Max. pressure<br>MPa (kgf/cm <sup>2</sup> ) |
|-------------|------------------------------|----------------------------------|----------------------|--------------------|------------|--------------------------------------|--|---|--------------------|-------------------------------|------------------------|---|
|             |                              | 圓棒材<br>Round<br>mm               | 六角材<br>Hexagom<br>mm | 方材<br>Square<br>mm |            |                                      |  |   |                    |                               |                        |   |
| CB-42       | 4.5                          | 4~42                             | 7~36                 | 7~30               | 34.3(3500) | 78.4(8000)                           | 7000                                     | 6.5   | RG-42              | TK-B846                       | 2.8(28)                |   |
| CB-42 A5    | 4.5                          | 4~42                             | 7~36                 | 7~30               | 34.3(3500) | 78.4(8000)                           | 7000                                     | 6.2   | RG-42              | TK-B846                       | 2.8(28)                |   |
| CB-42 A6    | 4.5                          | 4~42                             | 7~36                 | 7~30               | 34.3(3500) | 78.4(8000)                           | 7000                                     | 7.4   | RG-42              | TK-B846                       | 2.8(28)                |   |
| CB-52       | 4.5                          | 4~52                             | 7~36                 | 7~45               | 39.2(4000) | 92.1(9400)                           | 7000                                     | 6   | RG-52              | TK-A853                       | 3.2(32)                |   |
| CB-5217     | 4.5                          | 4~52                             | 7~36                 | 7~45               | 39.2(4000) | 92.1(9400)                           | 7000                                     | 9.6   | RG-52              | TK-A853                       | 3.2(32)                |   |
| CB-52 A5    | 4.5                          | 4~52                             | 7~36                 | 7~45               | 39.2(4000) | 92.1(9400)                           | 7000                                     | 6.5   | RG-52              | TK-A853                       | 3.2(32)                |   |
| CB-52 A6    | 4.5                          | 4~52                             | 7~36                 | 7~45               | 39.2(4000) | 92.1(9400)                           | 7000                                     | 7.8   | RG-52              | TK-A853                       | 3.2(32)                |   |
| CB-65       | 4.5                          | 4~65                             | 8~56                 | 8~46               | 44.1(4500) | 103(10500)                           | 5500                                     | 15  | RG-65              | TS-866                        | 3.0(30)                |   |
| CB-65 A6    | 4.5                          | 4~65                             | 8~56                 | 8~46               | 44.1(4500) | 103(10500)                           | 5500                                     | 13.6  | RG-65              | TS-866                        | 3.0(30)                |   |
| CB-65 A8    | 4.5                          | 4~65                             | 8~56                 | 8~46               | 44.1(4500) | 103(10500)                           | 5500                                     | 17.6  | RG-65              | TS-866                        | 3.0(30)                |   |
| CB-80       | 4.5                          | 5~80                             | 8~68                 | 8~56               | 50.0(5100) | 115(11730)                           | 5500                                     | 19  | RG-80              | TK-A1287                      | 2.3(23)                |   |
| CB-80 A8    | 4.5                          | 5~80                             | 8~68                 | 8~56               | 50.0(5100) | 115(11730)                           | 5500                                     | 19  | RG-80              | TK-A1287                      | 2.3(23)                |   |

### 外型尺寸 DIMENSIONS

| Model    | A   | A1  | A2  | B    | C(H6) | D     | D1     | E | E1   | F    | G max. | G min. | H    | J  | K max. | L        | L1 | M    | N     |
|----------|-----|-----|-----|------|-------|-------|--------|---|------|------|--------|--------|------|----|--------|----------|----|------|-------|
| CB-42    | 150 | 125 | 102 | 81.5 | 140   | 104.8 | -      | 5 | 31   | 43   | 10.5   | 6      | 17.5 | 30 | M55x2  | 3~M10x25 | 11 | 60   | 4~M8  |
| CB-42 A5 | 140 | 125 | 102 | 91.5 | -     | 104.8 | 82.56  | - | 41.5 | 43   | 25.5   | 21     | 17.5 | 30 | M55x2  | 4~M10x25 | 12 | 70   | 4~M8  |
| CB-42 A6 | 165 | 125 | 102 | 91.5 | -     | 133.4 | 106.38 | - | 45   | 43   | 29     | 24.5   | 17.5 | 30 | M55x2  | 4~M12x35 | 18 | 73.5 | 4~M8  |
| CB-52    | 150 | 125 | 102 | 83.5 | 140   | 104.8 | -      | 5 | 31.5 | 53   | 11     | 6.5    | 17.5 | 30 | M60x2  | 4~M10x25 | 16 | 62.5 | 4~M8  |
| CB-5217  | 180 | 125 | 102 | 87   | 170   | 133.4 | -      | 5 | 35   | 53   | 14.5   | 10     | 17.5 | 30 | M60x2  | 4~M12x30 | 18 | 66   | 4~M8  |
| CB-52 A5 | 140 | 125 | 102 | 93.5 | -     | 104.8 | 82.56  | - | 41.5 | 53   | 26     | 21.5   | 17.5 | 30 | M60x2  | 4~M10x30 | 16 | 72.5 | 4~M8  |
| CB-52 A6 | 165 | 125 | 102 | 99   | -     | 133.4 | 106.38 | - | 47   | 53   | 31.5   | 27     | 17.5 | 30 | M60x2  | 6~M12x35 | 18 | 78   | 4~M8  |
| CB-65    | 185 | 145 | 120 | 100  | 170   | 133.4 | -      | 6 | 50   | 66   | 13.5   | 9      | 21.5 | 32 | M75x2  | 6~M12x40 | 20 | 73.5 | 4~M8  |
| CB-65 A6 | 165 | 145 | 120 | 111  | -     | 133.4 | 106.38 | - | 61   | 66   | 30.5   | 26     | 21.5 | 32 | M75x2  | 4~M12x40 | 20 | 84.5 | 4~M8  |
| CB-65 A8 | 207 | 145 | 120 | 107  | -     | 171.4 | 139.72 | - | 57   | 66   | 26.5   | 22     | 21.5 | 32 | M75x2  | 4~M16x40 | 24 | 80.5 | 4~M8  |
| CB-80    | 235 | 175 | 150 | 112  | 220   | 171.4 | -      | 5 | 37   | 82.5 | 13.5   | 8      | 25   | 45 | M85x2  | 6~M16x30 | 22 | 87   | 6~M10 |
| CB-80 A8 | 210 | 175 | 150 | 125  | -     | 171.4 | 139.72 | - | 50   | 82.5 | 26.5   | 21     | 25   | 45 | M85x2  | 6~M16x50 | 24 | 100  | 6~M10 |

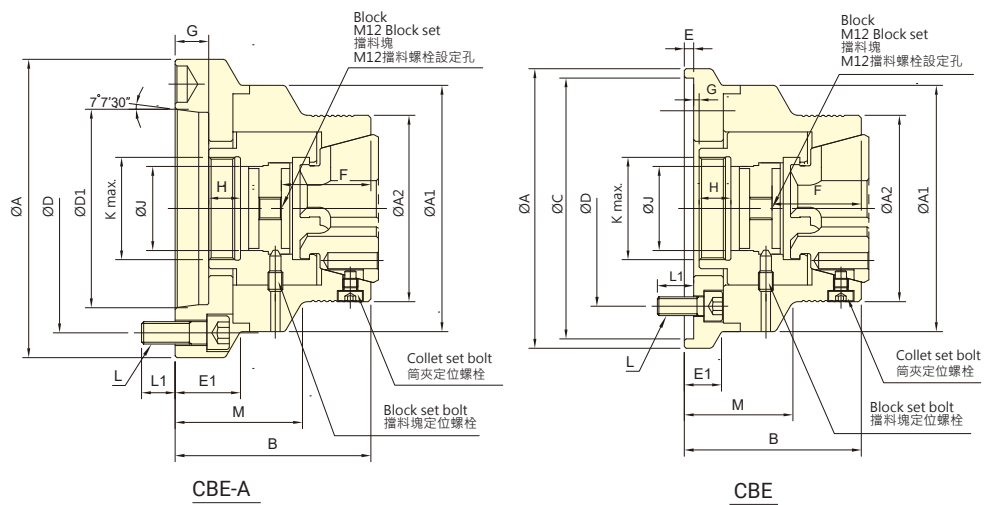


- 後拉定位夾持，配合擋料塊機構，具徑向夾持與軸向微調力矩，可精準定位工件入料長度，使長度精度控制更加精準。
- 擋料塊與防塵蓋可互換搭配使用，應用與防屑功能可以兼顧。
- The pull-back positioning clamping, combined with the workpiece stop block mechanism, features radial clamping and axial fine-tuning torque, enabling precise positioning of the workpiece feeding length for enhanced length accuracy control.
- The blocking block and dust cover can be swapped for versatile use and chip protection.
- J 值為連結螺帽末車製螺牙時的孔徑。
- K max 值為連結螺帽可車製螺牙之最大規格，可依實際需求訂製。
- J is the hole diameter of blank draw nut.
- K is the maximum thread specification and it could be customize.



配合擋料機構，夾緊時，工件不會往後位移，表面會有些許擦痕。  
With the material stop mechanism in place, the workpiece does not shift backward during clamping, although there may be slight scuff marks on the surface.

保留規格修改的權利  
Subject to technical changes



### 技術規格 SPECIFICATIONS

| 型號<br>Model | 套筒行程<br>Plunger stroke<br>mm | 最大夾持能力<br>Max. Chucking Capacity |                      |                    | 容許最大入力<br>Max. D.B. pull<br>kN (kgf) | 最大夾持力<br>Max. clamping force<br>kN (kgf) | 最高迴轉數<br>Max. speed<br>min <sup>-1</sup> (r.p.m.) | 重量<br>Weight<br>kg | 使用筒夾<br>Matching steel collet | 適用迴轉缸<br>Matching Cyl. | 最大使用壓力<br>Max. pressure<br>MPa (kgf/cm <sup>2</sup> ) |
|-------------|------------------------------|----------------------------------|----------------------|--------------------|--------------------------------------|--|---|--------------------|-------------------------------|------------------------|---|
|             |                              | 圓棒<br>Round<br>mm                | 六角材<br>Hexagom<br>mm | 方材<br>Square<br>mm |                                      |  |   |                    |                               |                        |   |
| CBE-42      | 4.5                          | 4~42                             | 7~36                 | 7~30               | 34.3(3500)                           | 78.4(8000)                               | 7000  | 6                  | RG-42                         | TK-B846                | 2.8(28)   |
| CBE-4212    | 4.5                          | 4~42                             | 7~36                 | 7~30               | 34.3(3500)                           | 78.4(8000)                               | 7000  | 6                  | RG-42                         | TK-B846                | 2.8(28)   |
| CBE-42 A5   | 4.5                          | 4~42                             | 7~36                 | 7~30               | 34.3(3500)                           | 78.4(8000)                               | 7000  | 6.3                | RG-42                         | TK-B846                | 2.8(28)   |
| CBE-42 A6   | 4.5                          | 4~42                             | 7~36                 | 7~30               | 34.3(3500)                           | 78.4(8000)                               | 7000  | 7.4                | RG-42                         | TK-B846                | 2.8(28)   |
| CBE-52      | 4.5                          | 4~52                             | 7~36                 | 7~30               | 39.2(4000)                           | 92.1(9400)                               | 7000  | 6.9                | RG-52                         | TK-A853                | 3.2(32)   |
| CBE-5212    | 4.5                          | 4~52                             | 7~36                 | 7~30               | 39.2(4000)                           | 92.1(9400)                               | 7000  | 6.7                | RG-52                         | TK-A853                | 3.2(32)   |
| CBE-5217    | 4.5                          | 4~52                             | 7~36                 | 7~30               | 39.2(4000)                           | 92.1(9400)                               | 7000  | 8.9                | RG-52                         | TK-A853                | 3.2(32)   |
| CBE-52 A5   | 4.5                          | 4~52                             | 7~36                 | 7~30               | 39.2(4000)                           | 92.1(9400)                               | 7000  | 7.8                | RG-52                         | TK-A853                | 3.2(32)   |
| CBE-52 A6   | 4.5                          | 4~52                             | 7~36                 | 7~30               | 39.2(4000)                           | 92.1(9400)                               | 7000  | 8.3                | RG-52                         | TK-A853                | 3.2(32)   |
| CBE-65      | 4.5                          | 4~65                             | 8~56                 | 8~46               | 44.1(4500)                           | 103(10500)                               | 6000  | 8.6                | RG-65                         | TS-866                 | 3.0(30)   |
| CBE-6514    | 4.5                          | 4~65                             | 8~56                 | 8~46               | 44.1(4500)                           | 103(10500)                               | 6000  | 9.3                | RG-65                         | TS-866                 | 3.0(30)   |
| CBE-65 A5   | 4.5                          | 4~65                             | 8~56                 | 8~46               | 44.1(4500)                           | 103(10500)                               | 6000  | 10.8               | RG-65                         | TS-866                 | 3.0(30)   |
| CBE-65 A6   | 4.5                          | 4~65                             | 8~56                 | 8~46               | 44.1(4500)                           | 103(10500)                               | 6000  | 9.5                | RG-65                         | TS-866                 | 3.0(30)   |
| CBE-65 A8   | 4.5                          | 4~65                             | 8~56                 | 8~46               | 44.1(4500)                           | 103(10500)                               | 6000  | 9.5                | RG-65                         | TS-866                 | 3.0(30)   |

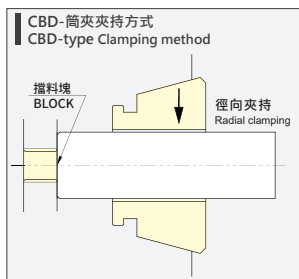
### 外型尺寸 DIMENSIONS

| Model     | A   | A1  | A2  | B   | C (H6) | D     | D1     | E | E1 | F  | G max. | G min. | H    | J  | K max. | L        | L1   | M  |
|-----------|-----|-----|-----|-----|--------|-------|--------|---|----|----|--------|--------|------|----|--------|----------|------|----|
| CBE-42    | 150 | 132 | 100 | 95  | 140    | 104.8 | -      | 5 | 20 | 48 | 5.5    | 1      | 17   | 45 | M55x2  | 4~M10x25 | 19.5 | 58 |
| CBE-4212  | 132 | 132 | 100 | 95  | 120    | 100   | -      | 5 | -  | 48 | 5.5    | 1      | 17   | 45 | M55x2  | 4~M10x25 | 19.5 | 58 |
| CBE-42 A5 | 132 | 132 | 100 | 105 | -      | 104.8 | 82.56  | - | -  | 48 | 20.5   | 16     | 17   | 45 | M55x2  | 4~M10x30 | 16   | 68 |
| CBE-42 A6 | 160 | 132 | 100 | 105 | -      | 133.4 | 106.38 | - | 35 | 48 | 20.5   | 16     | 17   | 45 | M55x2  | 4~M12x35 | 18   | 68 |
| CBE-52    | 150 | 140 | 107 | 99  | 140    | 104.8 | -      | 5 | -  | 52 | 5.5    | 1      | 17   | 56 | M60x2  | 4~M10x20 | 14.5 | 60 |
| CBE-5212  | 140 | 140 | 107 | 99  | 120    | 100   | -      | 5 | -  | 52 | 5.5    | 1      | 17   | 56 | M60x2  | 4~M10x20 | 14.5 | 60 |
| CBE-5217  | 180 | 140 | 107 | 109 | 170    | 133.4 | -      | 6 | -  | 52 | 14.5   | 10     | 17   | 56 | M60x2  | 4~M12x30 | 18   | 70 |
| CBE-52 A5 | 140 | 140 | 107 | 109 | -      | 104.8 | 82.56  | - | -  | 52 | 20.5   | 16     | 17   | 56 | M60x2  | 4~M10x30 | 16   | 70 |
| CBE-52 A6 | 160 | 140 | 107 | 109 | -      | 133.4 | 106.37 | - | -  | 52 | 20.5   | 16     | 17   | 56 | M60x2  | 4~M12x35 | 18   | 70 |
| CBE-65    | 180 | 157 | 122 | 114 | 170    | 133.4 | -      | 6 | 24 | 56 | 15     | 10.5   | 17.5 | 68 | M75x2  | 4~M12x30 | 18   | 72 |
| CBE-6514  | 157 | 157 | 122 | 116 | 140    | 104.8 | -      | 6 | -  | 56 | 17     | 12.5   | 17.5 | 68 | M75x2  | 4~M10x30 | 18   | 74 |
| CBE-65 A5 | 157 | 157 | 122 | 114 | -      | 104.8 | 82.56  | - | -  | 56 | 21     | 16.5   | 17.5 | 68 | M75x2  | 4~M10x25 | 16   | 72 |
| CBE-65 A6 | 157 | 157 | 122 | 112 | -      | 133.4 | 106.38 | - | -  | 56 | 19     | 14.5   | 17.5 | 68 | M75x2  | 4~M12x35 | 18.5 | 70 |
| CBE-65 A8 | 202 | 157 | 122 | 116 | -      | 171.4 | 139.72 | - | 38 | 56 | 23     | 18.5   | 17.5 | 68 | M75x2  | 4~M16x35 | 24   | 74 |

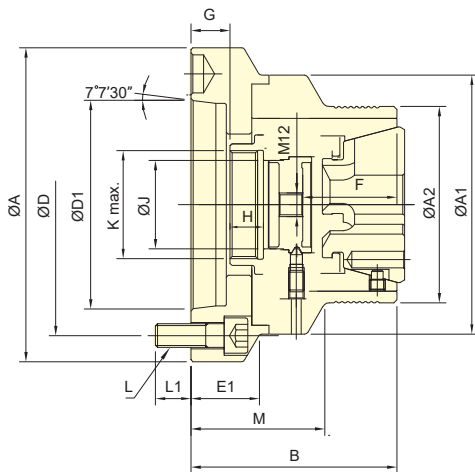


筒夾夾頭

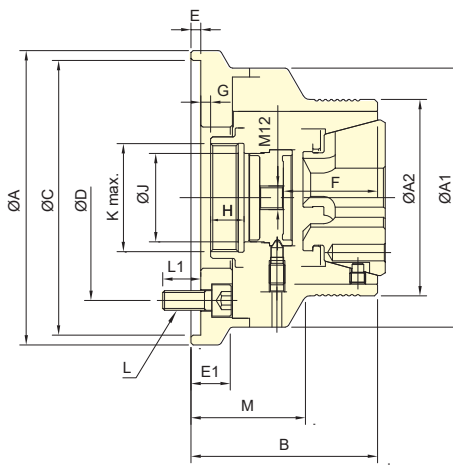
- 前推夾持，搭配擋料塊機構，具徑向夾持徑向零移位，可精準定位工件入料長度，使長度精度控制更加精準。
- 搭配AUTOGRIP橡膠筒夾，不會產生一般彈性筒夾將工件往前推的情況，可使工件表面不受損。
- 擋料塊與防塵蓋可互換搭配使用，通孔應用與防屑功能可以兼顧，適合副主軸夾持，可減少夾持的拉壓力現象。
- The push-forward clamping, combined with a stop block mechanism, features radial clamping with zero radial displacement, enabling precise positioning of the workpiece feeding length for improved length accuracy control.
- AUTOGRIP rubber tube clamping eliminates forward pushing, minimizing surface damage.
- Interchangeable workpiece stopper and dust cover enable through-hole applications and chip protection, suitable for sub-spindle clamping, reducing tension and compression.
- J 值為連結螺帽未車製螺牙時的孔徑。  
K max 值為連結螺帽可車製螺牙之最大規格，可依實際需求訂製。
- J is the hole diameter of blank draw nut.  
K is the maximum thread specification and it could be customize.



夾緊時，工件不會往前位移。  
When clamping, the workpiece does not shift forward.



CBD-A



CBD

保留規格修改的權利  
Subject to technical changes

### 技術規格 SPECIFICATIONS

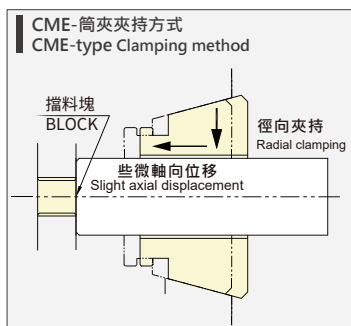
| 型號<br>Model | 套筒行程<br>Plunger stroke<br>mm | 最大夾持能力<br>Max. Chucking Capacity |                      |                    | 容許最大入力<br>Max. D.B. pull<br>kN (kgf) | 最大夾持力<br>Max. clamping force<br>kN (kgf) | 最高迴轉數<br>Max. speed<br>min <sup>-1</sup> (r.p.m.) | 重量<br>Weight<br>kg | 使用筒夾<br>Matching steel collet | 適用迴轉缸<br>Matching Cyl. | 最大使用壓力<br>Max. pressure<br>MPa (kgf/cm <sup>2</sup> ) |         |
|-------------|------------------------------|----------------------------------|----------------------|--------------------|--------------------------------------|--|---|--------------------|-------------------------------|------------------------|---|---------|
|             |                              | 圓棒<br>Round<br>mm                | 六角材<br>Hexagom<br>mm | 方材<br>Square<br>mm |                                      |  |   |                    |                               |                        |   |         |
| CBD-52      | 4.5                          | 4~52                             | 7~36                 | 7~45               | 39.2(4000)                           | 92.1(9400)                               | 7000  | 7.3                | RG-52                         | TK-A853                | 3.0(30)   |         |
| CBD-5212    | 4.5                          | 4~52                             | 7~36                 | 7~45               | 39.2(4000)                           | 92.1(9400)                               | 7000  | 7.1                | RG-52                         | TK-A853                | 3.0(30)   |         |
| CBD-5217    | 4.5                          | 4~52                             | 7~36                 | 7~45               | 39.2(4000)                           | 92.1(9400)                               | 7000  | 10.9               | RG-52                         | TK-A853                | 3.0(30)   |         |
| CBD-52      | A5                           | 4.5                              | 4~52                 | 7~36               | 7~45                                 | 39.2(4000)                               | 92.1(9400)  | 7000               | 7.8                           | RG-52                  | TK-A853   | 3.0(30) |
| CBD-52      | A6                           | 4.5                              | 4~52                 | 7~36               | 7~45                                 | 39.2(4000)                               | 92.1(9400)  | 7000               | 9.1                           | RG-52                  | TK-A853   | 3.0(30) |
| CBD-65      | 4.5                          | 4~65                             | 8~56                 | 8~46               | 44.1(4500)                           | 103(10500)                               | 6000  | 8.6                | RG-65                         | TS-866                 | 2.7(27)   |         |
| CBD-6514    | 4.5                          | 4~65                             | 8~56                 | 8~46               | 44.1(4500)                           | 103(10500)                               | 6000  | 9.3                | RG-65                         | TS-866                 | 2.7(27)   |         |
| CBD-65      | A5                           | 4.5                              | 4~65                 | 8~56               | 8~46                                 | 44.1(4500)                               | 103(10500)  | 6000               | 10.8                          | RG-65                  | TS-866  | 2.7(27) |
| CBD-65      | A6                           | 4.5                              | 4~65                 | 8~56               | 8~46                                 | 44.1(4500)                               | 103(10500)  | 6000               | 9.5                           | RG-65                  | TS-866  | 2.7(27) |
| CBD-65      | A8                           | 4.5                              | 4~65                 | 8~56               | 8~46                                 | 44.1(4500)                               | 103(10500)  | 6000               | 9.5                           | RG-65                  | TS-866  | 2.7(27) |

### 外型尺寸 DIMENSIONS

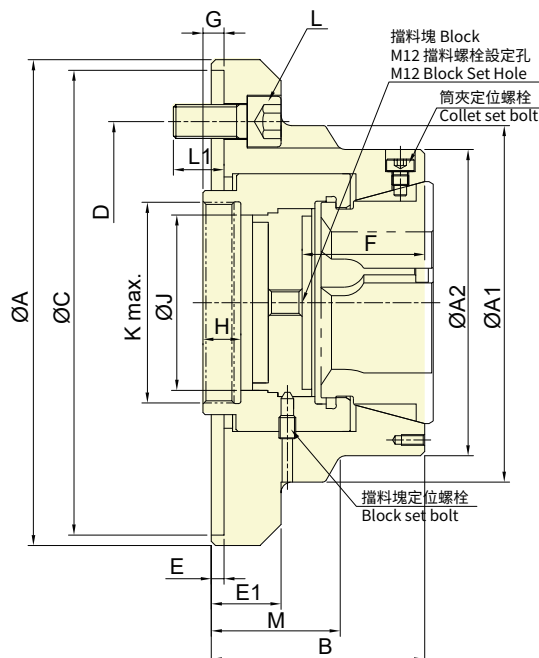
| Model    | A   | A1  | A2  | B   | C (H6) | D     | D1     | E | E1 | F  | G max. | G min. | H    | J  | K max. | L        | L1   | M  |
|----------|-----|-----|-----|-----|--------|-------|--------|---|----|----|--------|--------|------|----|--------|----------|------|----|
| CBD-52   | 150 | 140 | 116 | 99  | 140    | 104.8 | -      | 5 | -  | 52 | 7      | 2.5    | 17   | 56 | M60x2  | 4~M10x20 | 14.5 | 57 |
| CBD-5212 | 140 | 140 | 116 | 99  | 120    | 100   | -      | 5 | -  | 52 | 7      | 2.5    | 17   | 56 | M60x2  | 4~M10x20 | 14.5 | 57 |
| CBD-5217 | 180 | 140 | 116 | 109 | 170    | 133.4 | -      | 6 | -  | 52 | 16     | 11.5   | 17   | 56 | M60x2  | 4~M12x30 | 18   | 67 |
| CBD-52   | A5  | 140 | 140 | 116 | 109    | 104.8 | 82.56  | - | -  | 52 | 22     | 17.5   | 17   | 56 | M60x2  | 4~M10x30 | 16   | 67 |
| CBD-52   | A6  | 160 | 140 | 116 | 109    | 133.4 | 106.38 | - | -  | 52 | 22     | 17.5   | 17   | 56 | M60x2  | 4~M12x35 | 18   | 67 |
| CBD-65   | 180 | 157 | 132 | 112 | 170    | 133.4 | -      | 6 | 24 | 54 | 15.5   | 11     | 17.5 | 68 | M75x2  | 4~M12x30 | 18   | 70 |
| CBD-6514 | 157 | 157 | 132 | 114 | 140    | 104.8 | -      | 6 | -  | 54 | 17.5   | 13     | 17.5 | 68 | M75x2  | 4~M10x30 | 18   | 72 |
| CBD-65   | A5  | 157 | 157 | 132 | 112    | 104.8 | 82.56  | - | -  | 54 | 21.5   | 17     | 17.5 | 68 | M75x2  | 4~M10x25 | 16   | 70 |
| CBD-65   | A6  | 157 | 157 | 132 | 110    | 133.4 | 106.38 | - | -  | 54 | 19.5   | 15     | 17.5 | 68 | M75x2  | 4~M12x35 | 18.5 | 68 |
| CBD-65   | A8  | 202 | 157 | 132 | 114    | 171.4 | 139.72 | - | 38 | 54 | 23.5   | 19     | 17.5 | 68 | M75x2  | 4~M16x35 | 24   | 72 |



- 簡易、精短、輕量化設計。
- 採後拉定位夾持，搭配擋料塊機構，具備徑向夾持及軸向微調力矩功能，可精準定位工件入料長度，提升長度精度控制。
- 擋料塊與防塵蓋可互換使用，同時兼顧通孔加工需求與防屑功能。
- Simple, concise, and lightweight design.
- Rear pull positioning clamping, with a stopper block mechanism. Equipped with radial clamping and axial fine-tuning torque, it can precisely position the workpiece's material entry length, ensuring more accurate length control.
- The stopper block and dust cover can be interchanged, allowing for through-hole applications and dustproof functionality.
- J 值為連結螺帽未車製螺牙時的孔徑。
- K max 值為連結螺帽可車製螺牙之最大規格，可依實際需求訂製。
- J is the hole diameter of blank draw nut.
- K is the maximum thread specification and it could be customize.



配合擋料機構，夾緊時，工件不會往後位移，表面會有些許擦痕。  
With the material stop mechanism in place, the workpiece does not shift backward during clamping, although there may be slight scuff marks on the surface.



保留規格修改的權利  
Subject to technical changes

### 技術規格 SPECIFICATIONS

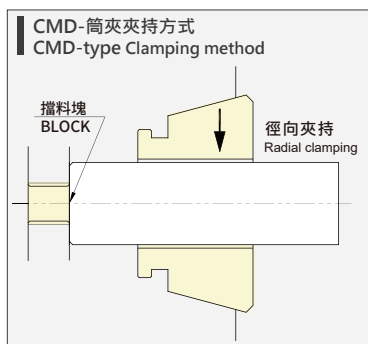
| 型號<br>Model   | 套筒行程<br>Plunger stroke<br>mm | 最大夾持能力<br>Max. Chucking Capacity |                      |                    | 容許最大入力<br>Max. D.B. pull<br>kN (kgf) | 最大夾持力<br>Max. clamping force<br>kN (kgf) | 最高迴轉數<br>Max. speed<br>min <sup>-1</sup> (r.p.m.) | 重量<br>Weight<br>kg | 使用筒夾<br>Matching steel collet<br>RG-80 | 適用迴轉缸<br>Matching Cyl.<br>TK-A1287 | 最大使用壓力<br>Max. pressure<br>MPa (kgf/cm <sup>2</sup> ) |
|---------------|------------------------------|----------------------------------|----------------------|--------------------|--------------------------------------|--|---|--------------------|--|------------------------------------|---|
|               |                              | 圓棒<br>Round<br>mm                | 六角材<br>Hexagom<br>mm | 方材<br>Square<br>mm |                                      |  |   |                    |  |                                    |   |
| <b>CME-80</b> | 4.5                          | 5~80                             | 8~68                 | 8~56               | 50.0(5100)                           | 115(11730)                               | 6500  | 13.6               | RG-80                                  | TK-A1287                           | 2.3(23)   |

### 外型尺寸 DIMENSIONS

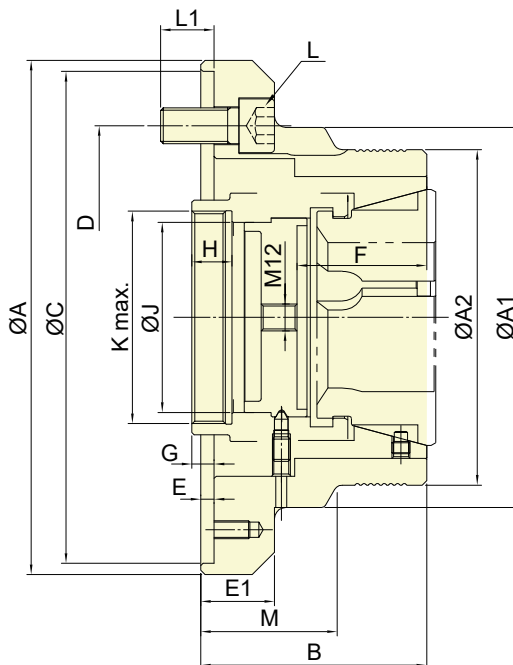
| Model         | A   | A1  | B   | C (H6) | D     | E | E1 | F  | G max. | G min. | H  | J  | K max. | L        | L1 | M  |
|---------------|-----|-----|-----|--------|-------|---|----|----|--------|--------|----|----|--------|----------|----|----|
| <b>CME-80</b> | 230 | 170 | 101 | 220    | 171.4 | 6 | 33 | 58 | 12     | 7.5    | 18 | 83 | M95x2  | 3~M16x35 | 24 | 61 |



- 精簡輕量設計，結構簡單。
- 前推夾持，搭配擋料塊機構，徑向夾持零位移，有效控制工件進給長度。
- 搭配AUTOGRIP橡膠筒夾，避免工件被推動，保護工件表面。
- 擋料塊與防塵蓋可互換，兼具通孔加工與防屑功能，適用於副主軸夾持，降低夾持拉壓力。
- Compact and lightweight design with simplified structure.
- Dead length clamping with a built-in work stop ensures zero axial movement for precise workpiece positioning.
- Compatible with AUTOGRIP rubber collets to prevent forward push and protect the workpiece surface.
- Interchangeable work stop and dust cover for through-hole machining and chip protection. Ideal for sub-spindle clamping with reduced axial clamping force.
- J 值為連結螺帽未車製螺牙時的孔徑。  
K max 值為連結螺帽可車製螺牙之最大規格，可依實際需求訂製。
- J is the hole diameter of blank draw nut.  
K is the maximum thread specification and it could be customize.



夾緊時，工件不會往前位移。  
When clamping, the workpiece does not shift forward.



保留規格修改的權利  
Subject to technical changes

### 技術規格 SPECIFICATIONS

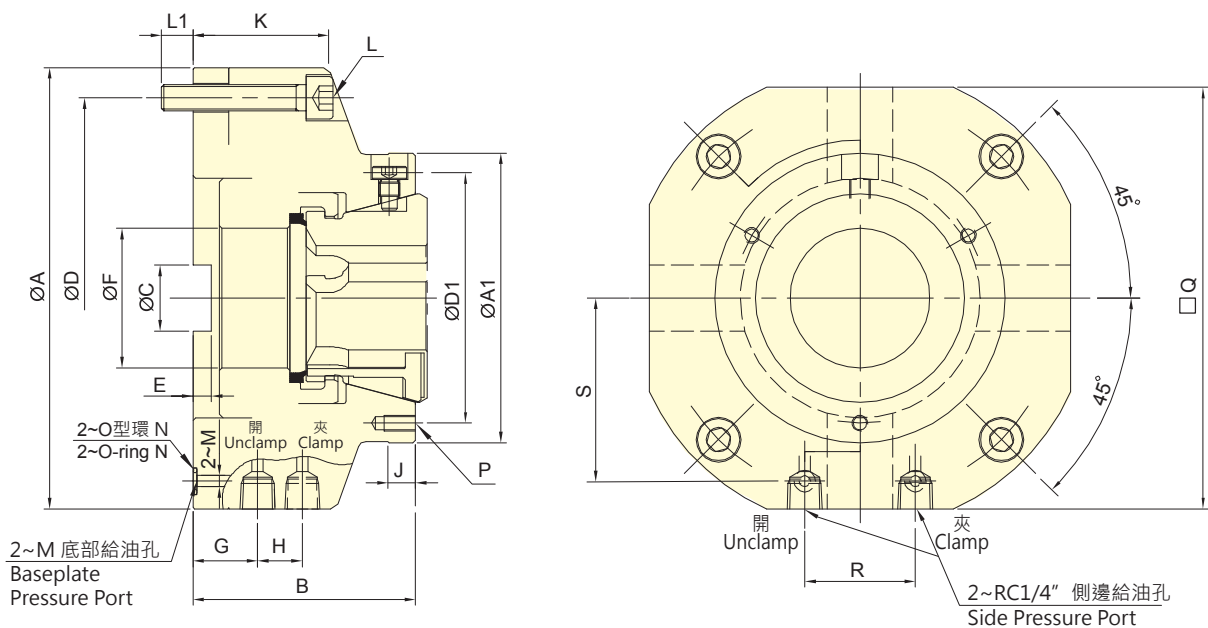
| 型號            | 套筒行程           | 最大夾持能力 |         |        | 容許最大入力         | 最大夾持力               | 最高迴轉數                      | 重量     | 使用筒夾                  | 適用迴轉缸         | 最大使用壓力                     |
|---------------|----------------|--------|---------|--------|----------------|---------------------|----------------------------|--------|-----------------------|---------------|----------------------------|
|               |                | 圓棒     | 六角材     | 方材     |                |                     |                            |        |                       |               |                            |
| Model         | Plunger stroke | Round  | Hexagom | Square | Max. D.B. pull | Max. clamping force | Max. speed                 | Weight | Matching steel collet | Matching Cyl. | Max. pressure              |
|               | mm             | mm     | mm      | mm     | kN (kgf)       | kN (kgf)            | min <sup>-1</sup> (r.p.m.) | kg     |                       |               | MPa (kgf/cm <sup>2</sup> ) |
| <b>CMD-80</b> | 4.5            | 5~80   | 8~68    | 8~56   | 50.0(5100)     | 115(11730)          | 6500                       | 13.6   | RG-80                 | TK-A1287      | 2.3(23)                    |

### 外型尺寸 DIMENSIONS

| Model         | A   | A1  | A2  | B   | C (H6) | D     | E | E1 | F  | G max. | G min. | H  | J  | K max. | L        | L1 | M  |
|---------------|-----|-----|-----|-----|--------|-------|---|----|----|--------|--------|----|----|--------|----------|----|----|
| <b>CMD-80</b> | 230 | 170 | 150 | 101 | 220    | 171.4 | 6 | 33 | 58 | 12.5   | 8      | 18 | 85 | M95x2  | 3~M16X35 | 24 | 61 |



- 適合鑽床、銑床或切削中心機使用。
- 高精度及高剛性結構。
- 不需要另外搭配立式油壓缸。
- 安裝容易，接上配管即可進行加工。
- 搭配RG系統橡膠筒夾，換模簡便快速。
- 提供側邊配管與底部油路板兩種供油模式。
- Build-in cylinder, ideal for drilling machines, milling machines and machining centers
- Work with AUTOGRIP's rubber collet(RG series), quick change and saving runtime.
- Two modes for the media supply: side-supply mode or baseplate supply mode.



保留規格修改的權利  
Subject to technical changes

### 技術規格 SPECIFICATIONS

| 型號<br>Model | 爪行程(直徑)<br>Jaw stroke (Dia.)<br>mm | 最大夾持能力<br>Max. Chucking Capacity |                      |                    | 最大夾持力<br>Max. clamping force |                             | 最大使用壓力<br>Max. pressure                       |   | 重量<br>Weight<br>kg | 使用筒夾<br>Matching steel collet |
|-------------|------------------------------------|----------------------------------|----------------------|--------------------|------------------------------|-----------------------------|---|---|--------------------|-------------------------------|
|             |                                    | 圓棒<br>Round<br>mm                | 六角材<br>Hexagom<br>mm | 方材<br>Square<br>mm | 氣壓<br>Pneumatic<br>kN (kgf)  | 油壓<br>Hydraulic<br>kN (kgf) | 氣壓<br>Pneumatic<br>MPa (kgf/cm <sup>2</sup> ) | 油壓<br>Hydraulic<br>MPa (kgf/cm <sup>2</sup> ) |                    |                               |
| SCB-52      | ± 0.5                              | 4~52                             | 7~45                 | 7~36               | 8.2(837)                     | 101(10300)                  | 0.6(6)  | 4.0(40)                                       | 8.6                | RG-52                         |
| SCB-65      | ± 0.5                              | 4~65                             | 8~56                 | 8~46               | 10(1020)                     | 105(10700)                  | 0.6(6)  | 4.2(42)                                       | 10.2               | RG-65                         |

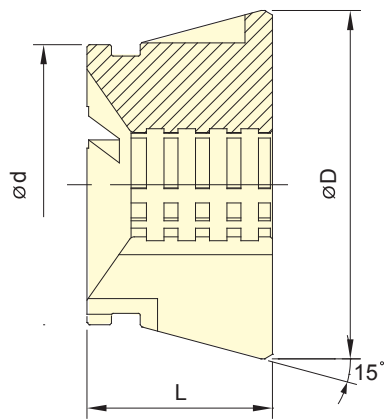
### 外型尺寸 DIMENSIONS

| Model  | A (g6) | A1  | B    | C  | D   | D1  | E | F  | G    | H  |
|--------|--------|-----|------|----|-----|-----|---|----|------|----|
| SCB-52 | 175    | 110 | 84.5 | 25 | 152 | 95  | 7 | 53 | 24.5 | 17 |
| SCB-65 | 192    | 130 | 94   | 30 | 169 | 114 | 9 | 66 | 26.5 | 20 |

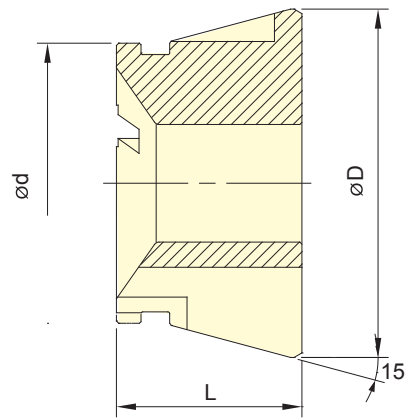
| Model  | J  | K    | L     | L1   | M   | N  | P       | Q   | R  | S    |
|--------|----|------|-------|------|-----|----|---------|-----|----|------|
| SCB-52 | 10 | 51.5 | 4~M10 | 12   | 4.2 | P7 | 3~M6x12 | 160 | 42 | 69.5 |
| SCB-65 | 10 | 61.5 | 4~M10 | 12.5 | 4.2 | P7 | 3~M6x12 | 175 | 50 | 77   |



- 可用於前推式或後拉式設計的筒夾夾頭。
- 平順與接近全包覆夾持的特性，擁有更好的夾持力，且不容易傷害工件。
- 搭配單一對應工件尺寸。
- 單一規格夾持範圍可達 $\pm 0.5\text{mm}$ 。
- 更換快速方便。
- 防塵防屑設計。
- Rubber grip collet for push type or draw type collet chucks.
- Full gripping area: high rigidity, more gripping force. Gripping smoothly: prevent to damage the workpiece.
- More accurate than standard spring collets. Accuracy: With customized rubber grip collet.
- Grip Range:  $\pm 0.5\text{mm}$ .
- Quick change and easy.
- Dust-proof and swarf-proof design.



RG-RT

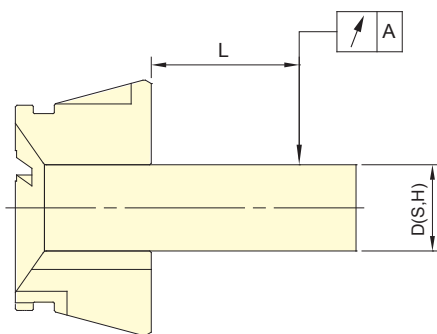


RG-R

保留規格修改的權利  
Subject to technical changes

### 技術規格 SPECIFICATIONS

| 型號<br>Model | 最大夾持能力<br>Max. Chucking Capacity<br>圓棒 Round<br>mm | d  | D    | L  | 適合筒夾夾頭                        |
|-------------|--|----|------|----|-------------------------------|
|             |  |    |      |    | Matching Collect Chuck        |
| RG-42R      | 4~42   | 54 | 79.3 | 42 | CB-42, CBE-42                 |
| RG-42RT     | 11~42  | 54 | 79.3 | 42 | CB-42, CBE-42                 |
| RG-52R      | 4~52   | 66 | 79.3 | 46 | CB-52, CBD-52, CBE-52, SCB-52 |
| RG-52RT     | 11~52  | 66 | 79.3 | 46 | CB-52, CBD-52, CBE-52, SCB-52 |
| RG-65R      | 4~65   | 80 | 99.5 | 53 | CB-65, CBD-65, CBE-65, SCB-65 |
| RG-65RT     | 11~65  | 80 | 99.5 | 53 | CB-65, CBD-65, CBE-65, SCB-65 |



| 測棒 D(S,H)       | L   | A DIN  |        |
|-----------------|-----|--------|--------|
| Test Bar D(S,H) | mm  | Class1 | Class2 |
| 3.0~6.0         | 16  | 0.015  | 0.020  |
| 6.0~10.0        | 25  | 0.015  | 0.020  |
| 10.0~18.0       | 40  | 0.020  | 0.030  |
| 18.0~24.0       | 50  | 0.020  | 0.030  |
| 24.0~30.0       | 60  | 0.020  | 0.030  |
| 30.0~50.0       | 80  | 0.030  | 0.040  |
| 50.0~60.0       | 100 | 0.030  | 0.040  |

註 1：一般內筒夾精度為 DIN 二級

註 2：本公司橡膠筒夾以 DIN 一級為標準

Note1: Collets chuck are conformed to DIN 6343 Class2.

Note2: AUTOGRIP's rubber grip collets are conformed to DIN 6343 Class1.