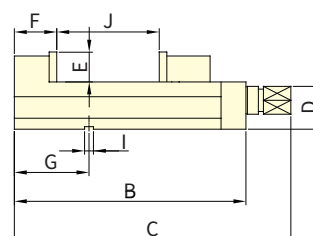
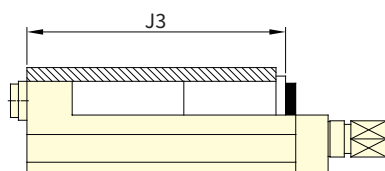
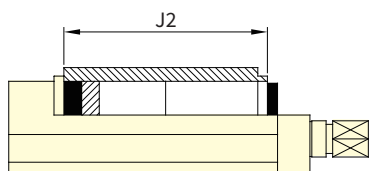
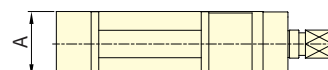
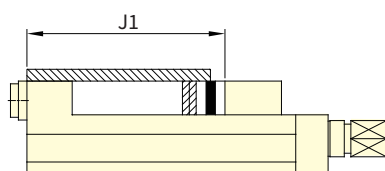
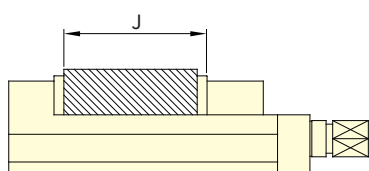




- One-piece casting of the vise bed and movable jaw offers outstanding rigidity and stability, ideal for precision machining.
- The down-thrust spherical segment mechanism applies downward clamping force to eliminate jaw lifting and workpiece tilting, enhancing positioning accuracy and jaw longevity.
- The body is made of high-tensile ductile iron FCD60 (equivalent to GGG60), offering durability and strength for heavy-duty machining.
- Slideways are flame-hardened to HRC 45° for excellent wear resistance, maintaining long-term accuracy during extended use.



Subject to technical changes

DIMENSIONS

MODEL	A	B	C	D	E	F	G	I	Jaw Opening(Max.)				Clamping Force (kgf)	Weight (kgs)
									J	J1	J2	J3		
MVRH-100V	101	380	480	85	48	80	125	16	135	200	240	330	4000	27
MVRH-130V	131	445	545	95	55	85	150	18	190	250	300	390	5000	40
MVRH-160V	161	535	635	105	58	100	165	18	250	330	370	480	5500	58
MVRH-160VL	161	585	685	105	58	100	165	18	300	380	420	530	5500	62
MVRH-200V	201	610	710	110	63	108	190	18	300	370	430	550	6900	81