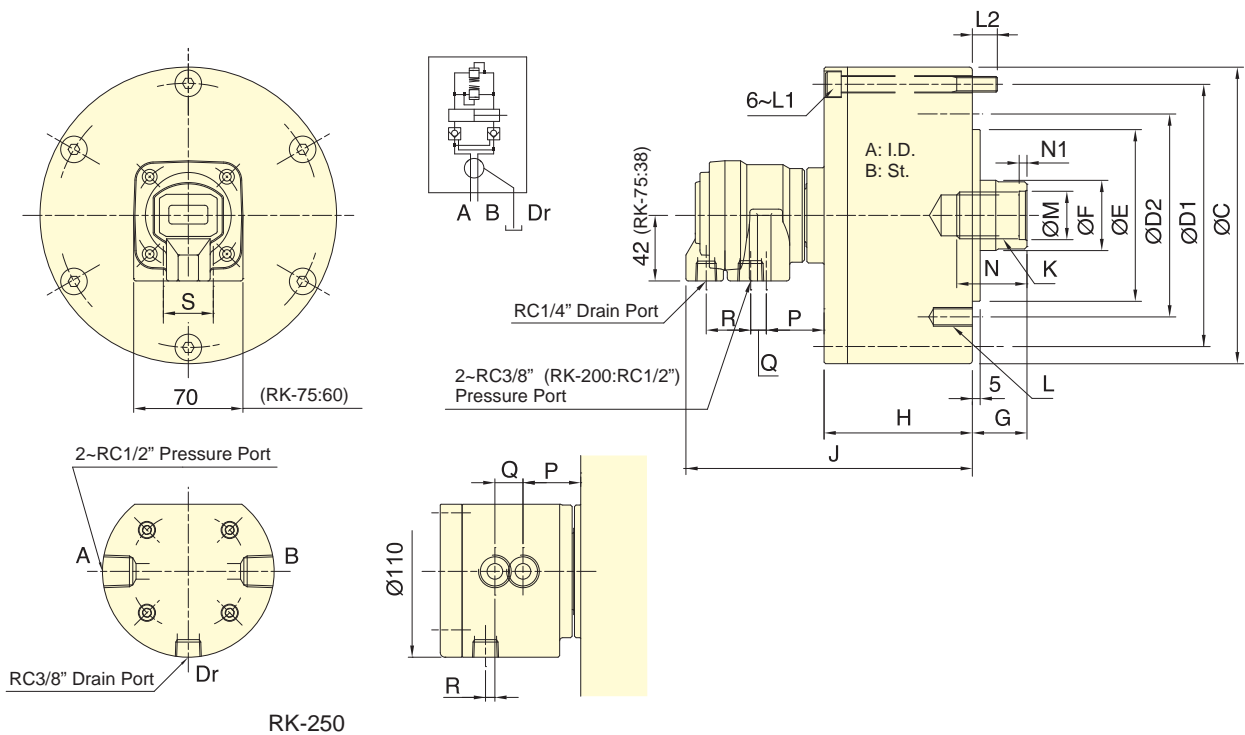


- For short form, light weight and high speed rotary cylinder.
- Built-in safety check valves and pressure relief valves.
- Can screw it from the rear end of the cylinder when mounting.
- The drain port should be independently connected to oil tank to avoid back pressure.


**RK-250**

Subject to technical changes

## SPECIFICATIONS

Model	Eff. piston area		Piston stroke	Max. speed	Max. pressure	Moment of inertia	Weight
	Extend	Retract					
	cm <sup>2</sup>	cm <sup>2</sup>	mm	min <sup>-1</sup> (r.p.m.)	MPa(kgf/cm <sup>2</sup> )	kg · m <sup>2</sup>	kg
<b>RK-75</b>	44.2	37.1	15	6000	4.0 (40)	0.01	2.9
<b>RK-100</b>	78.5	71.5	20	6000	4.0 (40)	0.03	4.4
<b>RK-125</b>	122.7	113.1	25	6000	4.0 (40)	0.05	6.9
<b>RK-150</b>	176.7	160.8	30	5500	4.0 (40)	0.09	9.5
<b>RK-200</b>	314.1	290.4	35	5500	4.0 (40)	0.28	15.4
<b>RK-250</b>	469.1	436.0	60	2000	5.0(50)	0.40	45.2

## DIMENSIONS

Model	A	B	C	D1	D2	E (h7)	F	G max.	G min.	H	J	K	L	L1	L2	M (H8)	N	N1	P	Q	R	S
<b>RK-75</b>	75	15	107	90	90	65	30	45	30	57	148	M20x2.5	6-M8x16	M8x60	12	21	35	5	41.5	10	27.5	26
<b>RK-100</b>	100	20	132	115	100	80	30	45	25	72	163	M20x2.5	6-M10x20	M8x75	12	21	35	5	39.5	10	28.5	32
<b>RK-125</b>	125	25	160	140	130	110	35	50	25	82	172	M24x3.0	6-M12x20	M8x85	12	25	45	5	38.5	10	28.5	32
<b>RK-150</b>	150	30	190	170	130	110	45	55	25	95	184	M30x3.5	12-M12x24	M10x100	16	32	45	5	37	10	28.5	32
<b>RK-200</b>	200	35	245	220	145	120	55	70	35	115	201	M36x4.0	12-M16x30	M10x125	21	38	60	5	38	6	28.5	28
<b>RK-250</b>	245	60	307	275	220	160	65	85	25	165	255	M42x3.0	12-M20x35	M16x175	28	45	65	12	33	18	6	-