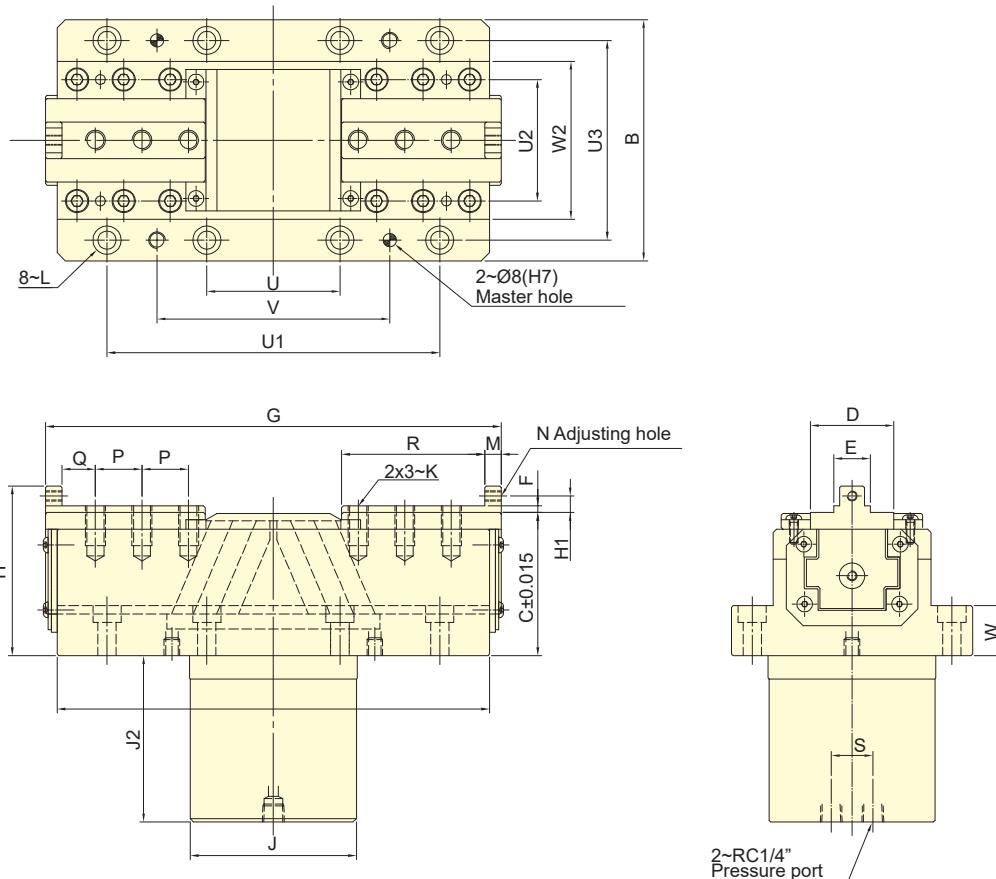


- This wedge-driven synchronous clamp features a long jaw stroke, providing continuous high clamping force during the machining process.
- The sliding surfaces are hardened and precision ground, with direct lubrication to enhance performance.
- High clamping accuracy and excellent dust protection.



Subject to technical changes

## SPECIFICATIONS

| Model        | Eff. Piston area |                 | Jaw stroke(Dia.) | Clamping capacity | Max. clamping force | Max. pressure | Weight |
|--------------|------------------|-----------------|------------------|-------------------|---------------------|---------------|--------|
|              | Extend           | Retract         |                  |                   |                     |               |        |
|              | cm <sup>2</sup>  | cm <sup>2</sup> |                  |                   |                     |               |        |
| <b>CW-30</b> | 31.10            | 24.10           | 30               | 150               | 34.3(3500)          | 7.0(70)       | 32     |

## DIMENSIONS

| Model        | A    | B   | C  | D  | E(h6) | F  | Gmax | Gmin | H   | H1  | J   | J2  | K        | L   | M  |
|--------------|------|-----|----|----|-------|----|------|------|-----|-----|-----|-----|----------|-----|----|
| <b>CW-30</b> | 260  | 145 | 86 | 50 | 22    | 4  | 304  | 274  | 102 | 10  | 100 | 100 | M12x1.75 | M10 | 10 |
| Model        | N    | P   | Q  | R  | S     | U  | U1   | U2   | U3  | V   | W   | W2  |          |     |    |
| <b>CW-30</b> | M6x1 | 28  | 20 | 86 | 25    | 80 | 200  | 120  | 73  | 140 | 30  | 30  |          |     |    |