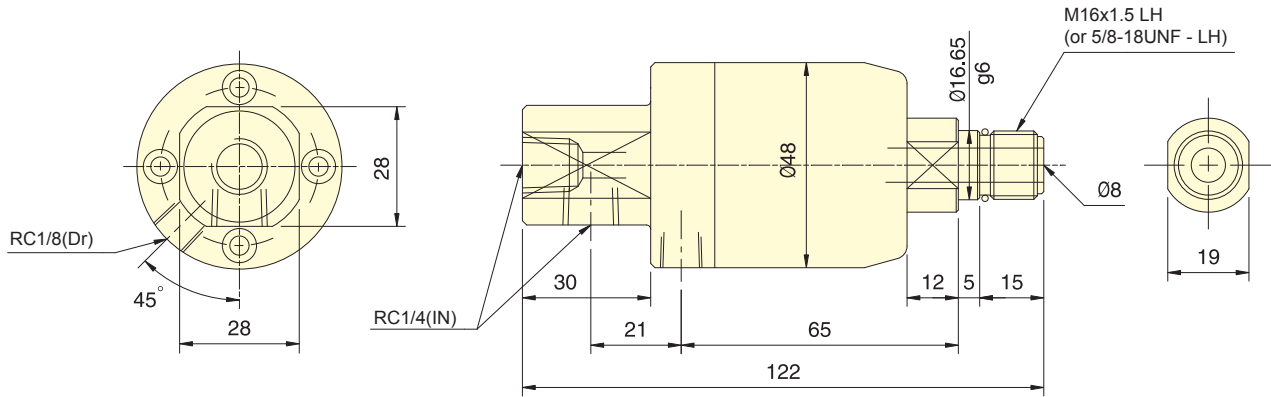




- Coolant joint for high speed, high pressure. Usable for oil and water-soluble coolant.
- Seal bushing inside is made of cemented carbide and ceramics, which provide higher wear-resistance.
- The joint should not run without liquid through coolant port.



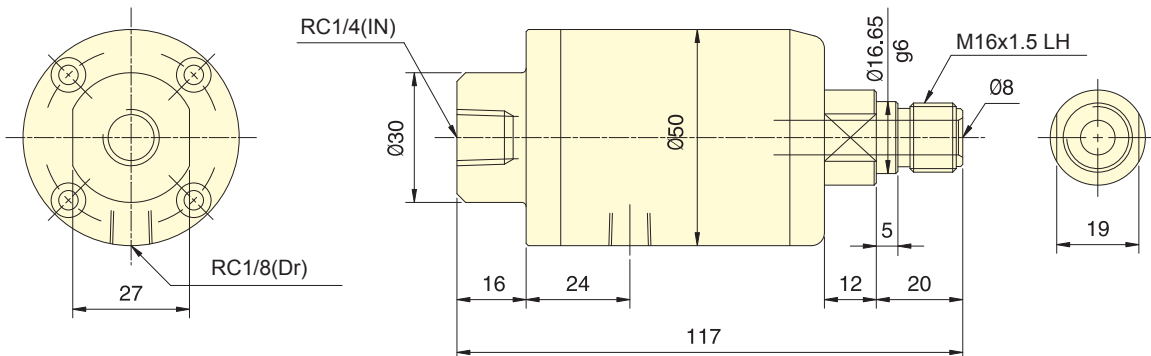
Subject to technical changes

SPECIFICATIONS

Model	PV Limit value (MPa·r/m)	Max. pressure MPa(kgf/cm ²)	Delivery amount (at 50 kgf/cm ²)	Max. speed min ⁻¹ (r.p.m.)	Weight (kg)
RJ-80	14400	6.0(60)	28 l/min	8000	0.5



- Coolant joint for high speed, high pressure and medium delivery.
- Usable for oil and water-soluble coolant.
- Seal bushing inside is made of cemented carbide and ceramics, which provide higher wear-resistance.
- The seal will depart automatically if no liquid passes during operation, and will not be damaged due to dry touching
- Min. pressure is 4kgf/cm².



Subject to technical changes

SPECIFICATIONS

Model	PV Limit value (MPa·r/m)	Max. pressure MPa(kgf/cm ²)	Delivery amount (at 50 kgf/cm ²)	Max. speed min ⁻¹ (r.p.m.)	Min. pressure MPa(kgf/cm ²)	Weight (kg)
RJ-90	17500	7.0(70)	28 l/min	10000	0.4(4)	0.5