

Subject to technical changes

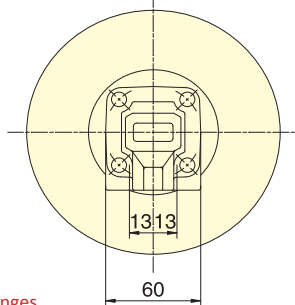
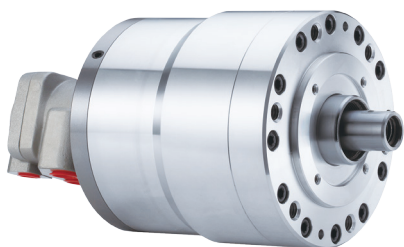
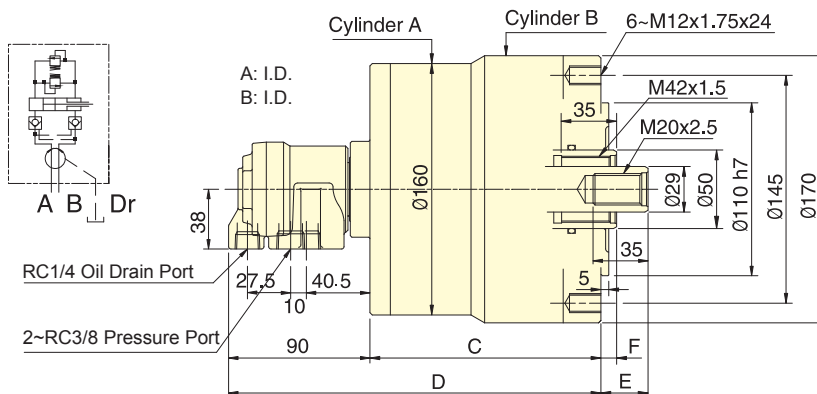
SPECIFICATIONS

Model	Eff. piston area				Piston stroke mm	Max. speed min ⁻¹ (r.p.m.)	Max. pressure MPa(kgf/cm ²)	I Moment of inertia kg·m ²	Weight kg
	Extend		Retract						
	A cm ²	B cm ²	A cm ²	B cm ²					
RD-120	122.7	126.1	116.1	113.1	20	5000	3.0(30)	0.14	11.3
RD-125	122.7	126.1	116.1	113.1	25	5000	3.0(30)	0.15	11.5

DIMENSIONS

Model	A	B	C	D	E max.	E min.	F max.	F min.
RD-120	125	130	137	227	60	40	35	15
RD-125	125	130	147	237	55	30	35	10

- For short form, light weight, double rod rotary cylinder.
- Built-in safety check valves and pressure relief valves.
- The drain port should be independently connected to oil tank to avoid back pressure.



Subject to technical changes

SPECIFICATIONS

Model	Eff. piston area				Piston stroke mm	Max. speed min ⁻¹ (r.p.m.)	Max. pressure MPa(kgf/cm ²)	I Moment of inertia kg·m ²	Weight kg
	Extend		Retract						
	A cm ²	B cm ²	A cm ²	B cm ²					
RD-120N	122.7	126.1	116.1	113.1	20	5000	3.0(30)	0.14	11.2
RD-125N	122.7	126.1	116.1	113.1	25	5000	3.0(30)	0.15	11.4

DIMENSIONS

Model	A	B	C	D	E max.	E min.	F max.	F min.
RD-120N	125	130	137	214	60	40	35	15
RD-125N	125	130	147	224	55	30	35	10

- For short form, light weight, double rod rotary cylinder.
- The drain port should be independently connected to oil tank to avoid back pressure.

