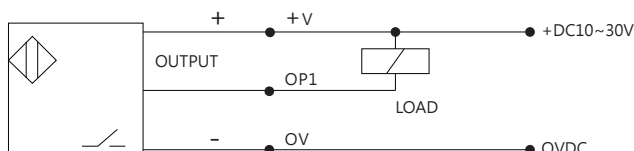


- The proximity switch is optional.
- Drain port $\varnothing 40$ and $\varnothing 60$ are optional product.

Model	Power supply	Switching cap.	Output type
IFS287 (IFM)	DC 10/30V	100mA	NPN

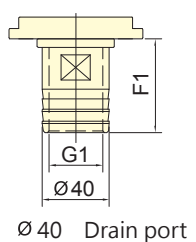
Terminal Connections

Model	+V	OP1	OV
IFS287 (IFM)	BROWN	BLACK	BLUE

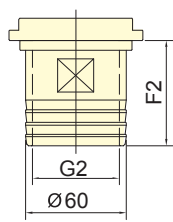


CT-SB

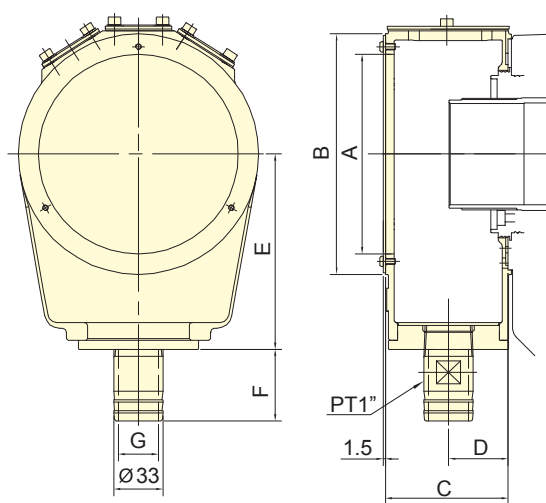
CT-SBS



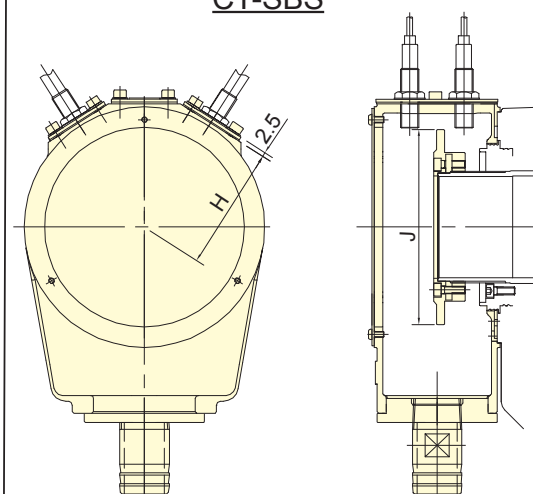
$\varnothing 40$ Drain port



$\varnothing 60$ Drain port



Coolant Collector



Coolant Collector with Detecting Ring

Subject to technical changes

DIMENSIONS

Model	A	B	C	D	E	F	F1	F2	G	G1	G2	H	J	Weight (kg)		Matching cyl.
														CT-SB	CT-SBS	
CT-S05B/CT-S05BS	97	120	68.3	33.3	96	49.6	56	-	25	32	-	62	86	1.1	1.6	TS-539,TR-539
CT-S08B/CT-S08BS	133	160	82	40	130	49.6	56	63	25	32	52	82	130	0.9	1.4	TS-867