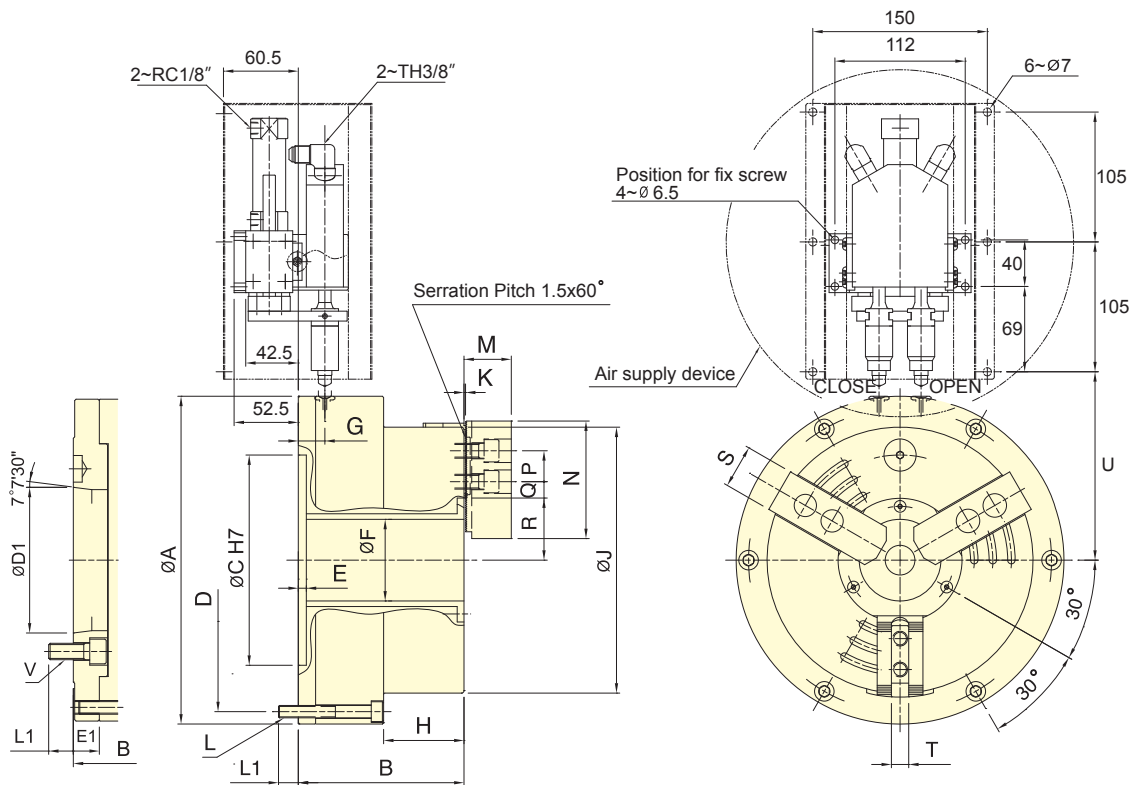




- Large through-hole 3-jaw power chuck with built in air cylinder.
- Patented air supply system, it is easy to install and maintain. No abrasion issue of traditional sealed ring. Maintenance cost and time can be saved.
- Patent numbers :
 - Germany : 20.2011.101.818.4 /20.2012.102.498.5
 - Japan : 3169457 / 3178706 / EU : EP 2517822 B1
 - China : ZL 2011 2 0141324.9 /ZL 2012 2 0274549.6
 - Taiwan : M440159 / M415011 / U.S.A. : US8770222 B2
 - Italy : 0000278076


AP-A

Subject to technical changes

SPECIFICATIONS

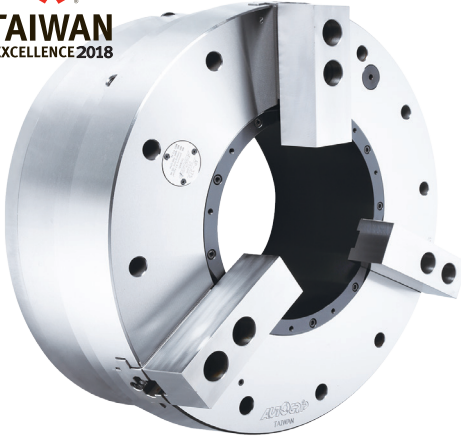
| Model | Thru-hole Dia. | Jaw stroke (Dia.) | Chucking Dia. | | Max. pressure | Max. Clamping force | Max. speed | I Moment of inertia | Weight | Air Consumption | | |
|--------|----------------|-------------------|---------------|------|----------------------------|---------------------|----------------------------|------------------------|--------|--------------------------------|----|-----|
| | | | Max. | Min. | | | | | | | | |
| | mm | mm | mm | mm | MPa (kgf/cm ²) | kN (kgf) | min ⁻¹ (r.p.m.) | kg-m ² | kg | lit (at 6kgf/cm ²) | | |
| AP-52 | A6 | 52 | 5.9 | 170 | 15 | 0.6(6.1) | 40.4(4118) | 4200 | 0.2 | 26 | 27 | 3.1 |
| AP-66 | A6 | 66 | 7.6 | 215 | 24 | 0.6(6.1) | 51.0(5185) | 3500 | 0.4 | 38 | 39 | 5.1 |
| AP-86 | A8 | 86 | 8.9 | 268 | 43 | 0.6(6.1) | 76.0(7723) | 3200 | 0.7 | 58 | 60 | 8.7 |
| AP-115 | A8 | 115 | 10.6 | 330 | 55 | 0.6(6.1) | 80.0(8155) | 3000 | 1.7 | 92 | 95 | 12 |

DIMENSIONS

| Model | A | B | C | D | D1 | E | E1 | F | G | H | J | K | L | | |
|--------|----|-----|-----|-----|-----|-----|--------|-----|----|-----|------|------|-----|---|-------|
| AP-52 | A6 | 235 | 121 | 140 | 170 | 215 | 106.38 | 6.5 | 19 | 52 | 21.5 | 58.5 | 170 | 2 | 6~M10 |
| AP-66 | A6 | 265 | 134 | 153 | 170 | 245 | 106.38 | 6.5 | 19 | 66 | 21.5 | 65 | 215 | 2 | 6~M10 |
| AP-86 | A8 | 315 | 142 | 169 | 220 | 295 | 139.72 | 6.5 | 27 | 86 | 21.5 | 67 | 268 | 2 | 6~M10 |
| AP-115 | A8 | 370 | 154 | 181 | 220 | 350 | 139.72 | 6.5 | 27 | 115 | 21.5 | 69 | 330 | 2 | 6~M10 |

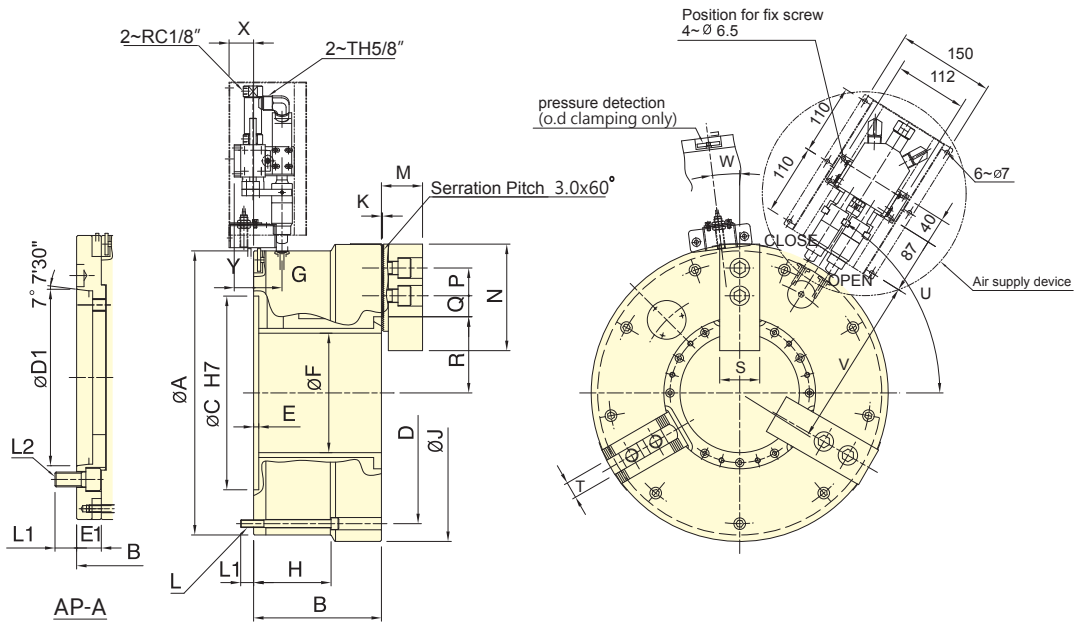
| Model | L1 | M | N | P | Q max. | Q min. | R max. | R min. | S | T | U | V | | |
|--------|----|----|----|----|--------|--------|--------|--------|------|------|----|----|-------|-------|
| AP-52 | A6 | 15 | 18 | 37 | 73 | 20 | 21.2 | 9.2 | 38 | 35.1 | 31 | 12 | 145.5 | 6~M12 |
| AP-66 | A6 | 16 | 18 | 38 | 95 | 25 | 23.7 | 8.7 | 50.2 | 46.4 | 35 | 14 | 159.5 | 6~M12 |
| AP-86 | A8 | 16 | 24 | 43 | 110 | 30 | 32.2 | 12.7 | 62.2 | 57.8 | 40 | 16 | 184.5 | 6~M16 |
| AP-115 | A8 | 16 | 24 | 51 | 130 | 30 | 44.7 | 14.7 | 77 | 71.7 | 50 | 21 | 212 | 6~M16 |

1. The dimensions and the specifications of AP-A type are in red data.



- Large through-hole 3-jaw power chuck with build in air cylinder.
- With build-in "pressure detection" device in chuck which can check the pressure is lowered rapidly within the chuck, guarantee to the security of operating.
- Patented air supply system, it is easy to install and maintain. No abrasion issue of traditional sealed ring. Maintenance cost and time can be saved.
- Patent numbers :
 Germany : 20.2011.101.818.4 / 20.2012.102.498.5
 Japan : 3169457 / 3178706 / EU : EP 2517822 B1
 China : ZL 2011 2 0141324.9 / ZL 2012 2 0274549.6
 Taiwan : M440159 / M415011 / U.S.A. : US8770222 B2
 Italy : 0000278076

SPECIAL PURPOSE POWER CHUCKS



Subject to technical changes

SPECIFICATIONS

| Model | Thru-hole Dia. | Jaw stroke (Dia.) | Chucking Dia. | | Max. pressure | Max. Clamping force | Max. speed | I Moment of inertia | Weight | | Air Consumption | |
|--------|----------------|-------------------|---------------|------|----------------------------|---------------------|----------------------------|------------------------|--------|-------------------------------|-----------------|------|
| | | | Max. | Min. | | | | | kg | lit(at 6kgf/cm ²) | | |
| | mm | mm | mm | mm | MPa (kgf/cm ²) | kN (kgf) | min ⁻¹ (r.p.m.) | kg-m ² | kg | | | |
| AP-145 | A11 | 145 | 14 | 420 | 62 | 0.6(6.1) | 85.0(8667) | 1700 | 3.8 | 156 | 182 | 17.8 |
| AP-185 | A15 | 185 | 14 | 460 | 100 | 0.6(6.1) | 110.0(11216) | 1300 | 6.0 | 188 | 223 | 22 |
| AP-230 | A15 | 230 | 17 | 535 | 170 | 0.6(6.1) | 125.0(12742) | 1300 | 11.1 | 265 | 310 | 34 |
| AP-275 | A20 | 275 | 17 | 580 | 200 | 0.6(6.1) | 140.0(14271) | 1100 | 15.5 | 301 | 346 | 39 |
| AP-320 | A20 | 320 | 17 | 658 | 200 | 0.6(6.1) | 184.0(18762) | 1000 | 27.2 | 415 | 505 | 45 |
| AP-375 | A20 | 375 | 24 | 738 | 260 | 0.6(6.1) | 188.0(19115) | 850 | 44.2 | 530 | 545 | 55 |

DIMENSIONS

| Model | A | B | C | D | D1 | E | E1 | F | G | H | J | K | L | L1 | | | |
|--------|------------|-----|-----|------------|-----|-----|---------------|---|-----------|-----|----|-------|-----|-----|-------|----|-----------|
| AP-145 | A11 | 400 | 198 | 231 | 300 | 365 | 196.87 | 8 | 33 | 145 | 34 | 120 | 420 | 3.5 | 9~M12 | 20 | 31 |
| AP-185 | A15 | 460 | 198 | 238 | 300 | 405 | 285.78 | 8 | 40 | 185 | 44 | 120 | 460 | 3.5 | 9~M12 | 20 | 35 |
| AP-230 | A15 | 515 | 226 | 266 | 380 | 483 | 285.78 | 8 | 40 | 230 | 49 | 145 | 535 | 3.5 | 6~M16 | 24 | 35 |
| AP-275 | A20 | 560 | 232 | 272 | 380 | 528 | 412.78 | 8 | 40 | 275 | 52 | 152 | 580 | 3.5 | 6~M16 | 24 | 35 |
| AP-320 | A20 | 615 | 256 | 306 | 520 | 580 | 412.78 | 8 | 50 | 320 | 55 | 116.5 | 658 | 3.5 | 9~M16 | 25 | 33 |
| AP-375 | A20 | 690 | 272 | 322 | 520 | 650 | 412.78 | 8 | 50 | 375 | 55 | 127 | 738 | 3.5 | 9~M16 | 28 | 33 |

| Model | L2 | M | N | P | Q max. | Q min. | R max. | R min. | S | T | U | V | W | X | Y | |
|--------|------------|--------------|------|-----|--------|--------|--------|--------|-------|----|------|-----|-----|----|----|----|
| AP-145 | A11 | 6~M20 | 63.7 | 165 | 43 | 53.5 | 23.5 | 98 | 91 | 62 | 25.5 | 57° | 242 | 0° | 38 | 20 |
| AP-185 | A15 | 6~M24 | 63.7 | 165 | 43 | 53.5 | 23.5 | 118 | 111 | 62 | 25.5 | 58° | 272 | 7° | 38 | 20 |
| AP-230 | A15 | 6~M24 | 71.7 | 180 | 60 | 48.5 | 18.5 | 145 | 136.5 | 64 | 25.5 | 30° | 300 | 7° | 33 | 15 |
| AP-275 | A20 | 6~M24 | 71.7 | 180 | 60 | 48.5 | 18.5 | 167.5 | 159 | 64 | 25.5 | 30° | 322 | 7° | 30 | 12 |
| AP-320 | A20 | 6~M24 | 81.5 | 210 | 60 | 60.5 | 24.5 | 190 | 181.5 | 74 | 30 | 52° | 350 | 7° | 27 | 9 |
| AP-375 | A20 | 6~M24 | 81.5 | 210 | 60 | 66.5 | 24.5 | 223.5 | 211.5 | 74 | 30 | 52° | 387 | 7° | 27 | 9 |

1. The dimensions and the specifications of AP-A type are in red data.