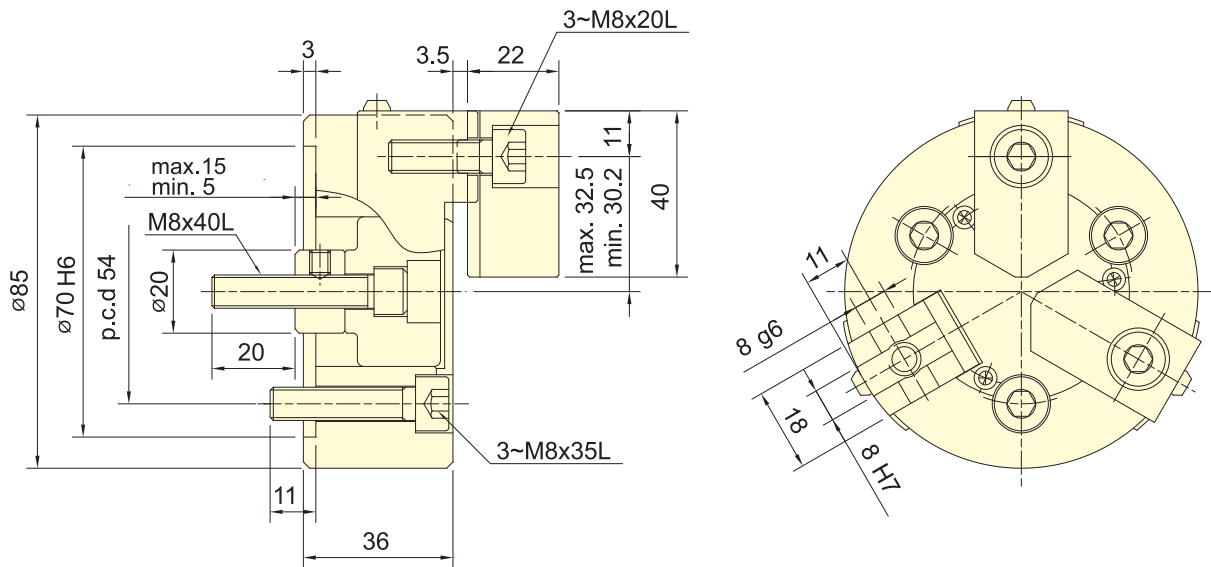


- WEDGE-HOOK type 3-jaw mini power chuck.
- Matching surfaces of all parts hardened, ground and lubricated directly.
- Suitable for bench lathe.

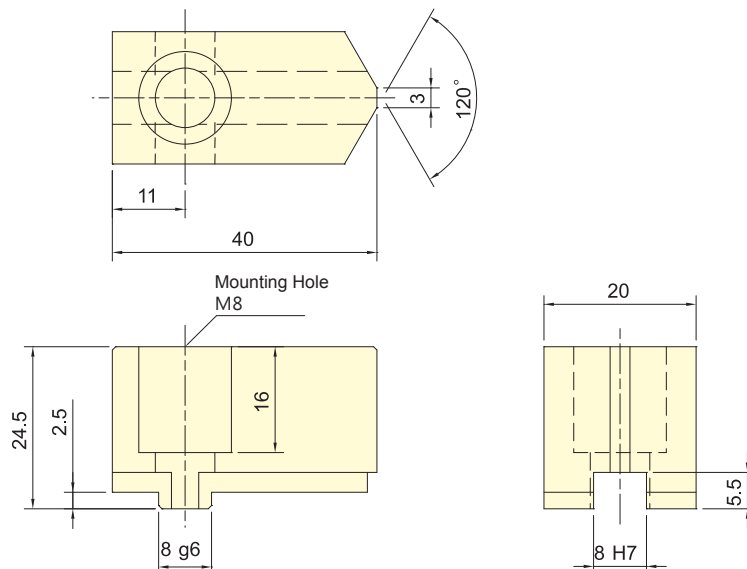


Subject to technical changes

### SPECIFICATIONS

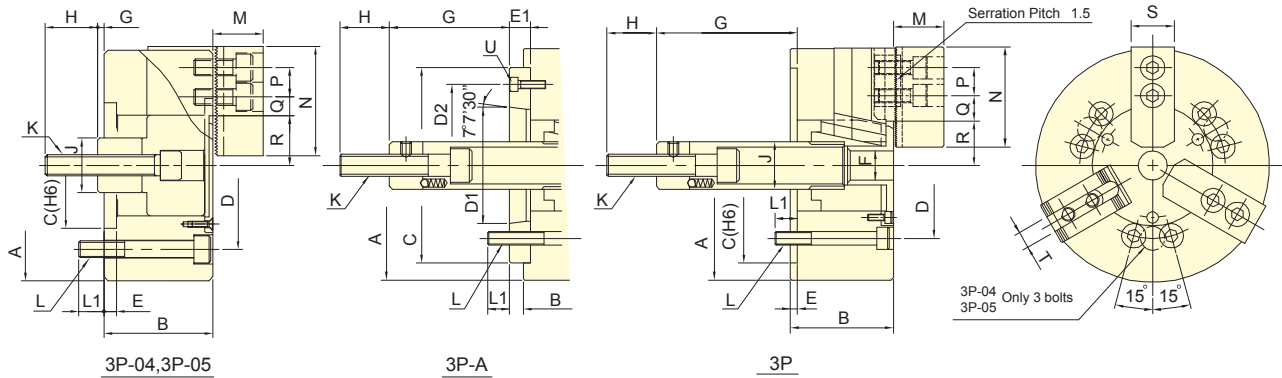
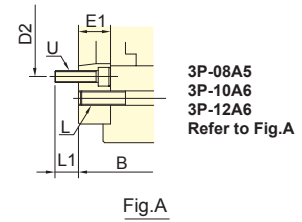
Model	Plunger stroke mm	Jaw stroke (Dia.) mm	Chucking Dia.		Max. D.B. pull kN (kgf)	Max. Clamping force kN (kgf)	Max. speed min <sup>-1</sup> (r.p.m.)	I Moment of inertia kg·m <sup>2</sup>	Weight kg	Matching cyl. RK-75	Max. pressure MPa (kgf/cm <sup>2</sup> )
			Max. mm	Min. mm							
3P-03	10	4.6	85	3	4.5(460)	11.3(1150)	7000	0.004	1.8		1.2(12.4)

Standard Soft Jaw For 3P-03 Power Chuck  
SJ-K03





- WEDGE-HOOK type 3-jaw power chuck.
- Matching surfaces of all parts hardened, ground and lubricated directly.
- High rigidity and high clamping accuracy.



Subject to technical changes

SPECIFICATIONS

Model	Plunger stroke mm	Jaw stroke (Dia.) mm	Chucking Dia.		Max. D.B. pull kN (kgf)	Max. Clamping force kN (kgf)	Max. speed min <sup>-1</sup> (r.p.m.)	I Moment of inertia kg·m <sup>2</sup>	Weight kg	Matching cyl.	Max. pressure MPa (kgf/cm <sup>2</sup> )	
			Max. mm	Min. mm								
3P-04	15	6.4	110	5	8.1(830)	22.5(2300)	6000	0.01	4.1	-	RK-75(N) RA-130 2.2(22) 0.6(6)	
3P-05	15	6.4	135	14	8.1(830)	25(2550)	5500	0.02	6.2	-	RK-75(N) RA-130 2.2(22) 0.6(6)	
3P-06	A5	20	8.5	165	16	17.9(1830)	52.4(5350)	5250	0.05	13	14	RK-100(N) RA-170 2.6(26) 0.6(6)
3P-08	A5	21	8.8	210	21	25(2550)	74.5(7600)	4750	0.14	24	28	RK-125(N) RA-220 2.3(23) 0.5(5)
3P-08	A6	21	8.8	210	21	25(2550)	74.5(7600)	4750	0.14	24	27	RK-125(N) RA-220 2.3(23) 0.5(5)
3P-10	A6	25	8.8	254	24	28.9(2950)	107.8(11000)	4000	0.3	35	42	RK-125(N) RA-220 2.6(26) 0.6(6)
3P-10	A8	25	8.8	254	24	28.9(2950)	107.8(11000)	4000	0.3	35	40	RK-125(N) RA-220 2.6(26) 0.6(6)
3P-12	A6	30	10.5	304	24	41(4180)	155.8(15900)	3360	0.73	59	65	RK-150(N) RA-270 2.6(26) 0.8(8)
3P-12	A8	30	10.5	304	24	41(4180)	155.8(15900)	3360	0.73	59	63	RK-150(N) RA-270 2.6(26) 0.8(8)

DIMENSIONS

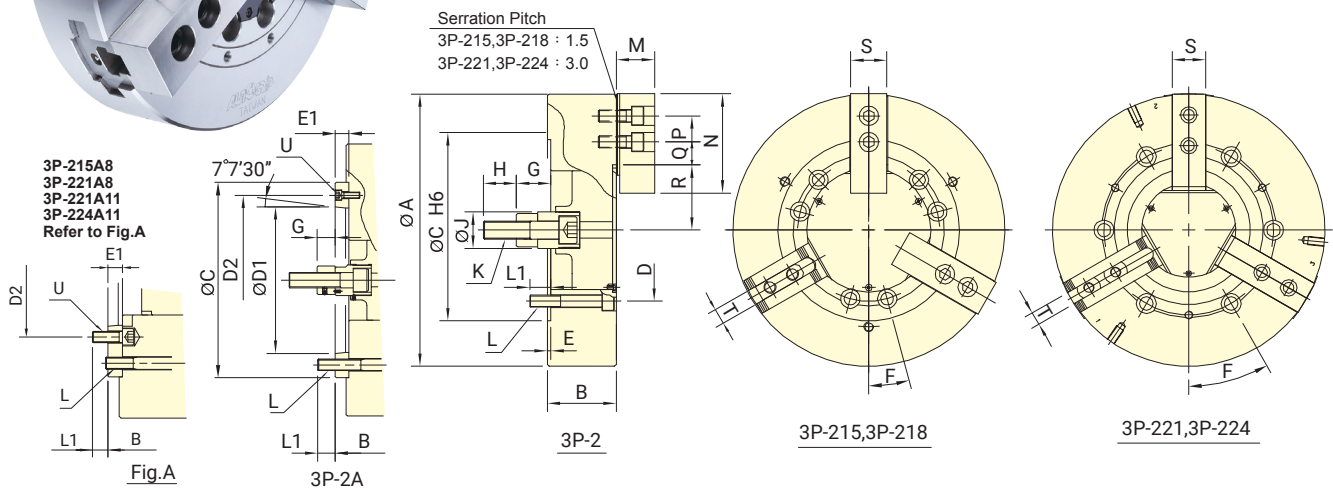
Model	A	B	C	D	D1	D2	E	E1	F	G max.	G min.	H	J			
3P-04	110	52	-	60	80	-	-	6	-	18	-	25	26			
3P-05	135	55	-	80	100	-	-	7	-	9	-	35	28			
3P-06	A5	165	84	140	104.8	82.56	116	5	15	21	102.6	87.6	82.6	67.6	35	34
3P-08	A5	210	103	170	133.4	82.56	104.8	5	23	25	127	104	106	83	36	38
3P-08	A6	210	97	170	133.4	106.38	150	5	17	25	127	110	106	89	36	38
3P-10	A6	254	109	220	171.4	106.38	133.4	5	25	34	158	133	133	108	36	45
3P-10	A8	254	102	220	171.4	139.72	190	5	18	34	158	140	133	115	36	45
3P-12	A6	304	125	220	171.4	106.38	133.4	6	25	34	163	138	133	108	36	50
3P-12	A8	304	118	220	171.4	139.72	190	6	18	34	163	145	133	115	36	50

Model	K	L	L1	M	N	P	Q max.	Q min.	R max.	R min.	S	T	U
3P-04	M10x1.5	3~M8	12	-	24	52	11.2	6.7	23.6	20.4	23	10	-
3P-05	M12x1.75	3~M8	14	-	31	62	15.7	5.2	30.4	27.2	25	10	-
3P-06	A5	M16x2	6~M10	14	14	37	18.25	9.25	38.25	33.75	31	12	3~M6
3P-08	A5	M20x2.5	6~M12	20	17	38	25.25	11.75	46.3	41.9	35	14	6~M10
3P-08	A6	M20x2.5	6~M12	20	18	38	25.25	11.75	46.3	41.9	35	14	3~M6
3P-10	A6	M20x2.5	6~M16	18	18	43	35.25	12.75	51.1	46.7	40	16	6~M12
3P-10	A8	M20x2.5	6~M16	18	25	43	35.25	12.75	51.1	46.7	40	16	3~M8
3P-12	A6	M20x2.5	6~M16	18	18	51	48.75	12.75	61	55.75	50	18 or 21	6~M12
3P-12	A8	M20x2.5	6~M16	18	25	51	48.75	12.75	61	55.75	50	18 or 21	3~M8

1. The dimensions and the specifications of 3P-A type are in red data.



- WEDGE-HOOK type 3-jaw power chuck.
- Matching surfaces of all parts hardened, ground and lubricated directly.
- High rigidity and high clamping accuracy.



Subject to technical changes

SPECIFICATIONS

Model	Plunger stroke mm	Jaw stroke (Dia.) mm	Chucking Dia.		Max. D.B. pull kN (kgf)	Max. Clamping force kN (kgf)	Max. speed min <sup>-1</sup> (r.p.m.)	I Moment of inertia kg·m <sup>2</sup>	Weight		Matching cyl.	Max. pressure MPa (kgf/cm <sup>2</sup> )
			Max. mm	Min. mm					kg	kg		
3P-215 A8	35	16	381	50	82(8360)	249(25390)	3000	1.8	109.9	122.4	RH-200or RK-200(N)	2.8(28)
3P-215 A11	35	16	381	50	82(8360)	249(25390)	3000	1.8	109.9	116	RH-200or RK-200(N)	2.8(28)
3P-218 A11	35	16	450	60	82(8360)	249(25400)	2800	2.32	124	130	RH-200or RK-200(N)	2.8(28)
3P-221 A8	35	16	530	59	82(8360)	272.6(27800)	1900	4.9	177	200	RH-200or RK-200(N)	2.8(28)
3P-221 A11	35	16	530	59	82(8360)	272.6(27800)	1900	4.9	177	194	RH-200or RK-200(N)	2.8(28)
3P-224 A11	35	16	610	152	82(8360)	272.6(27800)	1750	7	230	246.28	RH-200or RK-200(N)	2.8(28)
3P-224 A15	35	16	610	152	82(8360)	272.6(27800)	1750	7	230	238.6	RH-200or RK-200(N)	2.8(28)

DIMENSIONS

Model	A	B	C	D	D1	D2	E	E1	F	G max.	G min.	H	J			
3P-215 A8	381	114	141	300	235	139.72	171.4	6	33	15°	104	71	69	36	55	60
3P-215 A11	381	114	130	300	235	196.87	260	6	22	15°	104	82	69	47	55	60
3P-218 A11	450	114	130	300	235	196.87	260	6	22	15°	92	70	57	35	55	60
3P-221 A8	530	125	152	380	330.2	139.72	171.4	6	33	30°	97	64	62	29	55	60
3P-221 A11	530	125	146	380	330.2	196.87	235	6	27	30°	97	70	62	35	55	60
3P-224 A11	610	125	146	380	330.2	196.87	235	6	27	30°	97	70	62	35	55	60
3P-224 A15	610	125	146	380	330.2	285.78	330.2	6	27	30°	97	70	62	35	55	60

Model	K	L	L1	M	N	P	Q max.	Q min.	R max.	R min.	S	T	U	
3P-215 A8	M30x3.5	6~M20	30	29	63.3	165	43	51.25	18.25	77.5	69.5	62	25.5	6~M16
3P-215 A11	M30x3.5	6~M20	30	33	63.3	165	43	51.25	18.25	77.5	69.5	62	25.5	3~M10
3P-218 A11	M30x3.5	6~M20	35	33	63.3	165	43	52.75	18.25	108	100	62	25.5	3~M10
3P-221 A8	M30x3.5	6~M24	31	24	71	180	60	96.5	24.5	86	78	65	25	6~M16
3P-221 A11	M30x3.5	6~M24	31	28	71	180	60	96.5	24.5	86	78	65	25	6~M20
3P-224 A11	M30x3.5	6~M24	31	28	71	180	60	96.5	24.5	125	117	65	25	6~M20
3P-224 A15	M30x3.5	6~M24	31	34	71	180	60	96.5	24.5	125	117	65	25	3~M12

1. The dimensions and the specifications of 3P-A type are in red data.