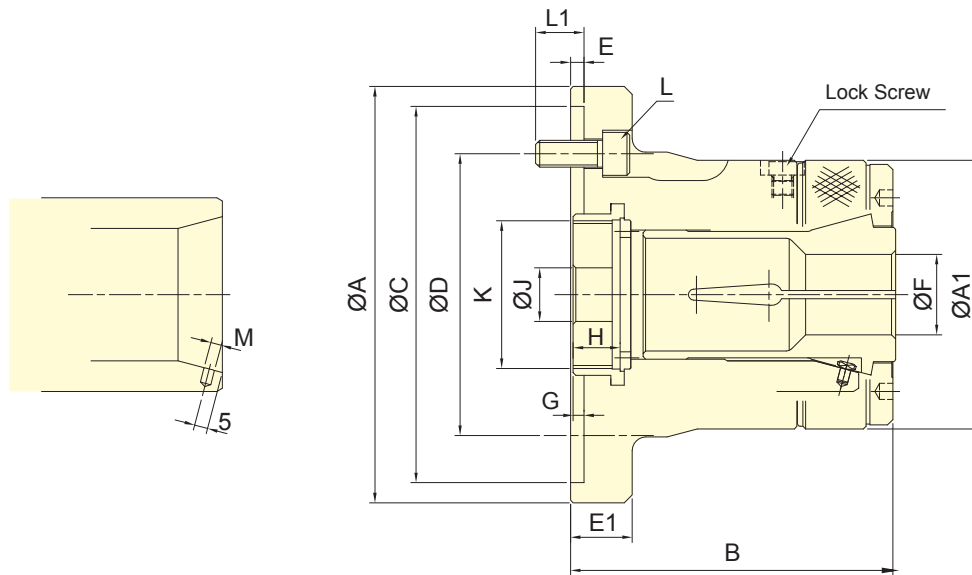


- PUSH type collet used mainly on turning, CNC, special purpose machines , ect.
- High clamping accuracy, high speed and high rigidity.
- Sealed against swarf, chips and coolant.
- The collet used must accord with DIN 6343.
- Patent numbers :
 PAT.NO.M380842(Taiwan)
 PAT.NO.ZL201020113762.X(China)



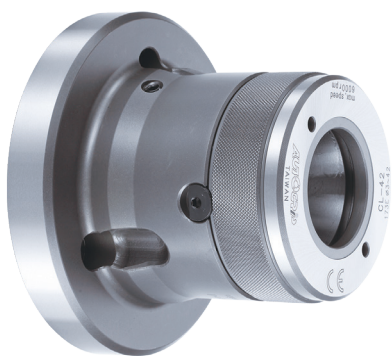
Subject to technical changes

SPECIFICATIONS

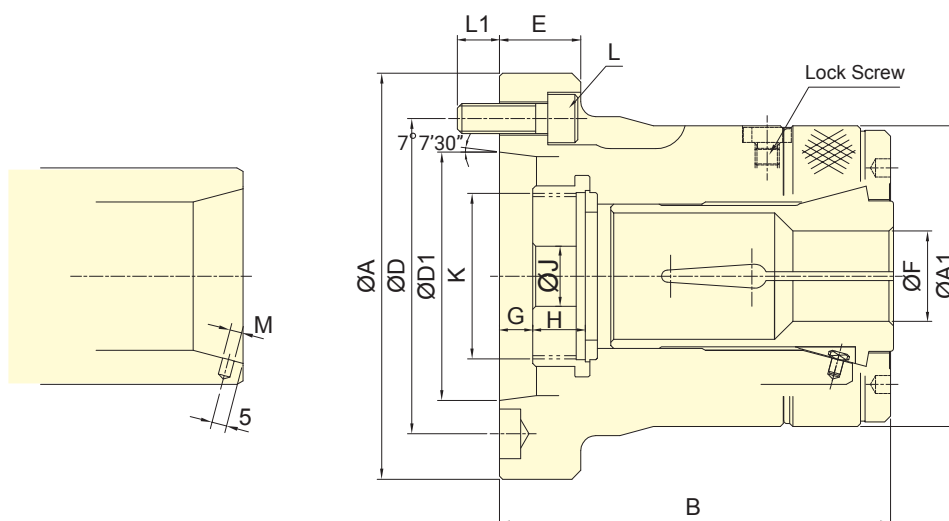
| Model | Plunger stroke mm | Max. Chucking Capacity | | | Max. D.B. pull kN (kgf) | Max. clamping force kN (kgf) | Max. speed min ⁻¹ (r.p.m.) | Moment of inertia kg · m ² | Weight kg | Matching steel collet | Matching Cyl. | Max. pressure MPa (kgf/cm ²) |
|---------|----------------------|------------------------|---------------|--------------|----------------------------|---------------------------------|--|--|--------------|-----------------------|---------------|---|
| | | Round mm | Hexagom mm | Square mm | | | | | | | | |
| CL-26 | 4.5 | 3~26 | 4~22 | 4~18 | 17.6(1800) | 37.9(3870) | 8000 | 0.040 | 4.3 | 161E | TK-A533 | 2.4(24) |
| CL-30 | 4.5 | 3~30 | 4~26 | 4~20 | 19.6(2000) | 42.1(4300) | 8000 | 0.038 | 4.2 | 163E | TK-A533 | 2.7(27) |
| CL-36 | 6 | 3~36 | 6~32 | 6~26 | 22.5(2300) | 48.5(4950) | 6000 | 0.062 | 7.0 | 171E | TK-C643 | 2.3(23) |
| CL-42 | 6 | 3~42 | 6~36 | 6~29 | 24.5(2500) | 52.9(5400) | 6000 | 0.060 | 6.9 | 173E | TK-C643 | 2.5(25) |
| CL-52 | 6 | 5~52 | 8~45 | 7~36 | 27.4(2800) | 59.0(6020) | 6000 | 0.101 | 14.3 | 177E | TK-A853 | 2.0(20) |
| CL-6017 | 6 | 5~60 | 8~52 | 7~42 | 29.4(3000) | 63.7(6500) | 5000 | 0.098 | 14.1 | 185E | TS-866 | 1.8(18) |
| CL-6022 | 6 | 5~60 | 8~52 | 7~42 | 29.4(3000) | 63.7(6500) | 5000 | 0.126 | 16.3 | 185E | TS-866 | 1.8(18) |
| CL-80 | 6 | 20~80 | 18~69 | 15~56 | 34.3(3500) | 71.5(7300) | 4000 | 0.108 | 17.8 | 193E | TK-A1287 | 1.6(16) |

DIMENSIONS

| Model | A | A1 | B | C(H6) | D | E | E1 | F max. | F min. | G max. | G min. | H | J | K max. | L | L1 | M |
|---------|-----|-----|-------|-------|-------|---|----|--------|--------|--------|--------|------|----|---------|----------|----|---|
| CL-26 | 120 | 85 | 100 | 110 | 82.6 | 4 | 23 | 26 | 3 | 7 | 2.5 | 15 | 12 | M40x1.5 | 3~M10x25 | 16 | 4 |
| CL-30 | 120 | 85 | 100 | 110 | 82.6 | 4 | 23 | 30 | 3 | 7 | 2.5 | 15 | 12 | M40x1.5 | 3~M10x25 | 16 | 4 |
| CL-36 | 155 | 100 | 120 | 140 | 104.8 | 5 | 23 | 36 | 3 | 7 | 1 | 17.5 | 20 | M55x2 | 3~M10x25 | 18 | 4 |
| CL-42 | 155 | 100 | 120 | 140 | 104.8 | 5 | 23 | 42 | 3 | 7 | 1 | 17.5 | 20 | M55x2 | 3~M10x25 | 18 | 4 |
| CL-52 | 185 | 130 | 145.5 | 170 | 133.4 | 5 | 27 | 52 | 5 | 9 | 3 | 24 | 30 | M60x2 | 6~M12x30 | 20 | 5 |
| CL-6017 | 185 | 130 | 145.5 | 170 | 133.4 | 5 | 27 | 60 | 5 | 9 | 3 | 24 | 45 | M75x2 | 6~M12x30 | 20 | 5 |
| CL-6022 | 234 | 130 | 142 | 220 | 171.4 | 5 | 32 | 60 | 5 | 13 | 7 | 24 | 45 | M85x2 | 6~M16x30 | 20 | 5 |
| CL-80 | 234 | 156 | 163 | 220 | 171.4 | 5 | 32 | 80 | 20 | 15.5 | 9.5 | 22 | 45 | M100x2 | 6~M16x30 | 20 | 5 |



- PUSH type collet used mainly on turning, CNC, special purpose machines , ect.
- High clamping accuracy, high speed and high rigidity.
- Sealed against swarf, chips and coolant.
- The collet used must accord with DIN 6343.
- Patent numbers :
 PAT.NO.M380842(Taiwan)
 PAT.NO.ZL201020113762.X(China)



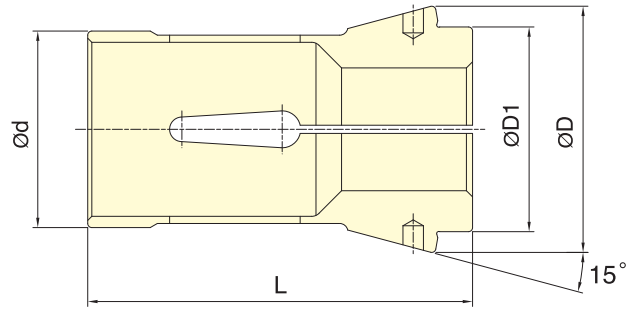
Subject to technical changes

SPECIFICATIONS

| Model | Plunger stroke mm | Max. Chucking Capacity | | | Max. D.B. pull kN (kgf) | Max. clamping force kN (kgf) | Max. speed min ⁻¹ (r.p.m.) | Moment of inertia kg · m ² | Weight kg | Matching steel collet | Matching Cyl. | Max. pressure MPa (kgf/cm ²) | |
|-------|----------------------|------------------------|---------------|--------------|----------------------------|---------------------------------|--|--|--------------|-----------------------|---------------|---|---------|
| | | Round mm | Hexagom mm | Square mm | | | | | | | | | |
| CL-26 | A4 | 4.5 | 3~26 | 4~22 | 4~18 | 17.6(1800) | 37.9(3870) | 8000 | 0.040 | 4.2 | 161E | TK-A533 | 2.4(24) |
| CL-30 | A4 | 4.5 | 3~30 | 4~26 | 4~20 | 19.6(2000) | 42.1(4300) | 8000 | 0.038 | 4.1 | 163E | TK-A533 | 2.7(27) |
| CL-36 | A5 | 6 | 3~36 | 6~32 | 6~26 | 22.5(2300) | 48.5(4950) | 6000 | 0.058 | 6.3 | 171E | TK-C643 | 2.3(23) |
| CL-42 | A5 | 6 | 3~42 | 6~36 | 6~29 | 24.5(2500) | 52.9(5400) | 6000 | 0.057 | 6.1 | 173E | TK-C643 | 2.5(25) |
| CL-42 | A6 | 6 | 3~42 | 6~36 | 6~29 | 24.5(2500) | 52.9(5400) | 6000 | 0.061 | 7.5 | 173E | TK-C643 | 2.5(25) |
| CL-52 | A6 | 6 | 5~52 | 8~45 | 7~36 | 27.4(2800) | 59.0(6020) | 6000 | 0.093 | 13.8 | 177E | TK-A853 | 2.0(20) |
| CL-60 | A6 | 6 | 5~60 | 8~52 | 7~42 | 29.4(3000) | 63.7(6500) | 5000 | 0.091 | 13.5 | 185E | TS-866 | 1.8(18) |
| CL-60 | A8 | 6 | 5~60 | 8~52 | 7~42 | 29.4(3000) | 63.7(6500) | 5000 | 0.104 | 14.5 | 185E | TS-866 | 1.8(18) |
| CL-80 | A8 | 6 | 20~80 | 18~69 | 15~56 | 34.3(3500) | 71.5(7300) | 4000 | 0.120 | 19.8 | 193E | TK-A1287 | 1.6(16) |

DIMENSIONS

| Model | A | A1 | B | D | D1 | E | F max. | F min. | G max. | G min. | H | J | K max. | L | L1 | M | |
|-------|----|-----|-----|-------|-------|--------|--------|--------|--------|--------|------|------|--------|---------|----------|----|---|
| CL-26 | A4 | 110 | 85 | 108 | 82.6 | 63.51 | 25 | 26 | 3 | 9.5 | 5 | 15 | 12 | M40x1.5 | 3~M10x30 | 15 | 4 |
| CL-30 | A4 | 110 | 85 | 108 | 82.6 | 63.51 | 25 | 30 | 3 | 9.5 | 5 | 15 | 12 | M40x1.5 | 3~M10x30 | 15 | 4 |
| CL-36 | A5 | 135 | 100 | 130 | 104.8 | 82.56 | 27 | 36 | 3 | 14 | 8 | 17.5 | 20 | M55x2 | 4~M10x30 | 14 | 4 |
| CL-42 | A5 | 135 | 100 | 130 | 104.8 | 82.56 | 27 | 42 | 3 | 14 | 8 | 17.5 | 20 | M55x2 | 4~M10x30 | 14 | 4 |
| CL-42 | A6 | 165 | 100 | 130 | 133.4 | 106.38 | 32 | 42 | 3 | 15 | 9 | 17.5 | 20 | M60x2 | 4~M12x35 | 16 | 4 |
| CL-52 | A6 | 170 | 130 | 154 | 133.4 | 106.38 | 27 | 52 | 5 | 10.5 | 4.5 | 24 | 45 | M60x2 | 4~M12x35 | 20 | 5 |
| CL-60 | A6 | 170 | 130 | 154 | 133.4 | 106.38 | 27 | 60 | 5 | 10.5 | 4.5 | 24 | 45 | M75x2 | 4~M12x35 | 20 | 5 |
| CL-60 | A8 | 210 | 130 | 147.5 | 171.4 | 139.72 | 35 | 60 | 5 | 3.5 | -2.5 | 24 | 45 | M85x2 | 4~M16x40 | 22 | 5 |
| CL-80 | A8 | 210 | 156 | 175 | 171.4 | 139.72 | 35 | 80 | 20 | 7.5 | 1.5 | 22 | 45 | M100x2 | 6~M16x40 | 22 | 5 |



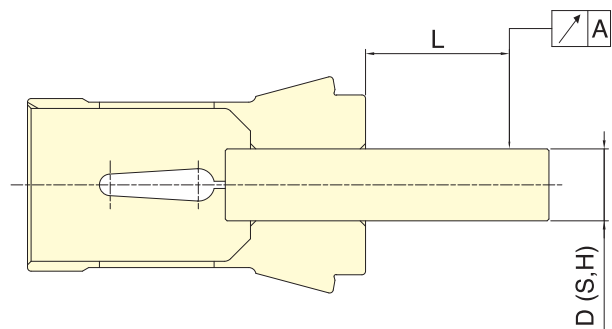
DIN 6343 Collet standard

Subject to technical changes

DIMENSIONS

| Collet | Max. Chucking Capacity (mm) | | | d | D | D1 | L | Matching Collet Chuck |
|-------------|-----------------------------|---------|--------|----|-----|----|-----|------------------------------------|
| | Round | Hexagom | Square | | | | | |
| 161E | 3~26 | 4~22 | 4~18 | 32 | 45 | 34 | 75 | CL-26, CL-26A4 |
| 163E | 3~30 | 4~26 | 4~20 | 35 | 48 | 38 | 80 | CL-30, CL-30A4 |
| 171E | 3~36 | 6~32 | 6~26 | 42 | 55 | 42 | 94 | CL-36, CL-36A5 |
| 173E | 3~42 | 6~36 | 6~29 | 48 | 60 | 50 | 94 | CL-42, CL-42A5, CL-42A6 |
| 177E | 5~52 | 8~45 | 7~36 | 58 | 70 | 60 | 94 | CL-52, CL-52A6 |
| 185E | 5~60 | 8~52 | 7~42 | 66 | 84 | 73 | 110 | CL-6017, CL-6022, CL-60A6, CL-60A8 |
| 193E | 20~80 | 18~69 | 15~56 | 90 | 107 | 92 | 130 | CL-80, CL-80A8 |

| Test Bar D(S,H) | L mm | A DIN | |
|-----------------|------|---------|---------|
| | | Class 1 | Class 2 |
| 0.5~1.0 | 3 | 0.015 | 0.015 |
| 1.0~1.6 | 6 | 0.015 | 0.020 |
| 1.6~3.0 | 10 | 0.015 | 0.020 |
| 3.0~6.0 | 16 | 0.015 | 0.020 |
| 6.0~10.0 | 25 | 0.015 | 0.020 |
| 10.0~18.0 | 40 | 0.020 | 0.030 |
| 18.0~24.0 | 50 | 0.020 | 0.030 |
| 24.0~30.0 | 60 | 0.020 | 0.030 |
| 30.0~50.0 | 80 | 0.030 | 0.040 |
| 50.0~60.0 | 100 | 0.030 | 0.040 |

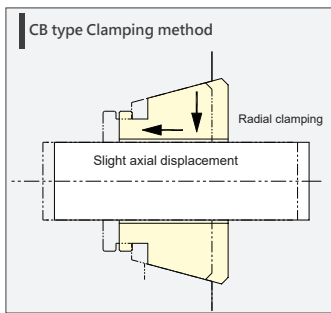


Note: Collets chuck are conformed to DIN 6343 Class2.

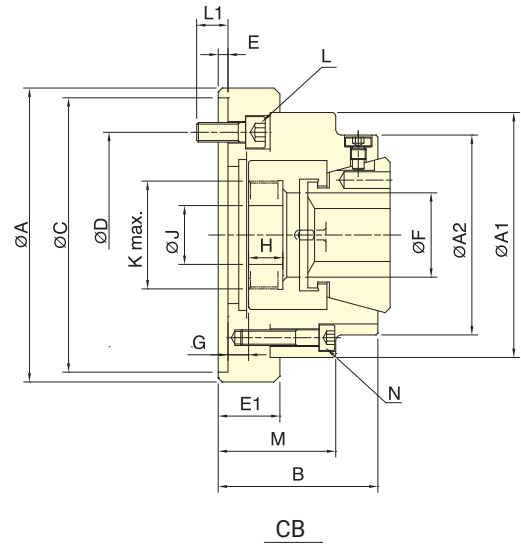
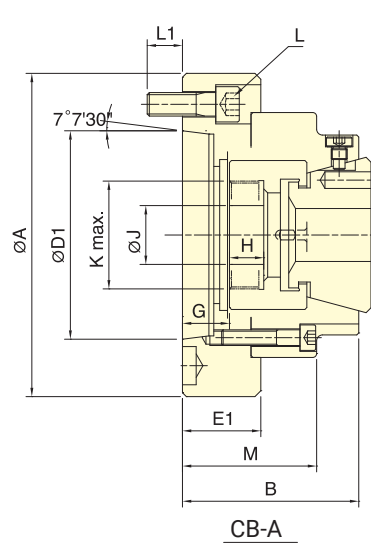


- Suitable for CNC lathes, dedicated machines, or other turning machinery for bar or shaft processing.
- Draw-back clamping with radial clamping and axial fine-tuning torque, featuring through-hole.
- High precision, high speed, and high rigidity structure.
- Comprehensive waterproof design to prevent cutting water from entering the spindle through holes.
- J is the hole diameter of blank draw nut.
K is the maximum thread specification and it could be customize.

COLLET CHUCKS



During clamping, the workpiece shifts slightly backward along with the collet.



Subject to technical changes

SPECIFICATIONS

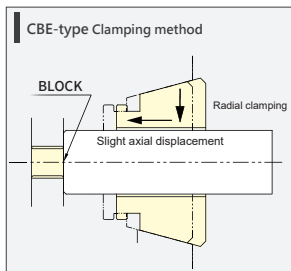
| Model | Plunger stroke | Max. Chucking Capacity | | | Max. D.B. pull | Max. clamping force | Max. speed | Weight | Matching steel collet | Matching Cyl. | Max. pressure |
|----------|----------------|------------------------|---------|--------|----------------|---------------------|----------------------------|--------|-----------------------|---------------|----------------------------|
| | | Round | Hexagom | Square | | | | | | | |
| | mm | mm | mm | mm | kN (kgf) | kN (kgf) | min ⁻¹ (r.p.m.) | kg | | | MPa (kgf/cm ²) |
| CB-42 | 4.5 | 4~42 | 7~36 | 7~30 | 34.3(3500) | 78.4(8000) | 7000 | 6.5 | RG-42 | TK-B846 | 2.8(28) |
| CB-42 A5 | 4.5 | 4~42 | 7~36 | 7~30 | 34.3(3500) | 78.4(8000) | 7000 | 6.2 | RG-42 | TK-B846 | 2.8(28) |
| CB-42 A6 | 4.5 | 4~42 | 7~36 | 7~30 | 34.3(3500) | 78.4(8000) | 7000 | 7.4 | RG-42 | TK-B846 | 2.8(28) |
| CB-52 | 4.5 | 4~52 | 7~36 | 7~45 | 39.2(4000) | 92.1(9400) | 7000 | 6 | RG-52 | TK-A853 | 3.2(32) |
| CB-5217 | 4.5 | 4~52 | 7~36 | 7~45 | 39.2(4000) | 92.1(9400) | 7000 | 9.6 | RG-52 | TK-A853 | 3.2(32) |
| CB-52 A5 | 4.5 | 4~52 | 7~36 | 7~45 | 39.2(4000) | 92.1(9400) | 7000 | 6.5 | RG-52 | TK-A853 | 3.2(32) |
| CB-52 A6 | 4.5 | 4~52 | 7~36 | 7~45 | 39.2(4000) | 92.1(9400) | 7000 | 7.8 | RG-52 | TK-A853 | 3.2(32) |
| CB-65 | 4.5 | 4~65 | 8~56 | 8~46 | 44.1(4500) | 103(10500) | 5500 | 15 | RG-65 | TS-866 | 3.0(30) |
| CB-65 A6 | 4.5 | 4~65 | 8~56 | 8~46 | 44.1(4500) | 103(10500) | 5500 | 13.6 | RG-65 | TS-866 | 3.0(30) |
| CB-65 A8 | 4.5 | 4~65 | 8~56 | 8~46 | 44.1(4500) | 103(10500) | 5500 | 17.6 | RG-65 | TS-866 | 3.0(30) |
| CB-80 | 4.5 | 5~80 | 8~68 | 8~56 | 50.0(5100) | 115(11730) | 5500 | 19 | RG-80 | TK-A1287 | 2.3(23) |
| CB-80 A8 | 4.5 | 5~80 | 8~68 | 8~56 | 50.0(5100) | 115(11730) | 5500 | 19 | RG-80 | TK-A1287 | 2.3(23) |

DIMENSIONS

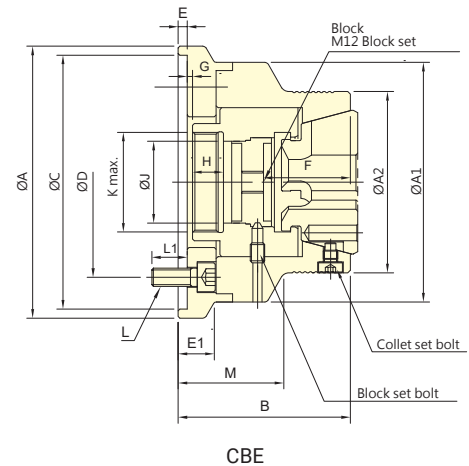
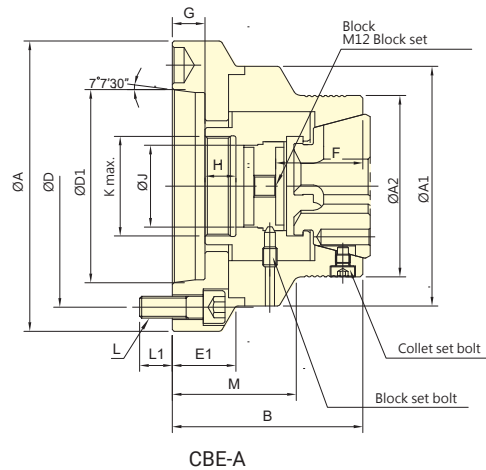
| Model | A | A1 | A2 | B | C(H6) | D | D1 | E | E1 | F | G max. | G min. | H | J | K max. | L | L1 | M | N |
|----------|-----|-----|-----|------|-------|-------|--------|---|------|------|--------|--------|------|----|--------|----------|----|------|-------|
| CB-42 | 150 | 125 | 102 | 81.5 | 140 | 104.8 | - | 5 | 31 | 43 | 10.5 | 6 | 17.5 | 30 | M55x2 | 3~M10x25 | 11 | 60 | 4~M8 |
| CB-42 A5 | 140 | 125 | 102 | 91.5 | - | 104.8 | 82.56 | - | 41.5 | 43 | 25.5 | 21 | 17.5 | 30 | M55x2 | 4~M10x25 | 12 | 70 | 4~M8 |
| CB-42 A6 | 165 | 125 | 102 | 91.5 | - | 133.4 | 106.38 | - | 45 | 43 | 29 | 24.5 | 17.5 | 30 | M55x2 | 4~M12x35 | 18 | 73.5 | 4~M8 |
| CB-52 | 150 | 125 | 102 | 83.5 | 140 | 104.8 | - | 5 | 31.5 | 53 | 11 | 6.5 | 17.5 | 30 | M60x2 | 4~M10x25 | 16 | 62.5 | 4~M8 |
| CB-5217 | 180 | 125 | 102 | 87 | 170 | 133.4 | - | 5 | 35 | 53 | 14.5 | 10 | 17.5 | 30 | M60x2 | 4~M12x30 | 18 | 66 | 4~M8 |
| CB-52 A5 | 140 | 125 | 102 | 93.5 | - | 104.8 | 82.56 | - | 41.5 | 53 | 26 | 21.5 | 17.5 | 30 | M60x2 | 4~M10x30 | 16 | 72.5 | 4~M8 |
| CB-52 A6 | 165 | 125 | 102 | 99 | - | 133.4 | 106.38 | - | 47 | 53 | 31.5 | 27 | 17.5 | 30 | M60x2 | 6~M12x35 | 18 | 78 | 4~M8 |
| CB-65 | 185 | 145 | 120 | 100 | 170 | 133.4 | - | 6 | 50 | 66 | 13.5 | 9 | 21.5 | 32 | M75x2 | 6~M12x40 | 20 | 73.5 | 4~M8 |
| CB-65 A6 | 165 | 145 | 120 | 111 | - | 133.4 | 106.38 | - | 61 | 66 | 30.5 | 26 | 21.5 | 32 | M75x2 | 4~M12x40 | 20 | 84.5 | 4~M8 |
| CB-65 A8 | 207 | 145 | 120 | 107 | - | 171.4 | 139.72 | - | 57 | 66 | 26.5 | 22 | 21.5 | 32 | M75x2 | 4~M16x40 | 24 | 80.5 | 4~M8 |
| CB-80 | 235 | 175 | 150 | 112 | 220 | 171.4 | - | 5 | 37 | 82.5 | 13.5 | 8 | 25 | 45 | M85x2 | 6~M16x30 | 22 | 87 | 6~M10 |
| CB-80 A8 | 210 | 175 | 150 | 125 | - | 171.4 | 139.72 | - | 50 | 82.5 | 26.5 | 21 | 25 | 45 | M85x2 | 6~M16x50 | 24 | 100 | 6~M10 |



- The pull-back positioning clamping, combined with the workpiece stop block mechanism, features radial clamping and axial fine-tuning torque, enabling precise positioning of the workpiece feeding length for enhanced length accuracy control.
- The material stopper and dust cover can be interchanged for combined use, providing chip prevention functionality.
- J is the hole diameter of blank draw nut.
K is the maximum thread specification and it could be customize.



With the material stop mechanism in place, the workpiece does not shift backward during clamping, although there may be slight scuff marks on the surface.



Subject to technical changes

SPECIFICATIONS

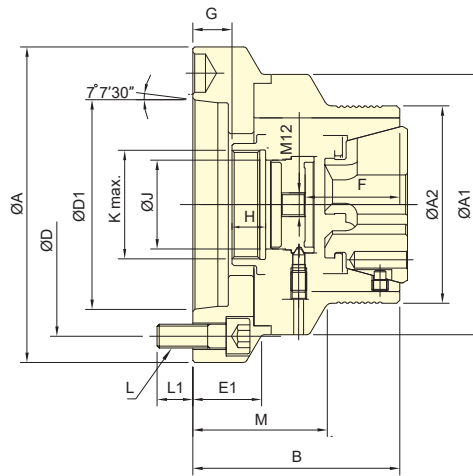
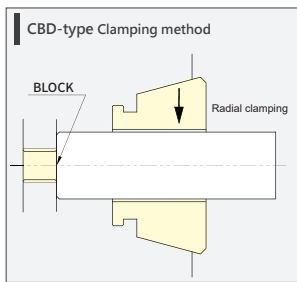
| Model | Plunger stroke mm | Max. Chucking Capacity | | | Max. D.B. pull kN (kgf) | Max. clamping force kN (kgf) | Max. speed min ⁻¹ (r.p.m.) | Weight kg | Matching steel collet | Matching Cyl. | Max. pressure MPa (kgf/cm ²) |
|-----------|----------------------|------------------------|---------------|--------------|----------------------------|---------------------------------|--|--------------|-----------------------|---------------|---|
| | | Round mm | Hexagom mm | Square mm | | | | | | | |
| CBE-42 | 4.5 | 4~42 | 7~36 | 7~30 | 34.3(3500) | 78.4(8000) | 7000 | 6 | RG-42 | TK-B846 | 2.8(28) |
| CBE-4212 | 4.5 | 4~42 | 7~36 | 7~30 | 34.3(3500) | 78.4(8000) | 7000 | 6 | RG-42 | TK-B846 | 2.8(28) |
| CBE-42 A5 | 4.5 | 4~42 | 7~36 | 7~30 | 34.3(3500) | 78.4(8000) | 7000 | 6.3 | RG-42 | TK-B846 | 2.8(28) |
| CBE-42 A6 | 4.5 | 4~42 | 7~36 | 7~30 | 34.3(3500) | 78.4(8000) | 7000 | 7.4 | RG-42 | TK-B846 | 2.8(28) |
| CBE-52 | 4.5 | 4~52 | 7~36 | 7~30 | 39.2(4000) | 92.1(9400) | 7000 | 6.9 | RG-52 | TK-A853 | 3.2(32) |
| CBE-5212 | 4.5 | 4~52 | 7~36 | 7~30 | 39.2(4000) | 92.1(9400) | 7000 | 6.7 | RG-52 | TK-A853 | 3.2(32) |
| CBE-5217 | 4.5 | 4~52 | 7~36 | 7~30 | 39.2(4000) | 92.1(9400) | 7000 | 8.9 | RG-52 | TK-A853 | 3.2(32) |
| CBE-52 A5 | 4.5 | 4~52 | 7~36 | 7~30 | 39.2(4000) | 92.1(9400) | 7000 | 7.8 | RG-52 | TK-A853 | 3.2(32) |
| CBE-52 A6 | 4.5 | 4~52 | 7~36 | 7~30 | 39.2(4000) | 92.1(9400) | 7000 | 8.3 | RG-52 | TK-A853 | 3.2(32) |
| CBE-65 | 4.5 | 4~65 | 8~56 | 8~46 | 44.1(4500) | 103(10500) | 6000 | 8.6 | RG-65 | TS-866 | 3.0(30) |
| CBE-6514 | 4.5 | 4~65 | 8~56 | 8~46 | 44.1(4500) | 103(10500) | 6000 | 9.3 | RG-65 | TS-866 | 3.0(30) |
| CBE-65 A5 | 4.5 | 4~65 | 8~56 | 8~46 | 44.1(4500) | 103(10500) | 6000 | 10.8 | RG-65 | TS-866 | 3.0(30) |
| CBE-65 A6 | 4.5 | 4~65 | 8~56 | 8~46 | 44.1(4500) | 103(10500) | 6000 | 9.5 | RG-65 | TS-866 | 3.0(30) |
| CBE-65 A8 | 4.5 | 4~65 | 8~56 | 8~46 | 44.1(4500) | 103(10500) | 6000 | 9.5 | RG-65 | TS-866 | 3.0(30) |

DIMENSIONS

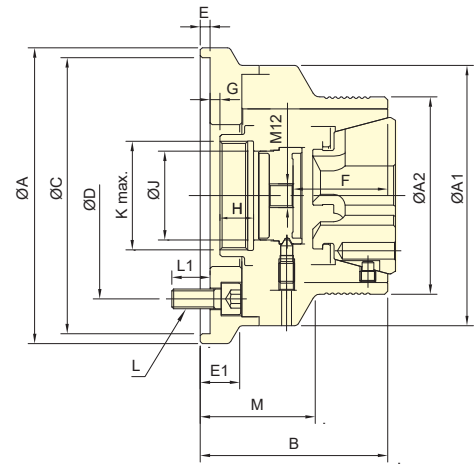
| Model | A | A1 | A2 | B | C (H6) | D | D1 | E | E1 | F | G max. | G min. | H | J | K max. | L | L1 | M |
|-----------|-----|-----|-----|-----|--------|-------|--------|---|----|----|--------|--------|------|----|--------|----------|------|----|
| CBE-42 | 150 | 132 | 100 | 95 | 140 | 104.8 | - | 5 | 20 | 48 | 5.5 | 1 | 17 | 45 | M55x2 | 4~M10x25 | 19.5 | 58 |
| CBE-4212 | 132 | 132 | 100 | 95 | 120 | 100 | - | 5 | - | 48 | 5.5 | 1 | 17 | 45 | M55x2 | 4~M10x25 | 19.5 | 58 |
| CBE-42 A5 | 132 | 132 | 100 | 105 | - | 104.8 | 82.56 | - | - | 48 | 20.5 | 16 | 17 | 45 | M55x2 | 4~M10x30 | 16 | 68 |
| CBE-42 A6 | 160 | 132 | 100 | 105 | - | 133.4 | 106.38 | - | 35 | 48 | 20.5 | 16 | 17 | 45 | M55x2 | 4~M12x35 | 18 | 68 |
| CBE-52 | 150 | 140 | 107 | 99 | 140 | 104.8 | - | 5 | - | 52 | 5.5 | 1 | 17 | 56 | M60x2 | 4~M10x20 | 14.5 | 60 |
| CBE-5212 | 140 | 140 | 107 | 99 | 120 | 100 | - | 5 | - | 52 | 5.5 | 1 | 17 | 56 | M60x2 | 4~M10x20 | 14.5 | 60 |
| CBE-5217 | 180 | 140 | 107 | 109 | 170 | 133.4 | - | 6 | - | 52 | 14.5 | 10 | 17 | 56 | M60x2 | 4~M12x30 | 18 | 70 |
| CBE-52 A5 | 140 | 140 | 107 | 109 | - | 104.8 | 82.56 | - | - | 52 | 20.5 | 16 | 17 | 56 | M60x2 | 4~M10x30 | 16 | 70 |
| CBE-52 A6 | 160 | 140 | 107 | 109 | - | 133.4 | 106.37 | - | - | 52 | 20.5 | 16 | 17 | 56 | M60x2 | 4~M12x35 | 18 | 70 |
| CBE-65 | 180 | 157 | 122 | 114 | 170 | 133.4 | - | 6 | 24 | 56 | 15 | 10.5 | 17.5 | 68 | M75x2 | 4~M12x30 | 18 | 72 |
| CBE-6514 | 157 | 157 | 122 | 116 | 140 | 104.8 | - | 6 | - | 56 | 17 | 12.5 | 17.5 | 68 | M75x2 | 4~M10x30 | 18 | 74 |
| CBE-65 A5 | 157 | 157 | 122 | 114 | - | 104.8 | 82.56 | - | - | 56 | 21 | 16.5 | 17.5 | 68 | M75x2 | 4~M10x25 | 16 | 72 |
| CBE-65 A6 | 157 | 157 | 122 | 112 | - | 133.4 | 106.38 | - | - | 56 | 19 | 14.5 | 17.5 | 68 | M75x2 | 4~M12x35 | 18.5 | 70 |
| CBE-65 A8 | 202 | 157 | 122 | 116 | - | 171.4 | 139.72 | - | 38 | 56 | 23 | 18.5 | 17.5 | 68 | M75x2 | 4~M16x35 | 24 | 74 |



- The push-forward clamping, combined with a stop block mechanism, features radial clamping with zero radial displacement, enabling precise positioning of the workpiece feeding length for improved length accuracy control.
- Combined with AUTOGRIP rubber collets, it prevents the typical forward pushing of elastic collets, preserving the integrity of the workpiece surface.
- The material stopper and dust cover can be interchanged for combined use, balancing through-hole applications and chip prevention functionality, suitable for sub-spindle clamping to reduce clamping pressure effects.
- J is the hole diameter of blank draw nut.
K is the maximum thread specification and it could be customize.



CBD-A



CBD

Subject to technical changes

SPECIFICATIONS

| Model | Plunger stroke mm | Max. Chucking Capacity | | | Max. D.B. pull kN (kgf) | Max. clamping force kN (kgf) | Max. speed min ⁻¹ (r.p.m.) | Weight kg | Matching steel collet | Matching Cyl. | Max. pressure MPa (kgf/cm ²) |
|---------------------------|----------------------|------------------------|---------------|--------------|----------------------------|---------------------------------|--|--------------|-----------------------|---------------|---|
| | | Round mm | Hexagom mm | Square mm | | | | | | | |
| CBD-52 | 4.5 | 4~52 | 7~36 | 7~45 | 39.2(4000) | 92.1(9400) | 7000 | 7.3 | RG-52 | TK-A853 | 3.0(30) |
| CBD-5212 | 4.5 | 4~52 | 7~36 | 7~45 | 39.2(4000) | 92.1(9400) | 7000 | 7.1 | RG-52 | TK-A853 | 3.0(30) |
| CBD-5217 | 4.5 | 4~52 | 7~36 | 7~45 | 39.2(4000) | 92.1(9400) | 7000 | 10.9 | RG-52 | TK-A853 | 3.0(30) |
| CBD-52 A5 | 4.5 | 4~52 | 7~36 | 7~45 | 39.2(4000) | 92.1(9400) | 7000 | 7.8 | RG-52 | TK-A853 | 3.0(30) |
| CBD-52 A6 | 4.5 | 4~52 | 7~36 | 7~45 | 39.2(4000) | 92.1(9400) | 7000 | 9.1 | RG-52 | TK-A853 | 3.0(30) |
| CBD-65 | 4.5 | 4~65 | 8~56 | 8~46 | 44.1(4500) | 103(10500) | 6000 | 8.6 | RG-65 | TS-866 | 2.7(27) |
| CBD-6514 | 4.5 | 4~65 | 8~56 | 8~46 | 44.1(4500) | 103(10500) | 6000 | 9.3 | RG-65 | TS-866 | 2.7(27) |
| CBD-65 A5 | 4.5 | 4~65 | 8~56 | 8~46 | 44.1(4500) | 103(10500) | 6000 | 10.8 | RG-65 | TS-866 | 2.7(27) |
| CBD-65 A6 | 4.5 | 4~65 | 8~56 | 8~46 | 44.1(4500) | 103(10500) | 6000 | 9.5 | RG-65 | TS-866 | 2.7(27) |
| CBD-65 A8 | 4.5 | 4~65 | 8~56 | 8~46 | 44.1(4500) | 103(10500) | 6000 | 9.5 | RG-65 | TS-866 | 2.7(27) |

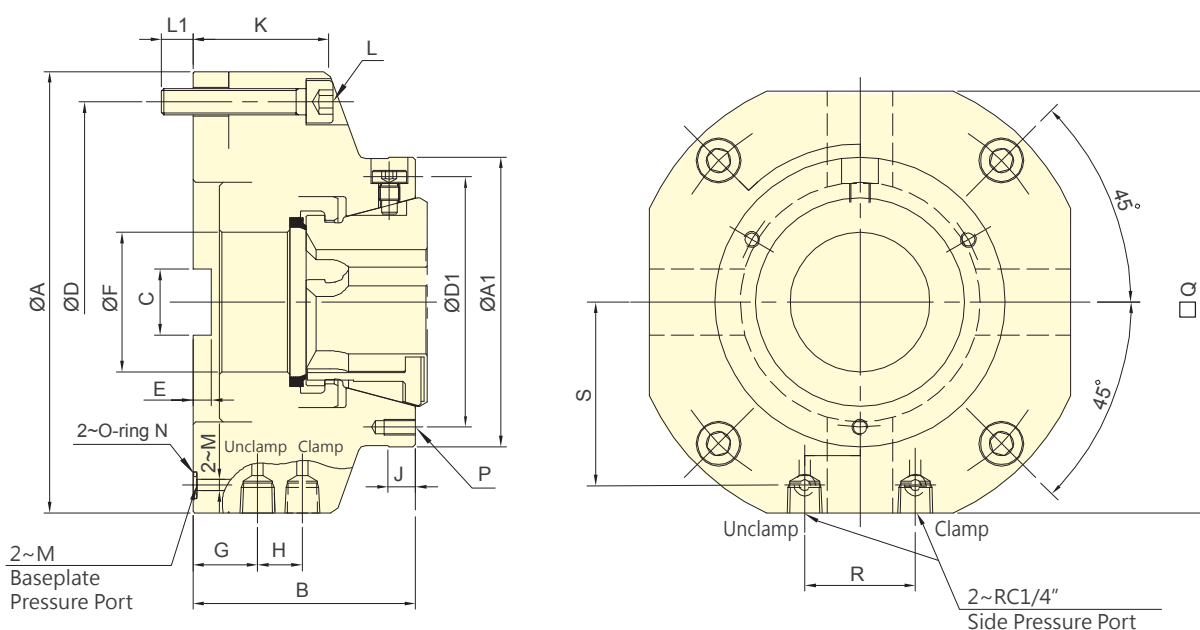
DIMENSIONS

| Model | A | A1 | A2 | B | C (H6) | D | D1 | E | E1 | F | G max. | G min. | H | J | K max. | L | L1 | M |
|---------------------------|-----|-----|-----|-----|--------|-------|--------|---|----|----|--------|--------|------|----|--------|----------|------|----|
| CBD-52 | 150 | 140 | 116 | 99 | 140 | 104.8 | - | 5 | - | 52 | 7 | 2.5 | 17 | 56 | M60x2 | 4~M10x20 | 14.5 | 57 |
| CBD-5212 | 140 | 140 | 116 | 99 | 120 | 100 | - | 5 | - | 52 | 7 | 2.5 | 17 | 56 | M60x2 | 4~M10x20 | 14.5 | 57 |
| CBD-5217 | 180 | 140 | 116 | 109 | 170 | 133.4 | - | 6 | - | 52 | 16 | 11.5 | 17 | 56 | M60x2 | 4~M12x30 | 18 | 67 |
| CBD-52 A5 | 140 | 140 | 116 | 109 | - | 104.8 | 82.56 | - | - | 52 | 22 | 17.5 | 17 | 56 | M60x2 | 4~M10x30 | 16 | 67 |
| CBD-52 A6 | 160 | 140 | 116 | 109 | - | 133.4 | 106.38 | - | - | 52 | 22 | 17.5 | 17 | 56 | M60x2 | 4~M12x35 | 18 | 67 |
| CBD-65 | 180 | 157 | 132 | 112 | 170 | 133.4 | - | 6 | 24 | 54 | 15.5 | 11 | 17.5 | 68 | M75x2 | 4~M12x30 | 18 | 70 |
| CBD-6514 | 157 | 157 | 132 | 114 | 140 | 104.8 | - | 6 | - | 54 | 17.5 | 13 | 17.5 | 68 | M75x2 | 4~M10x30 | 18 | 72 |
| CBD-65 A5 | 157 | 157 | 132 | 112 | - | 104.8 | 82.56 | - | - | 54 | 21.5 | 17 | 17.5 | 68 | M75x2 | 4~M10x25 | 16 | 70 |
| CBD-65 A6 | 157 | 157 | 132 | 110 | - | 133.4 | 106.38 | - | - | 54 | 19.5 | 15 | 17.5 | 68 | M75x2 | 4~M12x35 | 18.5 | 68 |
| CBD-65 A8 | 202 | 157 | 132 | 114 | - | 171.4 | 139.72 | - | 38 | 54 | 23.5 | 19 | 17.5 | 68 | M75x2 | 4~M16x35 | 24 | 72 |



- Build-in cylinder, ideal for drilling machines, milling machines and machining centers
- Work with AUTOGRIP's rubber collet(RG series), quick change and saving runtime.
- Two modes for the media supply: side-supply mode or baseplate-supply mode.

COLLET CHUCKS



Subject to technical changes

SPECIFICATIONS

| Model | Jaw stroke (Dia.) mm | Max. Chucking Capacity | | | Max. clamping force Pneumatic kN (kgf) | Max. clamping force Hydraulic kN (kgf) | Max. pressure Pneumatic MPa (kgf/cm ²) | Max. pressure Hydraulic MPa (kgf/cm ²) | Weight kg | Matching steel collet |
|---------------|-------------------------|------------------------|---------------|--------------|--|--|--|--|--------------|--------------------------|
| | | Round mm | Hexagom mm | Square mm | | | | | | |
| SCB-52 | ± 0.5 | 4~52 | 7~45 | 7~36 | 8.2(837) | 101(10300) | 0.6(6) | 4.0(40) | 8.6 | RG-52 |
| SCB-65 | ± 0.5 | 4~65 | 8~56 | 8~46 | 10(1020) | 105(10700) | 0.6(6) | 4.2(42) | 10.2 | RG-65 |

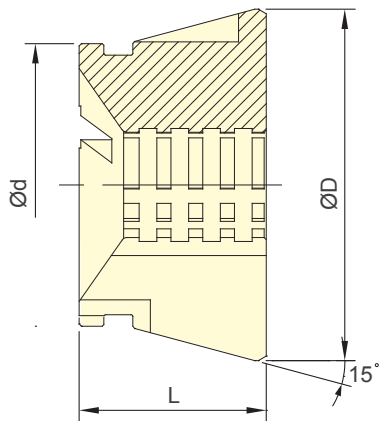
DIMENSIONS

| Model | A (g6) | A1 | B | C | D | D1 | E | F | G | H |
|---------------|--------|-----|------|----|-----|-----|---|----|------|----|
| SCB-52 | 175 | 110 | 84.5 | 25 | 152 | 95 | 7 | 53 | 24.5 | 17 |
| SCB-65 | 192 | 130 | 94 | 30 | 169 | 114 | 9 | 66 | 26.5 | 20 |

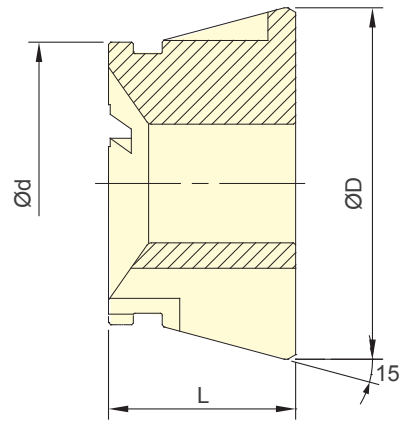
| Model | J | K | L | L1 | M | N | P | Q | R | S |
|---------------|----|------|-------|------|-----|----|---------|-----|----|------|
| SCB-52 | 10 | 51.5 | 4~M10 | 12 | 4.2 | P7 | 3~M6x12 | 160 | 42 | 69.5 |
| SCB-65 | 10 | 61.5 | 4~M10 | 12.5 | 4.2 | P7 | 3~M6x12 | 175 | 50 | 77 |



- Rubber grip collet for push type or draw type collet chucks.
- Full gripping area: high rigidity, more gripping force.
Gripping smoothly: prevent to damage the workpiece.
- More accurate than standard spring collets.
Accuracy: With customized rubber grip collet.
- Grip Range: $\pm 0.5\text{mm}$.
- Quick change and easy.
- Dust-proof and swarf-proof design.



RG-RT

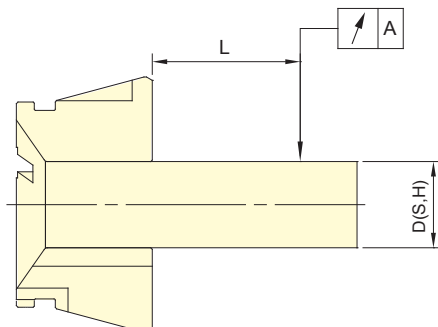


RG-R

Subject to technical changes

SPECIFICATIONS

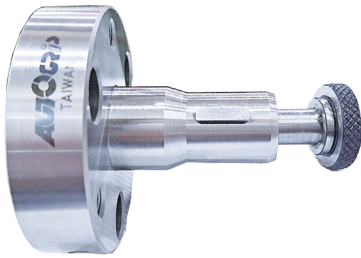
| Model | Max. Chucking Capacity | d | D | L | Matching Collect Chuck |
|---------|------------------------|----|------|----|-------------------------------|
| | Round mm | | | | |
| RG-42R | 4~42 | 54 | 79.3 | 42 | CB-42, CBE-42 |
| RG-42RT | 11~42 | 54 | 79.3 | 42 | CB-42, CBE-42 |
| RG-52R | 4~52 | 66 | 79.3 | 46 | CB-52, CBD-52, CBE-52, SCB-52 |
| RG-52RT | 11~52 | 66 | 79.3 | 46 | CB-52, CBD-52, CBE-52, SCB-52 |
| RG-65R | 4~65 | 80 | 99.5 | 53 | CB-65, CBD-65, CBE-65, SCB-65 |
| RG-65RT | 11~65 | 80 | 99.5 | 53 | CB-65, CBD-65, CBE-65, SCB-65 |



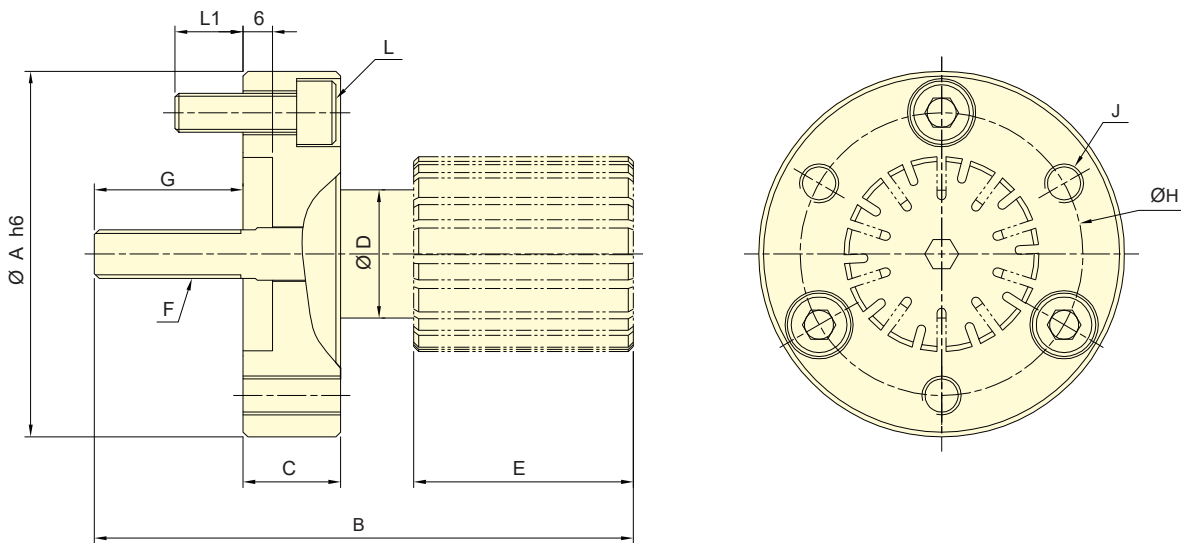
| Test Bar D(S,H) | L | A DIN | |
|-----------------|-----|--------|--------|
| | mm | Class1 | Class2 |
| 3.0~6.0 | 16 | 0.015 | 0.020 |
| 6.0~10.0 | 25 | 0.015 | 0.020 |
| 10.0~18.0 | 40 | 0.020 | 0.030 |
| 18.0~24.0 | 50 | 0.020 | 0.030 |
| 24.0~30.0 | 60 | 0.020 | 0.030 |
| 30.0~50.0 | 80 | 0.030 | 0.040 |
| 50.0~60.0 | 100 | 0.030 | 0.040 |

Note1 : Collets chuck are conformed to DIN 6343 Class2.

Note2 : AUTOGRIP's rubber grip collets are conformed to DIN 6343 Class1.



- The pull-back expanding collet chuck is suitable for CNC lathes, special-purpose machines, or other turning machinery.
- Designed for I.D. clamping of workpieces, ensuring stable clamping at high speeds.
- Integrated dual-cone design, stable clamping.
- Countersunk hole design, suitable for blind holes.
- All sliding surfaces are hardened and precision-ground.
- High precision, high speed, and rigid structure
- Compatible with elastic collets (ECP type).
- Internal clamping diameter travel is 0.6mm.
- Clamping accuracy is 0.015mm.



Subject to technical changes

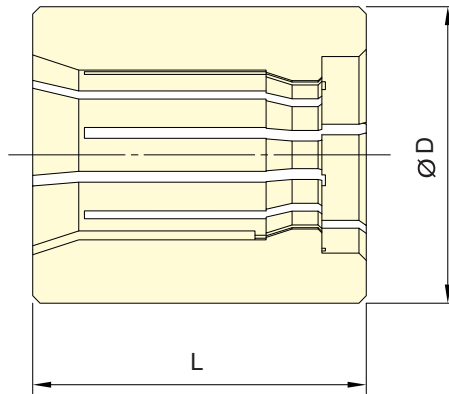
SPECIFICATIONS

| Model | Plunger stroke | Max. Chucking Capacity Round | Max. D.B. pull | Max. speed | Weight | Matching steel collet | Matching Cyl. | Max. pressure |
|--------|----------------|------------------------------|----------------|------------|--------|-----------------------|---------------|---------------|
| | mm | | | | | | | mm |
| CEP-40 | 2 | 40~51 | 17.7(1800) | 5000 | 1.0 | ECP | RK-100 | 2.5(25.7) |

DIMENSIONS

| Model | A(h6) | B | C | D | E | F | G | H | J | L | L1 |
|--------|-------|-------|----|------|----|---------|------|----|------|---------|----|
| CEP-40 | 75 | 110.5 | 20 | 26.3 | 45 | M10x1.5 | 30.5 | 58 | 3~M8 | 3~M8x25 | 14 |

- Designed for Expanding Collet Chuck.



Subject to technical changes

SPECIFICATIONS

| Grip Collet Model | Max. Chucking Capacity (mm) | | D | L | Matching Collet Chuck |
|-------------------|-----------------------------|--|----|----|-----------------------|
| | Round | | | | |
| ECP540 | 40~40.6 | | 40 | 45 | CEP-40 |
| ECP541 | 41~41.6 | | 41 | 45 | CEP-40 |
| ECP542 | 42~42.6 | | 42 | 45 | CEP-40 |
| ECP543 | 43~43.6 | | 43 | 45 | CEP-40 |
| ECP544 | 44~44.6 | | 44 | 45 | CEP-40 |
| ECP545 | 45~45.6 | | 45 | 45 | CEP-40 |
| ECP546 | 46~46.6 | | 46 | 45 | CEP-40 |
| ECP547 | 47~47.6 | | 47 | 45 | CEP-40 |
| ECP548 | 48~48.6 | | 48 | 45 | CEP-40 |
| ECP549 | 49~49.6 | | 49 | 45 | CEP-40 |
| ECP550 | 50~50.6 | | 50 | 45 | CEP-40 |
| ECP551 | 51~51.6 | | 51 | 45 | CEP-40 |
| EC554 | 54~54.9 | | 54 | 50 | CEP-40 |
| EC555 | 55~55.9 | | 55 | 50 | CEP-40 |

